



Wardrobe Module

for designing, editing and valuation
of wardrobes and bookshelves



Wardrobe Module

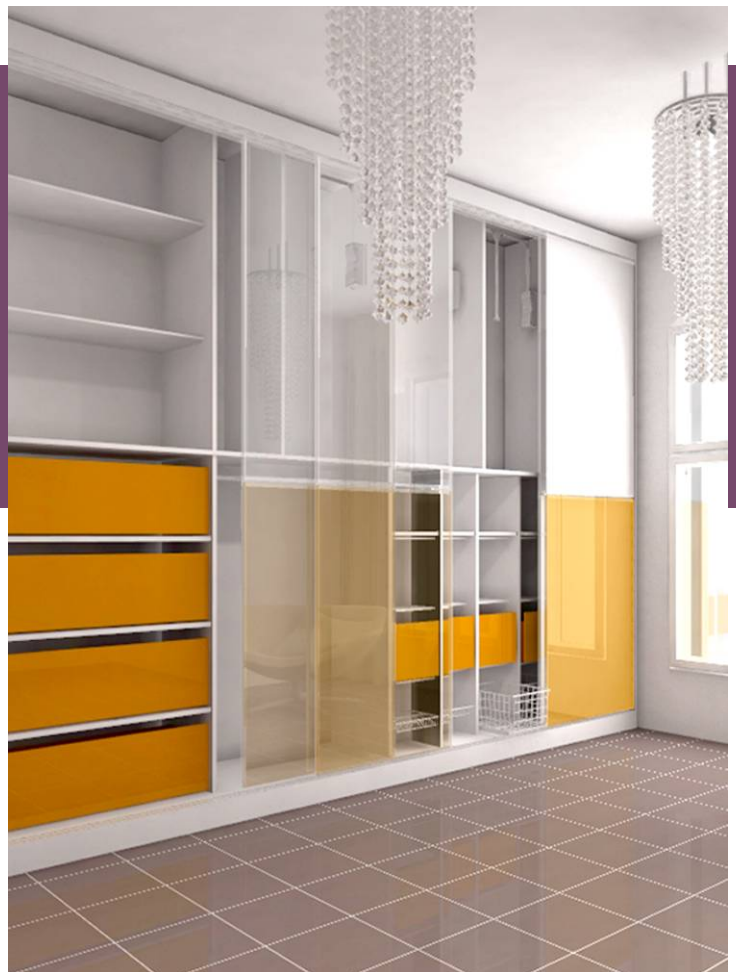
for programs: CAD Decor PRO, CAD Kitchens and CAD Decor

- Features that distinguish of our new tool from others are: parallel operations in 2D and 3D parametric method of designing and dynamic 3D modeling, intelligent automated solutions enhancing your work, detailed documentation and highest quality visualization and preview of designed wardrobe.

- Wardrobe Module is an innovative and universal application for designing, visualization and valuation of any wardrobes, with automated technical documentation and interactive preview.

- When we worked on its final form, we listened to suggestions and comments of our software users. As a result we can offer you a product fulfilling even the most demanding expectations of interior designers. The most professional programming solutions helped to shorten the designing time and enhance the effectiveness and ergonomics of your work.

- This new tool was created mainly for architects and interior designers, as well as for individual furniture plants, producing atypical custom-made wardrobes and closets.



- It is also directed to manufacturers of wardrobe components, equipment and accessories. Currently you work with the module is based on the universal database, and in the future you will be able to use producer databases.



What makes our module special?

- versatile and easy to use, enables designing, valuation and visualization of various wardrobes walk-in closets, storages and bookshelves
- thanks to dynamic 3D modeling you can move wardrobe components using the mouse, and all details and equipment will automatically adjust to space available in particular cells
- at any moment you can quickly and fluently make changes in wardrobe construction, maintaining the proportional location of elements
- full freedom of creation using defined sets of elements: standard modules from universal database and your own modules, tailored to the individual needs of your clients
- advanced designing sliding doors with custom divisions: straight, arc, repeatedly curved (waves), located on a single door leaf or on the entire wardrobe front; you can also copy, slide and edit single door leaves
- textures (furniture boards, wood, mirror, glass, rattan, bamboo and your own graphics loaded from JPG files) are applied by using the 'drag-and-drop' method, and can be easily exported the our programs together with wardrobe project
- detailed graphic presentation of wardrobe components using special illustrations and possibility of creating an 'exploded' image of the project, showing separate parts and elements
- unique option of adding notes to each component directly in the 2D or 3D preview, with display/hide option
- a system of automatic error reporting: information about construction problems, warnings on exceeding permitted dimensions, a list of elements needed to be corrected with option of indication in the project
- a possibility of creating an illuminated ceiling of editable height, with halogens which will emit real light in the visualization environment of CAD Decor, CAD Kitchens and CAD Decor PRO



➤ Valuation, documentation, reports

Interactive modules of valuation and documentation generation are vital for a proper completion of an order. You can obtain 3 types of reports – standard for a client, detailed for a client and a report for a factory, with automatically generated drawings of wardrobe components. These component formats can be easily exported to CSV file, which is read by other application offered by us – CAD Cut. Thanks to that you can obtain fully optimized cutting patterns on your own material sheets!

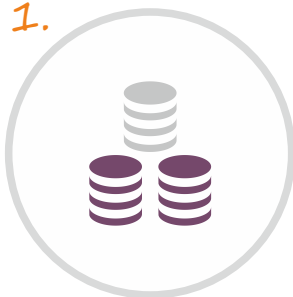
- Cooperation between the Wardrobe Module and CAD Cut is an ideal solution especially for small independent manufacturers of unique furniture, who can conduct all the works with our software – beginning with the conceptual project, through adjustment of construction details, equipping and finishing, up to the production process.



Design your own wardrobe

in a few simple steps

1.



Select database and use our first steps wizard

2.



Define dimensions and construction of the recess

3.



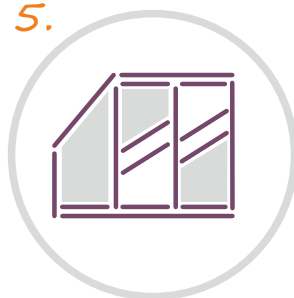
Select elements and components of wardrobe

4.



Add doors, set the number of door leaves and divisions

5.



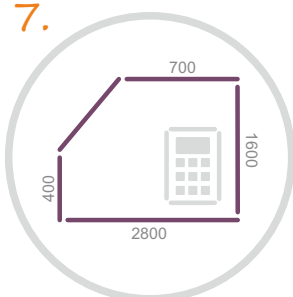
Select materials for doors and wardrobe interior

6.



Add partitions, shelves, rods drawers and equipment

7.



Use additional functions add dimensions and notes

8.



Generate documentation, valuation and cut patterns

9.



Create impressive visualization of wardrobe in our programs



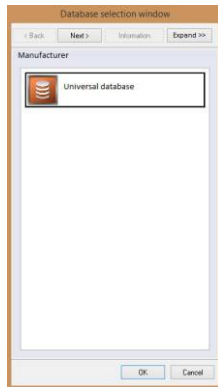
1.

Select database
and use our wizard



Basic Options Wizard

- created to maximally enhance and speed your work
- quickly and intuitively directs you through basic stages of designing wardrobes
- any moment you can close it and work in your own manner
- the following steps in the Basic Options Wizard:

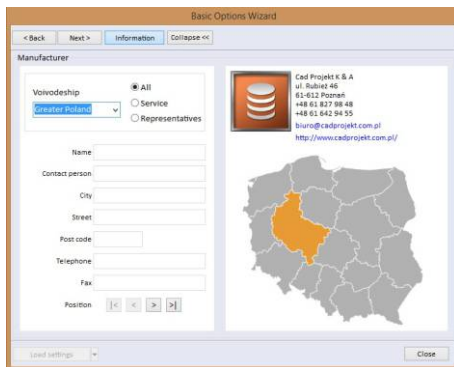
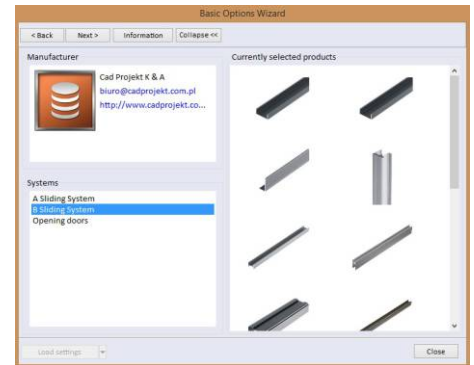


1. Database selection

you choose of the database, on the basis of which the wardrobe project will be created

2. System selection

you choose the system amongst the ones available in the database

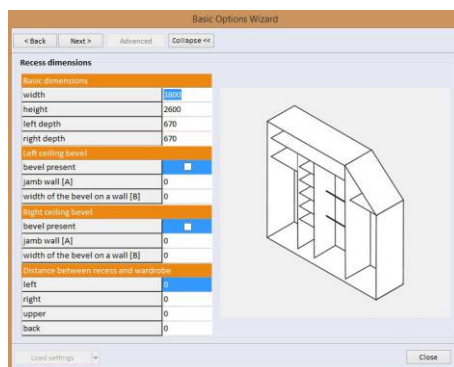
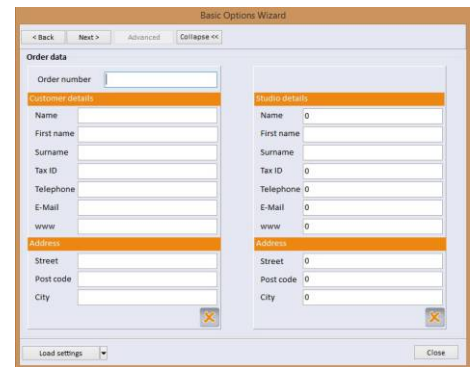


3. Information

you can check the availability of manufacturer's representatives and service points in particular regions in Poland

4. Order data

you can enter the client data and information about your project studio which are to be displayed in the reports

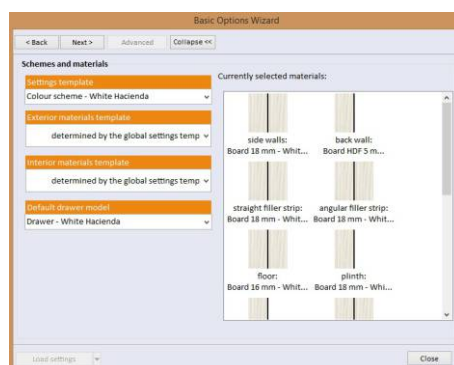
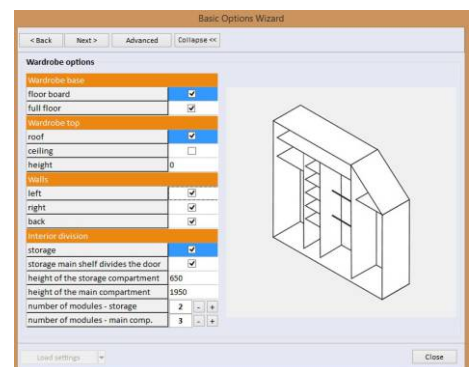


5. Recess dimensions

setting basic dimensions of the recess, adding bevels, defining offsets and distances

6. Wardrobe options

deciding about the presence of a floor, ceiling and walls, defining divisions of the wardrobe e.g. to the main and storage sections

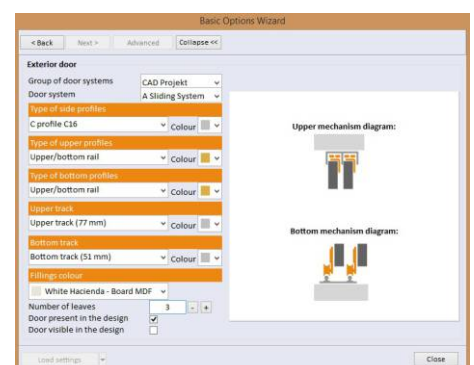


7. Schemes and materials

defining materials and colours for interior and exterior parts of the wardrobe, using previously prepared schemes and templates

8. Exterior door

setting the basic options of the wardrobe door





2.

Define recess dimensions
and parameters



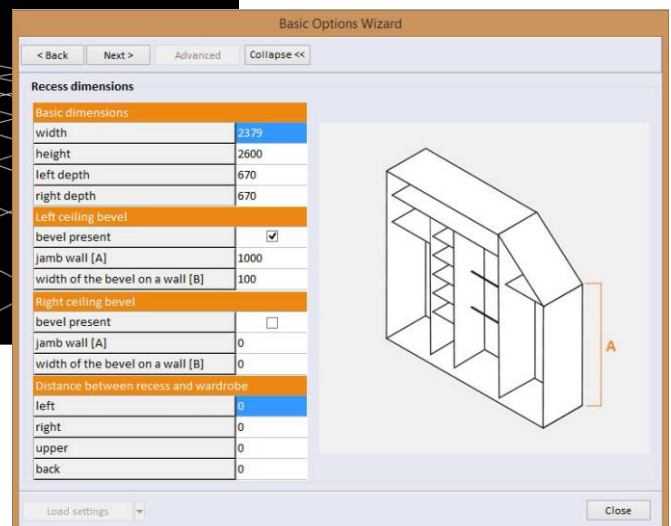
Define recess dimensions

- The module automatically adjusts the shape of the wardrobe to the parameters of walls in CAD Decor PRO, CAD Decor and CAD Kitchens, with the default depth of 670 mm, taking into account also wall bevels in the room.
- You can change the shape of the wardrobe in the Basic Options Creator, as well as in the 'Recess' tab in the side function panel.



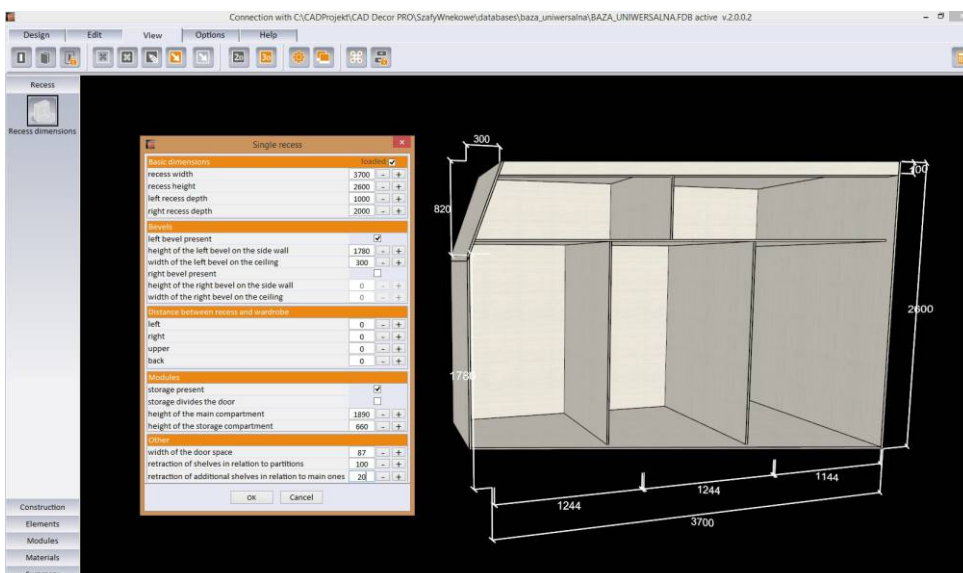
➤ Change recess dimensions in the Wizard

- options of changing the basic dimensions, setting the presence of ceiling bevels and offsets between the recess and the wardrobe
- the currently edited element is marked on the preview



➤ Recess edition in the 'Recess' tab

obeside the basic dimensions you can set parameters of bevels, distances, storage space, the width of the door space and refraction of shelves in relation to partitions



➤ Modified recess dimensions

here you can see a recess with a bevel and sides of various depth



3.

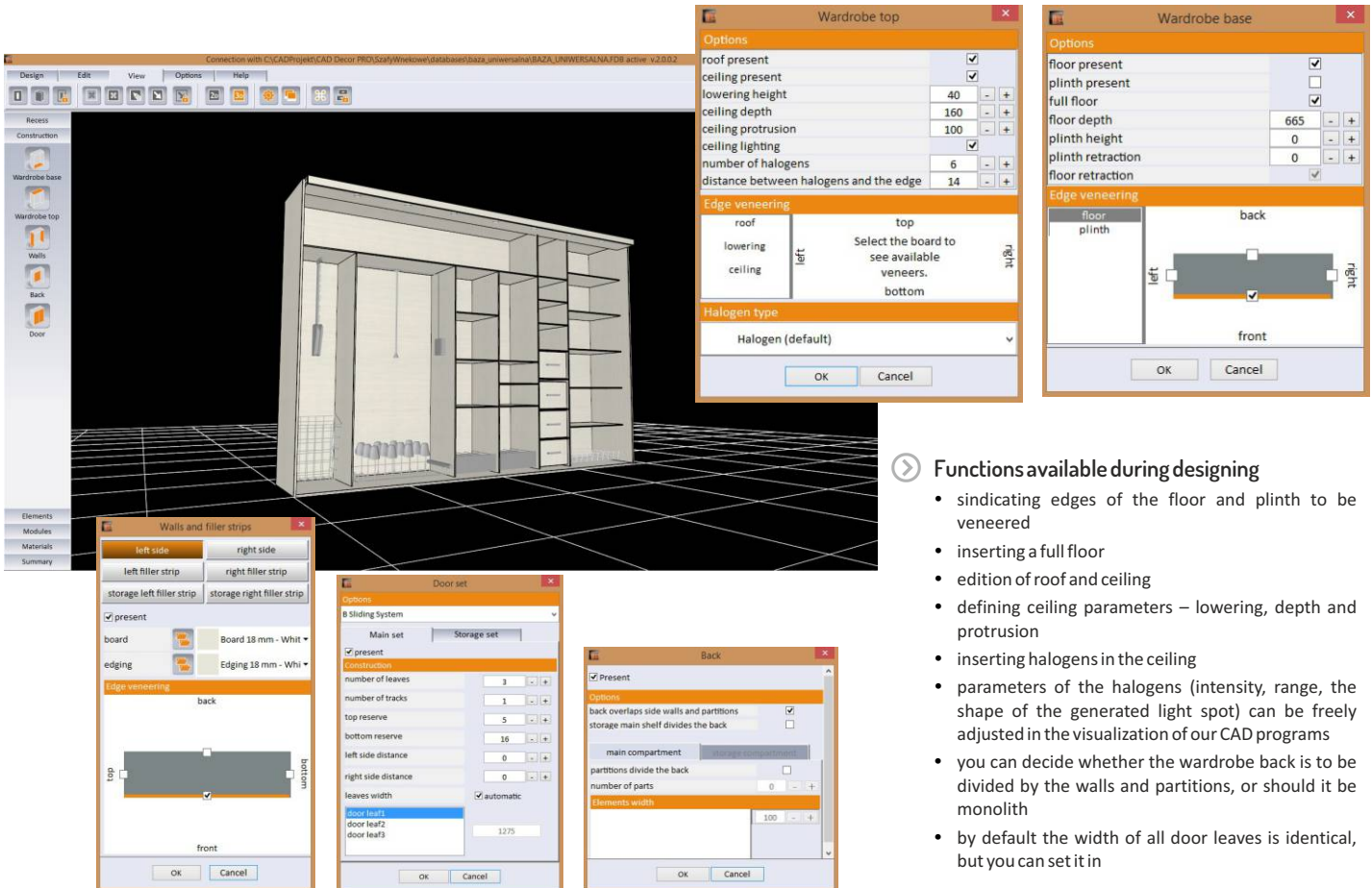
Select wardrobe components



Select wardrobe components

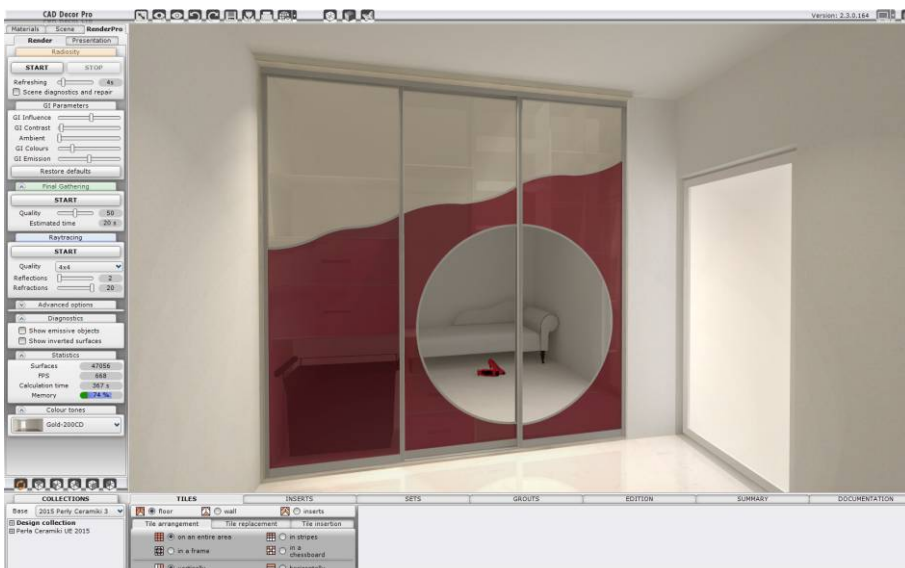
- Wardrobe construction can be established in the 5th step of the Wizard: "Wardrobe options", as well as in the "Construction" tab in the side function panel.
- Parameters of the floor, sides, ceiling, division of wardrobe interior and doors and filler strips can be defined in the Basic Options Wizard.

- In the 'Construction' tab you can select options for wardrobe's back, top and base, as well as set colours and parameters for sides and filler strips, add veneers and edit doors.



Functions available during designing

- indicating edges of the floor and plinth to be veneered
- inserting a full floor
- edition of roof and ceiling
- defining ceiling parameters – lowering, depth and protrusion
- inserting halogens in the ceiling
- parameters of the halogens (intensity, range, the shape of the generated light spot) can be freely adjusted in the visualization of our CAD programs
- you can decide whether the wardrobe back is to be divided by the walls and partitions, or should it be monolith
- by default the width of all door leaves is identical, but you can set it in



- View of designed wardrobe, visualized in CAD Decor PRO



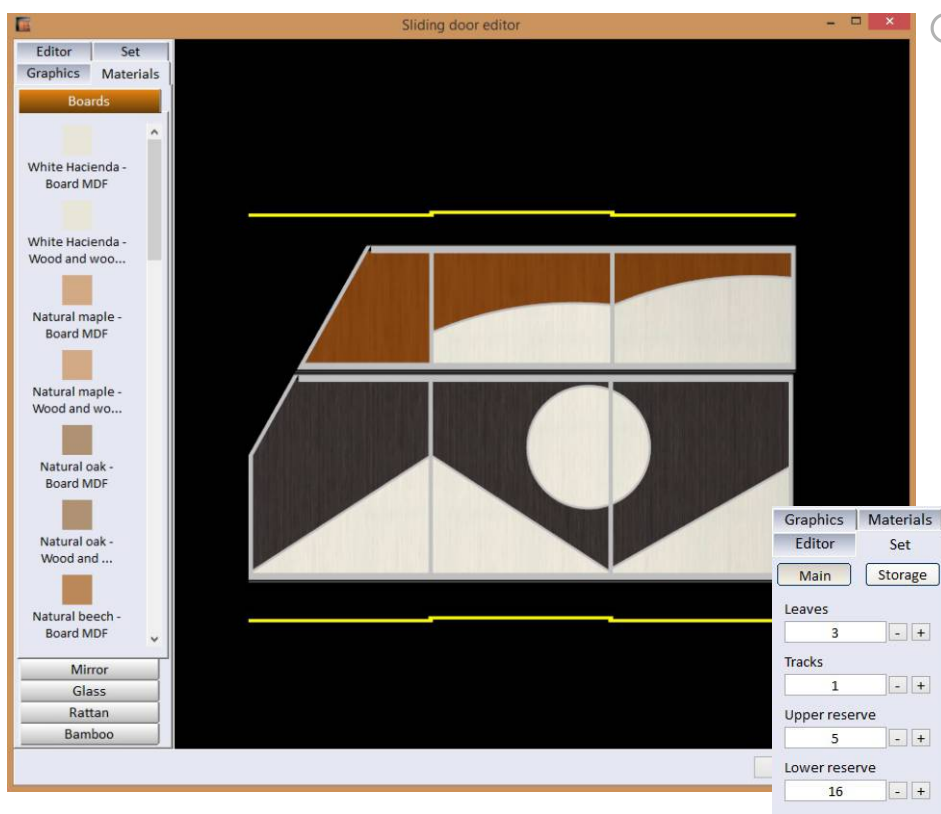
4.

Add doors, define number
of leaves and divisions



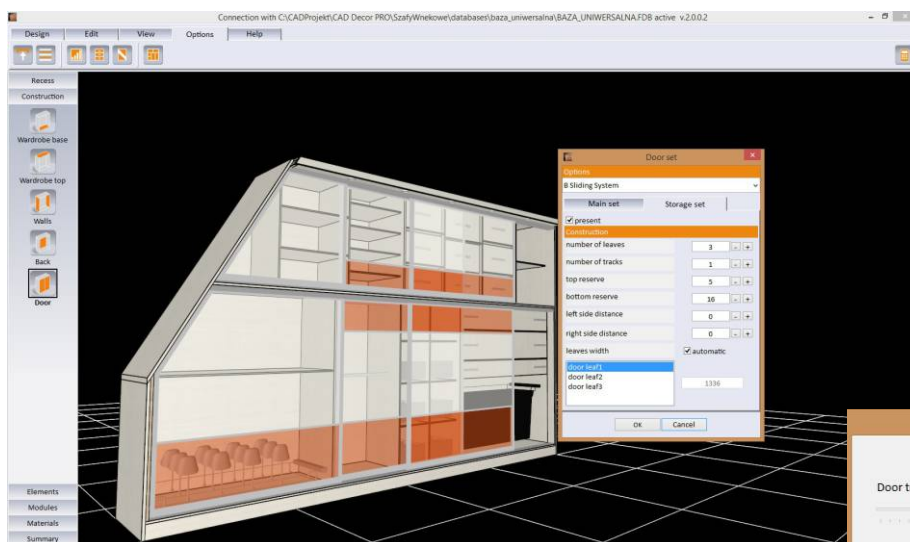
Define number of leaves, divisions and parameters of doors

- Door options are available in the module in 3 places: in the last step of the Basic Options Wizard, in the 'Options' tab in the top menu – under the 'Sliding door editor' icon, and in the side function panel in the 'Construction' tab.
- In the Basic Options Wizard you can select: a system to which the door belongs, types of side, upper and bottom profiles and the upper and bottom track, the colouring and number of doors, as well as set the presence and visibility of doors in the project.
- In the window, available under the icon 'Sliding door editor', you operate between the four tabs: 'Editor', 'Graphics', 'Set' and 'Materials'.
- The presence of the door in the project, the number of leaves and the track reserve can be also defined in the 'Construction' tab, after clicking the 'Door' button.



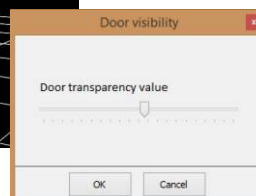
Functions of the Sliding Door Editor

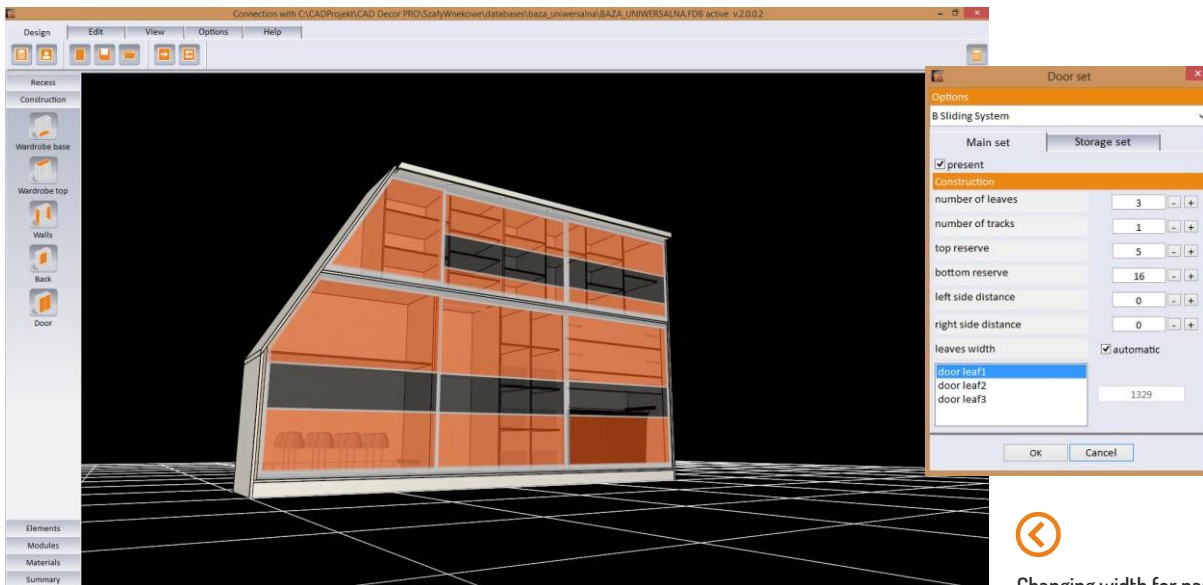
- here you can add, edit, copy and move the door divisions: straight, arc and wavy
- during the edition of divisions you can add subsequent arcs to them, to obtain elaborated patterns
- you can apply your own graphics on the entire door or their particular parts
- you can also decide on the number of the door leaves, independently for both sets of doors (main and storage ones)
- you are able to set a number of tracks on which the doors are sliding and their order
- as well as define the value of the upper and lower reserve, which is space over and below the door leave, which matters when the room ceiling or floor are uneven
- and select materials for particular parts of the door (e.g. furniture boards, mirrors, glass, rattan, bamboo)



Additional information about doors

- while working in the Wardrobe Module you can freely slide the door leaves in the interactive preview by clicking on the selected leaf and moving the mouse (you cannot do the same in our CAD programs, because they see a wardrobe as one, inseparable block)
- for greater convenience you can hide doors or make them translucent
- the complete wardrobe project can be inserted in CAD Decor, CAD Kitchens or CAD Decor PRO without doors, to obtain a quick preview of the wardrobe interiors in visualization





Changing width for particular door leaves



A result of using the 'Close and insert wardrobe without doors' option – a view in the visualization of CAD Décor PRO (black & white mode with shades)



An exemplary wardrobe with arc door divisions in the visualization created in CAD Decor PRO





5.

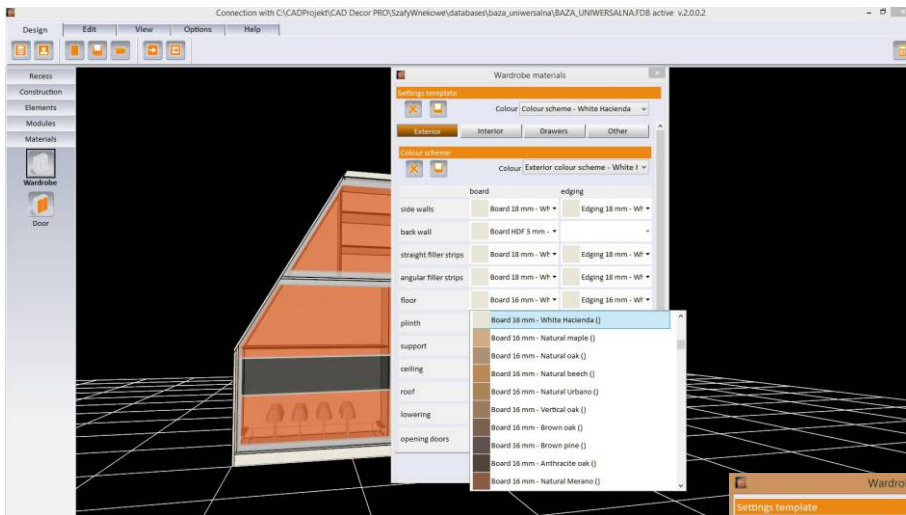
Select materials for doors
and wardrobe interior



Select materials for wardrobe and doors

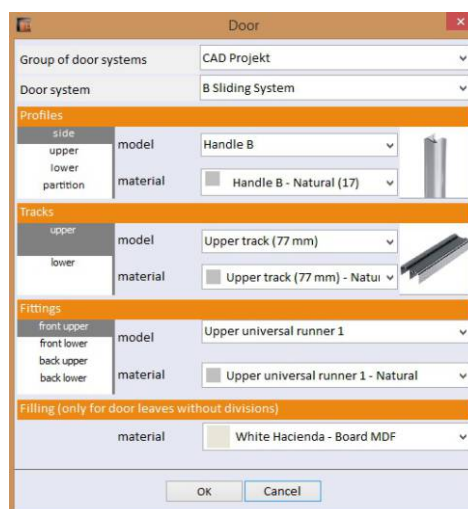
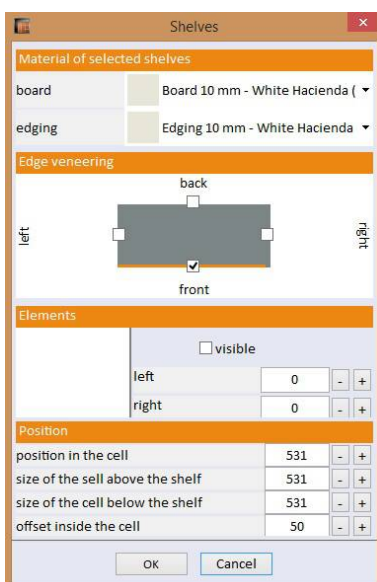
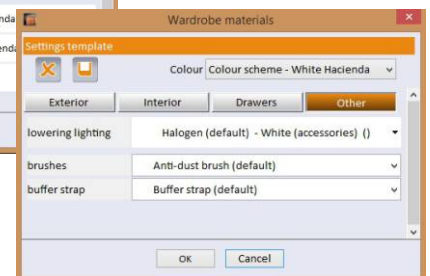
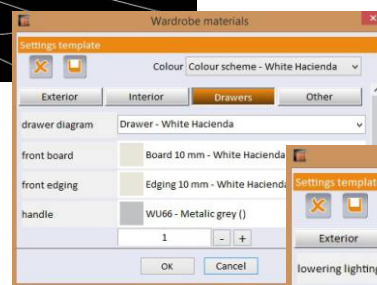
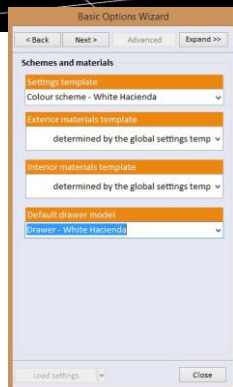
- The first place in which you can define the materials, is the 7th step of the Basic Options Wizard titled 'Schemes and materials'. Here you can choose the global settings scheme and templates for interior and exterior elements of the wardrobe.

- Second such place is the 'Materials' tab in the side panel, where you can select and save colour schemes for wardrobe interior, exterior and doors.



Selection of colour schemes and templates

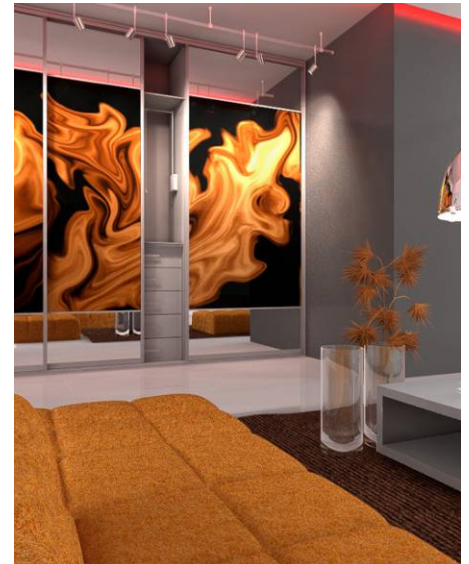
- after selecting the 'Wardrobe' button in the 'Materials' tab, you can arrange the colouring of the exterior and interior of the wardrobe and drawers
- the exterior of the wardrobe consists of: sides, filler strips, floor, plinth, support, ceiling, roof, and lowering
- the interior elements are: partitions (main and additional) and shelves (main, additional and the storage one)
- during defining the colouring you can save your own colour schemes for future use
- here you also can save your individual settings' templates
- switching between tabs in the 'Wardrobe materials' window



Selection of materials and veneers during edition

- while editing the wardrobe interior you can define used materials, veneers for partitions, shelves and drawers as well as select models of connectors (for rods) or types of runners (for drawers and pull-out shelves)
- after selecting the 'Door' option, you can also choose colours of profiles, tracks and other door accessories

☑ Example visualizations of recess wardrobes
presenting variety of used materials





6.

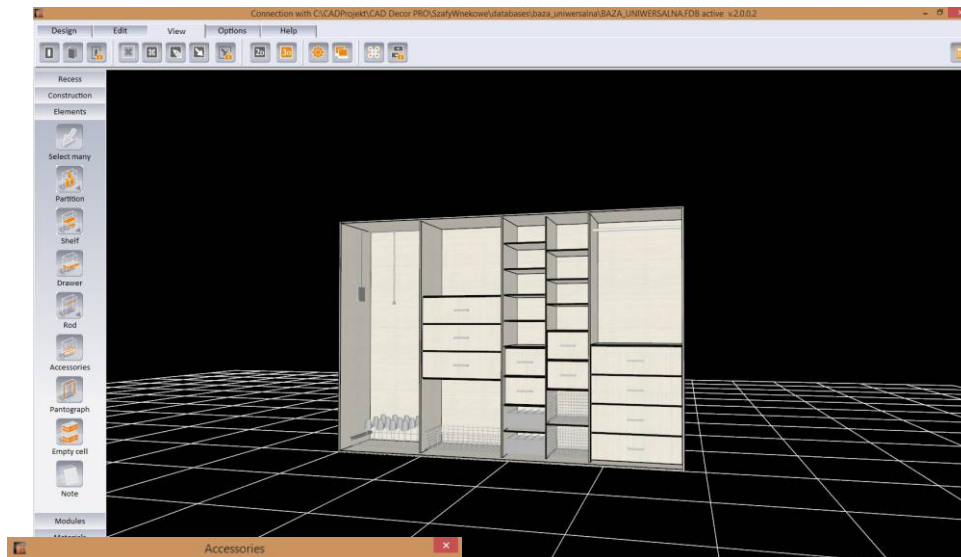
Add partitions, shelves
drawers, rods and accessories



Insert wardrobe equipment

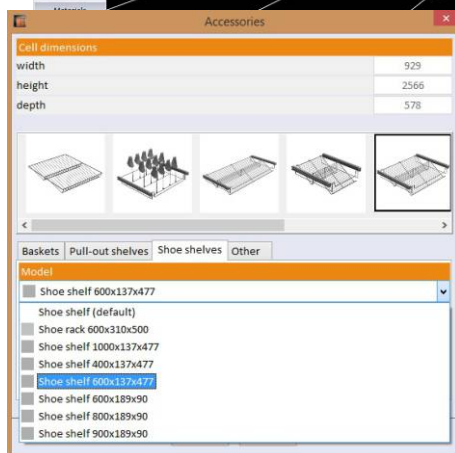
- Inserting partitions, shelves, drawers, rods, pantographs, empty cells and accessories takes place in the 'Elements' tab in the side panel.

- For your convenience we added a function of creating your own modules of accessories, and equipped the program with ready to use standard sets of elements.



Inserting wardrobe components and equipment

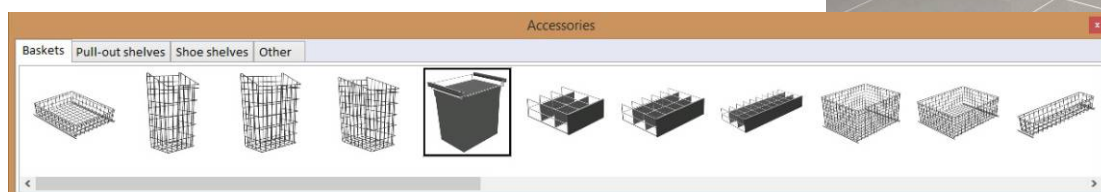
- to insert an element you have to click the icon relevant for wanted type of object and left-click in the cell, in which the object is to be located
- items will automatically evenly spread in the cell
- you can also insert them in any wanted location, disabling the automatic even distribution by pressing and holding the [Shift] key
- to end insertion of elements, click [Esc] or the right mouse button
- thanks to dynamic 3D modeling options you can move particular items on the interactive preview, simply using the mouse
- when moving the main shelf, if you press and hold [Ctrl] key, you can evenly relocate objects located in cells below that shelf



Accessories

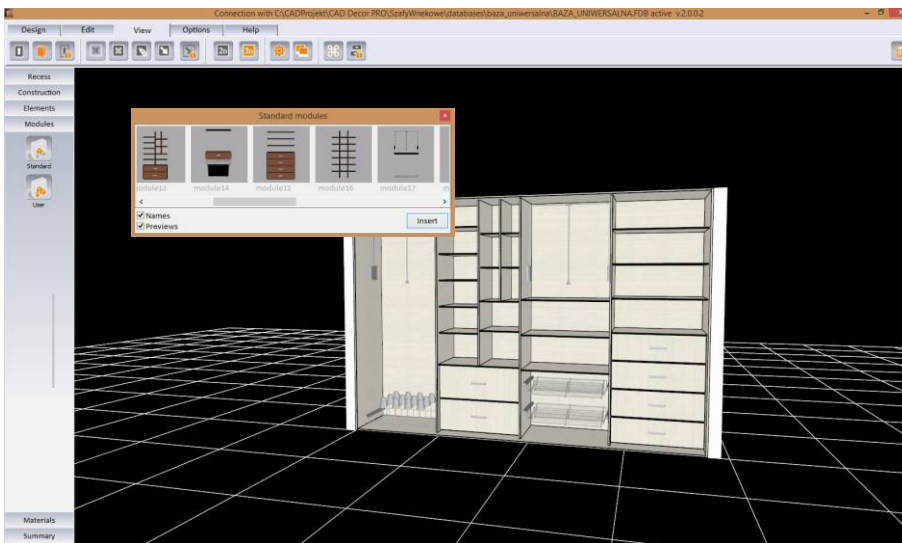
in the 'Accessories' tab you can find several dozens of items

- available are: main or additional partitions and shelves, vertical, transverse and longitudinal rods, pantographs, as well as baskets, extendable shelves, shoe holders, hangers for belts and clothes
- rods connections are not visible on the preview, but they are taken into account in design valuation
- to make it easier to use the module, dimensions of inserted drawers automatically adapt to the size a cell, unless a drawer has been blocked by the user to maintain particular parameters
- drawers inserted into the design can be edited and exchanged to other models available in the database or created by the user in 'Drawer editor'
- to keep the space in a cell unoccupied, you can use the 'empty cell' function for accessories and drawers you can also use an interesting option of ejecting them before the front of the wardrobe, what makes the visualizations look realistically and dynamically





Standard and user modules, drawer editor



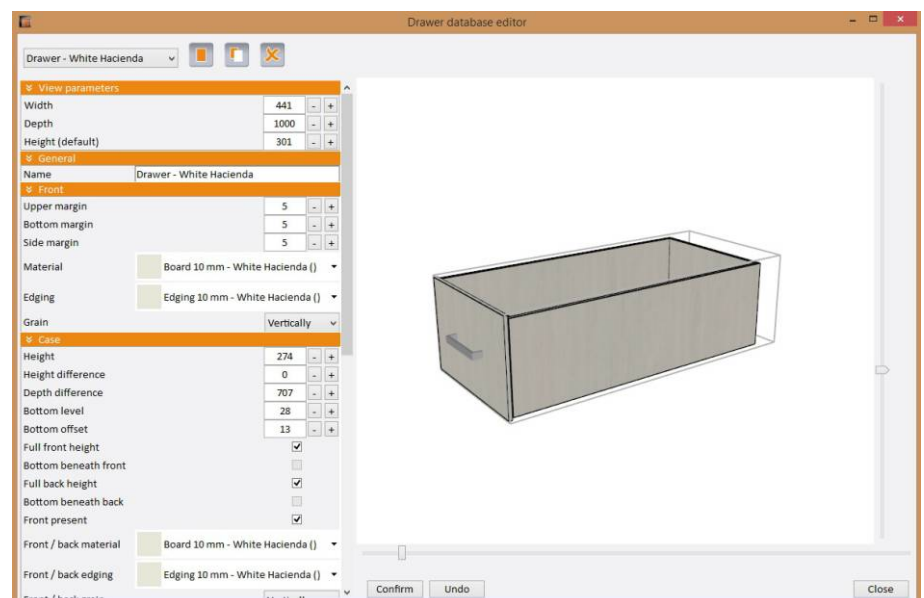
Using standard and user modules

- in the 'Modules' tab in the side pane you have access to standard modules available in the database and to custom modules, which you can compose on your own
- modules can be inserted into the wardrobe with just a few clicks or by using the 'drag-and-drop' method, what makes you work fast and easy
- modules automatically adjust to sizes and shapes of cells in which they are inserted
- it is not possible to insert too large module in a cell of inadequate dimensions
- to create your own module you should insert several items in a cell,
- mark them and select the 'Save module' option from the context menu

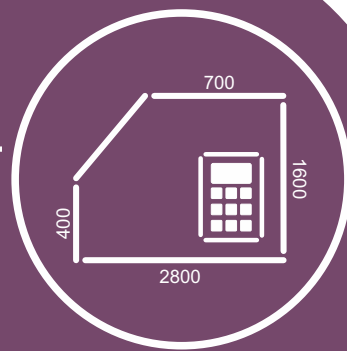


Working with Drawer Editor

- in the Editor you can change the settings for the default drawer and add any number of your own models of drawer
- the preview of a drawer, on which you can see and outline of a hypothetical cell, can be rotated by 180 degrees
- dimensions of designer drawer may change when the drawer is inserted into the wardrobe because they will be automatically adjusted to the shape of the cell, but the values of various offsets between particular parts of the drawer will be maintained
- you can determine the location of sliders and difference between their length and the depth of the drawer
- there are various models of handles available in the database
- inserted handles can be relocated



Wardrobe with equipment in CAD Decor PRO visualization



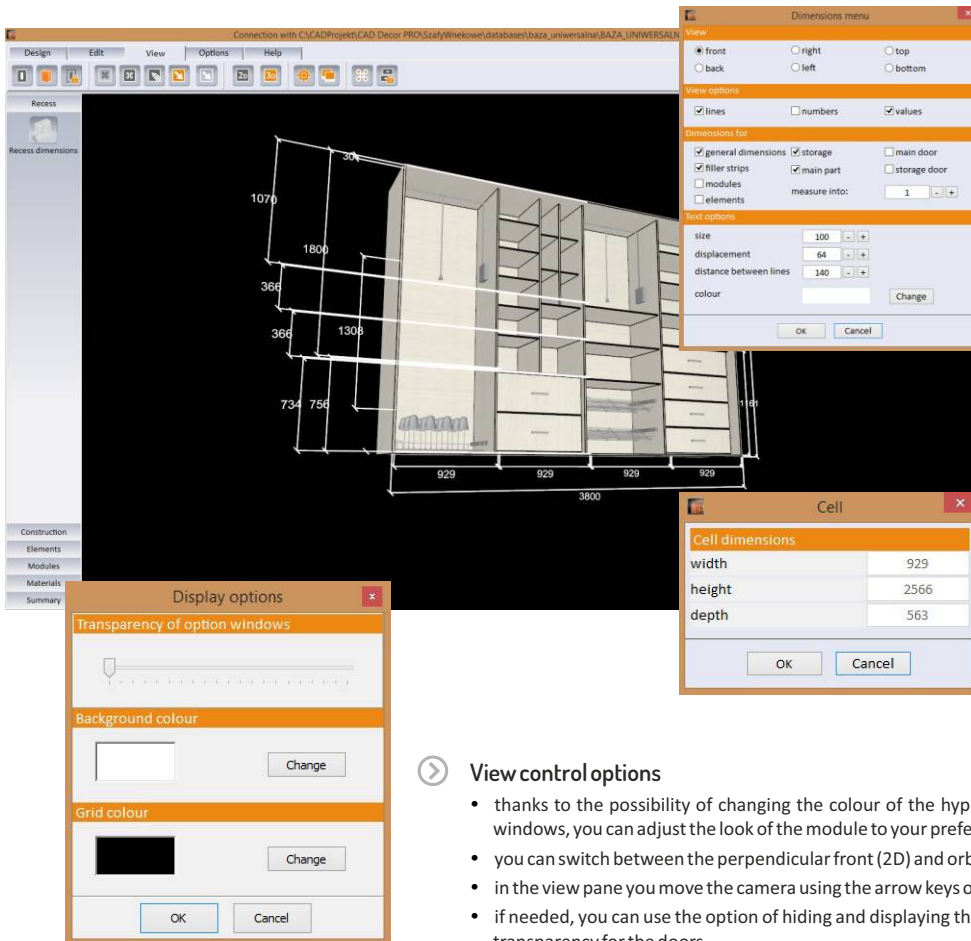
7.

Use additional functions,
add dimension lines and notes

Use additional functions

- The Wardrobe Module offers a wide range of useful additional tools, which enhance the process of creation.

- Among them are: options of displaying various views, adding notes and dimensions, creating illustrations and a possibility of defining your own keyboard shortcuts.

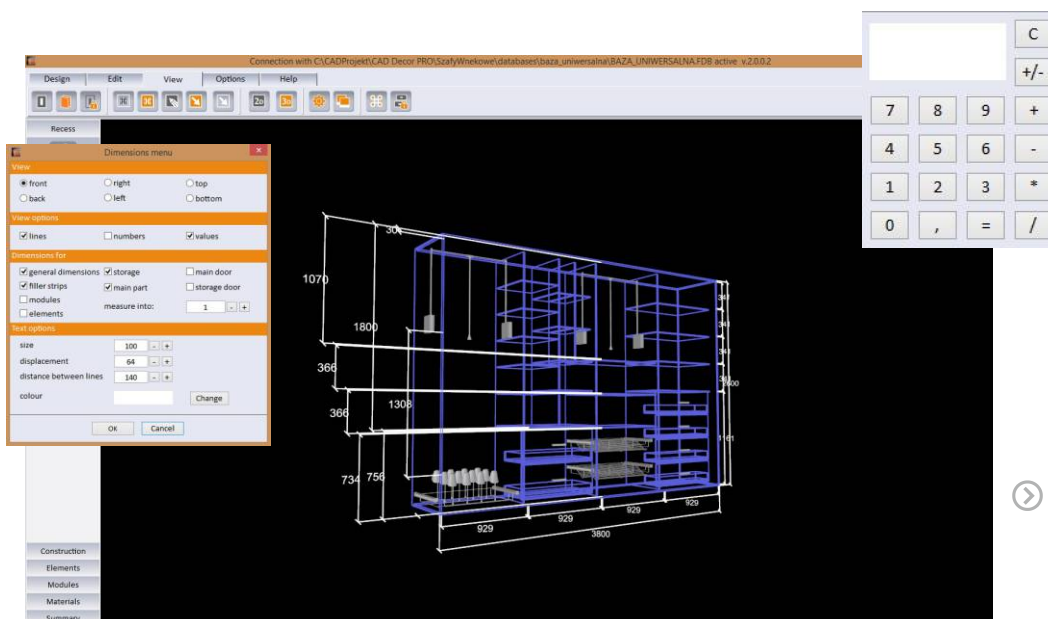


➤ Adding dimension lines

- after clicking the 'Dimension menu' you can change the look of dimensioning lines and their descriptions
- you can view dimensions of the designer wardrobe in various views: perpendicular from the front, from the back, from the bottom, and from the right or left side of the wardrobe
- you can indicate particular components of a wardrobe to be dimensioned, e.g. filler strips, main compartment, storage space etc.
- the text of the dimension description can be freely edited in regards to its size, location, colour and other traits
- dimensions of a particular cell can be checked by a double left-click

➤ View control options

- thanks to the possibility of changing the colour of the hypothetical floor and the level of transparency of option windows, you can adjust the look of the module to your preferences
- you can switch between the perpendicular front (2D) and orbital (3D) views
- in the view pane you move the camera using the arrow keys or the mouse
- if needed, you can use the option of hiding and displaying the doors or recess walls, as well as determine the level of transparency for the doors



➤ Calculator

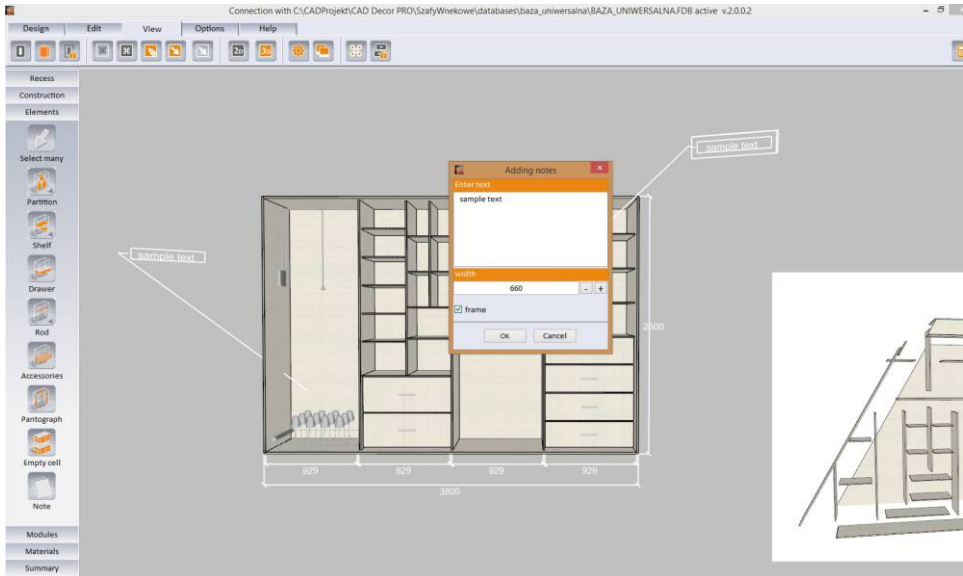
- at every stage of works in the Wardrobe Module you can use a calculator
- it is available in the right upper corner of the screen

➤ Linear view

- in order to obtain the bigger clarity, you can display the design of the wardrobe in a linear view
- switching the linear view on and of is caused by the icon 'Linear view' in the 'View' tab in the upper menu

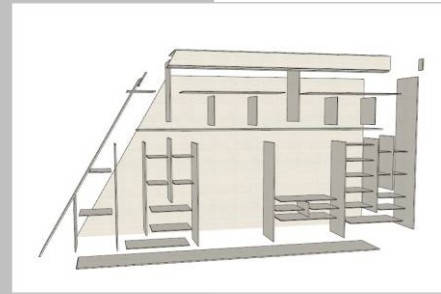


Notes, illustrations, keyboard shortcuts, 3D modeling

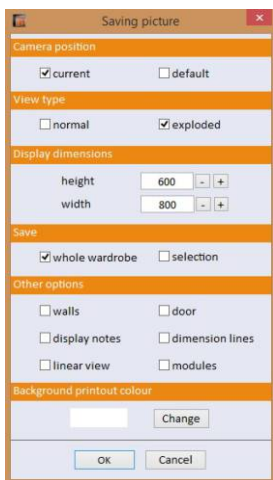


Entering notes

- labels with any desired description can be added by clicking on the 'Notes' button in the side pane in the 'Elements' tab
- you can determine the visibility of notes in the 'View' tab in the upper menu

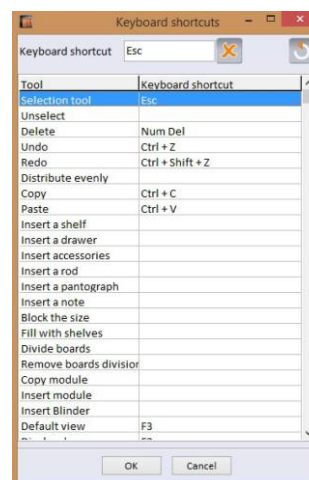


exploded view



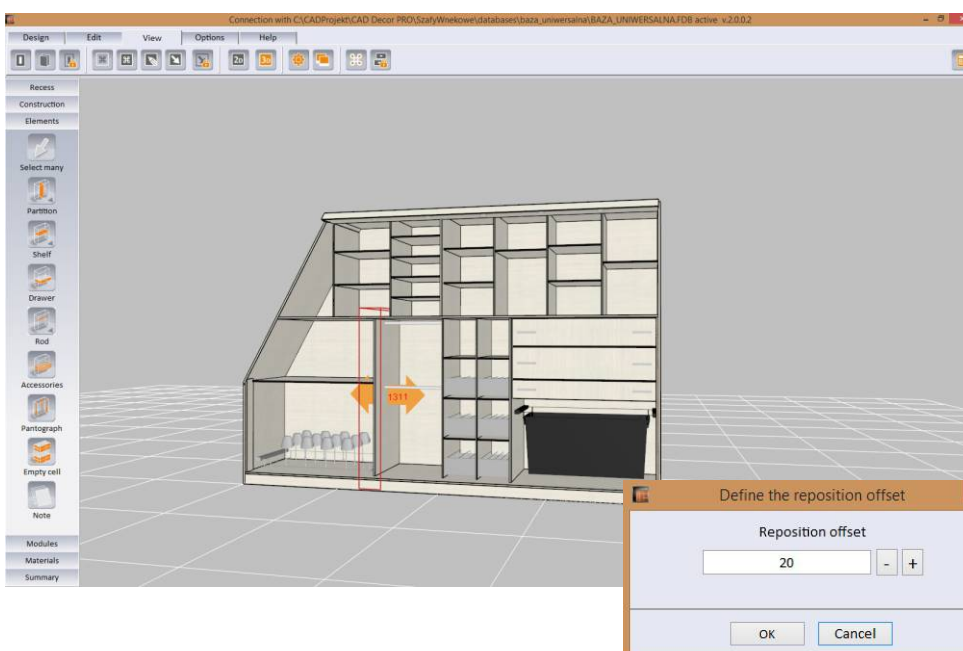
Saving illustrations

- projections and views of the designed wardrobe can be saved to the disk as picture files
- while saving illustrations you can decide about the camera location: it can be the current one or default
- you can choose the type of view – standard or exploded
- you can also define the picture dimensions, colour of the printout background and range of presented area (the entire wardrobe or only the selected fragment)
- it is also possible to freely change the visibility of walls, doors, notes, dimension lines and modules
- illustrations of the wardrobe can be also saved in the linear view



Defining shortcut commands

- for users convenience the most often used shortcuts have been already defined (for operations such as undo, redo, copy, paste) if you decide to your own shortcuts, you can freely modify these settings



Dynamic 3D modeling in interactive preview

- each internal component of a wardrobe can be moved in 3D by simply using a mouse
- in the context menu you can find additional options for moving pantographs and rods
- what is more, for drawers and accessories the 'Pull out...' option is available
- you can freely enter or erase divisions of boards of wardrobe ceiling, shelves, partitions and floor
- thanks to 'Clear cell' option you can instantly remove all objects from a cell
- all elements in a particular cell can be spread in equal distances from one another, thanks to the 'Distribute evenly' option
- a very useful function while relocating elements is the 'Reposition offset', which can be set every 10 millimeters



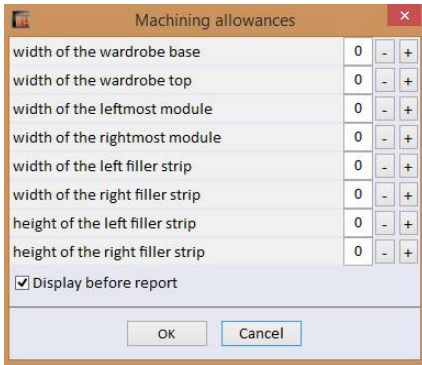
8.

Generate summary, documentation,
valuation and cut pattern



Prepare summary, valueate project, plan production

- The Wardrobe Module automatically generates the summary of components of designed piece of furniture, as well as design valuation and 3 types of reports (standard and detailed for a client and a report for production).
- Valuation features are available in the 'Summary' tab in the side pane.
- The module analyzes the errors made during designing and informs the user about them.

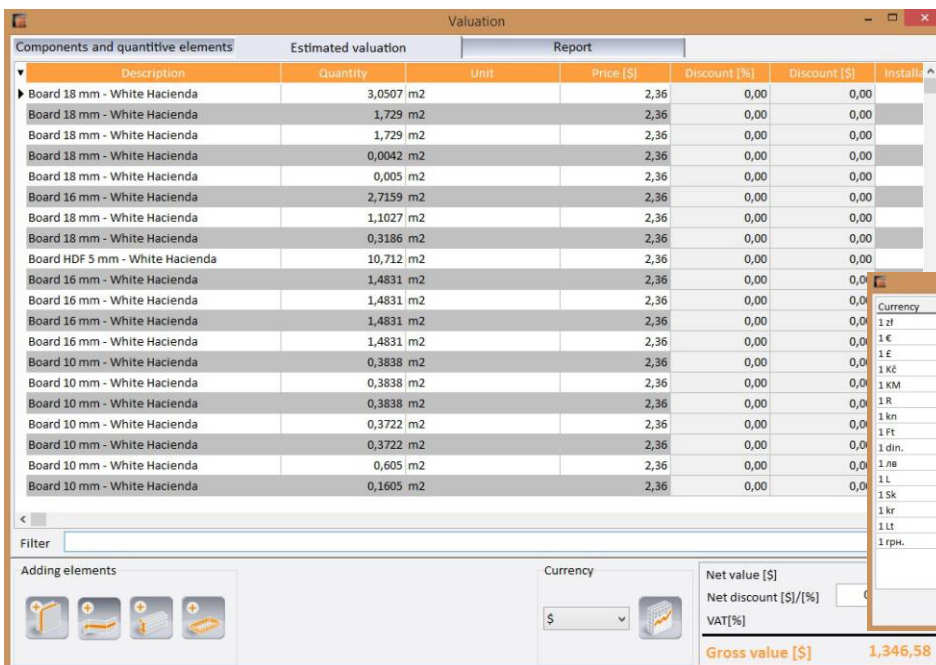
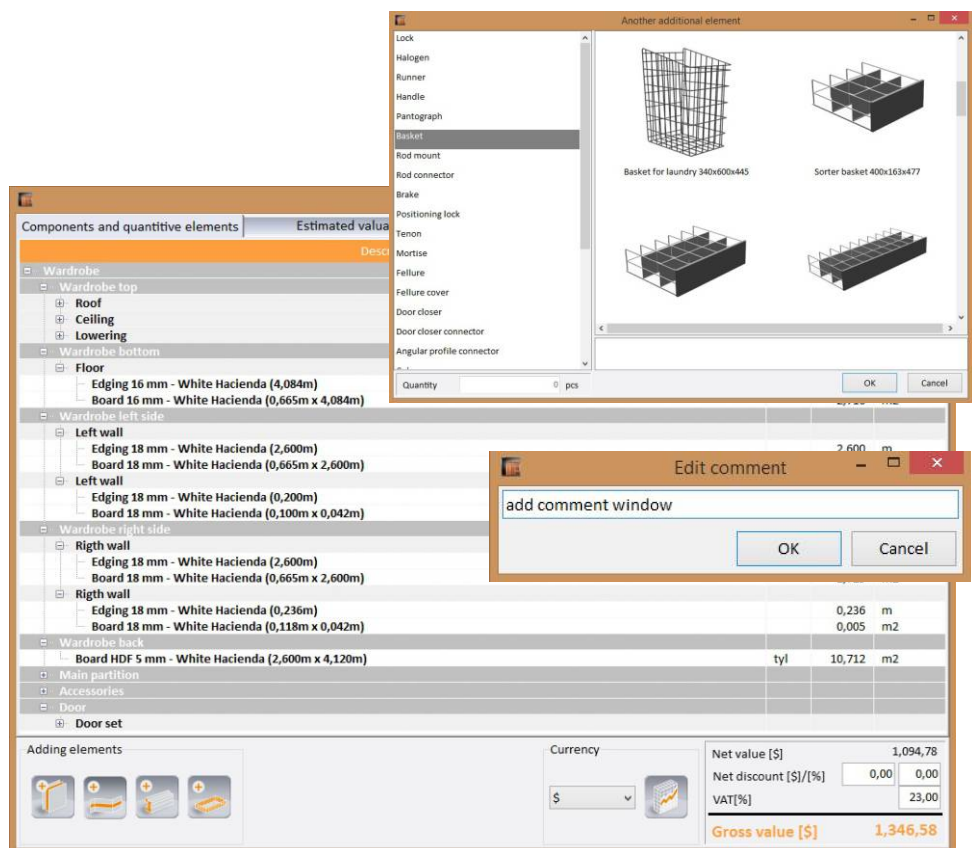


Defining allowances

before you generate the report, you can set the machining allowances which will be taken into account in the valuation

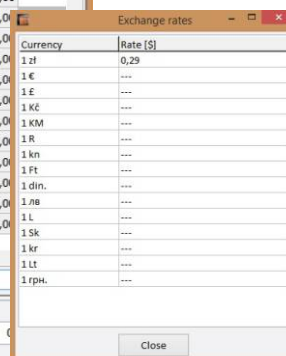
Summary of components and quantitative elements

- the summary contains a list of all used components, divided into
- specific parts, with given colours, descriptions and amounts
- here you can add such positions as:
- boards (wood or woodlike materials, glass, mirror, rattan, chipboard and MDF)
- longitudinal items (slats, seals, brushes, rims, rods, tracks, masking elements)
- profiles, connectors, corner profile bars and tees)
- other objects (locks, halogens, sliders, handles, pantographs, brakes, baskets lock pins, caps, caps and many others)
- you can also add your comments to particular parts of the summary



Valuation

- the valuation contains information about elements, their
- quantity, units, prices, discounts and cost of installation
- the value of discount is subject to edition
- you can change the currency and its exchange rate



Reports

	A	B	C	D	E	F	G	H	I	J	K	L
1	Roof()	4084	747	1	H	Board_18_White_Hac White_Hacienda				White_Hacienda		
2	Left_wall()	2600	665	1	H	Board_18_mm_White_Hacienda				White_Hacienda		
3	Right_wall()	2600	665	1	H	Board_18_mm_White_Hacienda				White_Hacienda		
4	Left_wall()	42	100	1	H	Board_18_White_Hac White_Hacienda						
5	Right_wall()	42	118	1	H	Board_18_White_Hac White_Hacienda						
6	Floor()	4084	665	1	H	Board_16_mm_White_Hacienda				White_Hacienda		
7	Ceiling()	4084	270	1	H	Board_18_mm_White_Hacienda				White_Hacienda		
8	Lowering()	4084	78	1	H	Board_18_White_Hac White_Hacienda				White_Hacienda		
9	Wardrobe_back(ty)	4120	2600	1	H	Board_HDF_5_mm_White_Hacienda						
10	Partition(1)	2566	578	1	H	Board_16_mm_White_Hacienda				White_Hacienda		
11	Partition(1)	2566	578	1	H	Board_16_mm_White_Hacienda				White_Hacienda		
12	Partition(1)	2566	578	1	H	Board_16_mm_White_Hacienda				White_Hacienda		
13	Partition(1)	2566	578	1	H	Board_16_mm_White_Hacienda				White_Hacienda		
14	Shelf(1_1_1)	664	578	1	H	Board_10_mm_White_Hacienda				White_Hacienda		
15	Shelf(1_1_1)	664	578	1	H	Board_10_mm_White_Hacienda				White_Hacienda		
16	Shelf(1_1_1)	664	578	1	H	Board_10_mm_White_Hacienda				White_Hacienda		
17	Shelf(1_1_2)	644	578	1	H	Board_10_mm_White_Hacienda				White_Hacienda		
18	Shelf(1_1_2)	644	578	1	H	Board_10_mm_White_Hacienda				White_Hacienda		
19	Shelf(1_1_3)	1104	548	1	H	Board_10_mm_White_Hacienda				White_Hacienda		
20	Shelf(1_1_4)	304	528	1	H	Board_10_mm_White_Hacienda				White_Hacienda		
21	Shelf(1_1_4)	304	528	1	H	Board_10_mm_White_Hacienda				White_Hacienda		
22	Shelf(1_1_4)	304	528	1	H	Board_10_mm_White_Hacienda				White_Hacienda		
23	Shelf(1_1_4)	304	528	1	H	Board_10_mm_White_Hacienda				White_Hacienda		
24	Shelf(1_1_4)	304	528	1	H	Board_10_mm_White_Hacienda				White_Hacienda		
25	Shelf(1_1_5)	1304	548	1	H	Board_10_mm_White_Hacienda				White_Hacienda		
26	Partition(1_5_2_2)	1740	533	1	H	Board_16_mm_White_Hacienda				White_Hacienda		
27	Shelf(1_5_2_2_1)	644	518	1	H	Board_10_mm_White_Hacienda				White_Hacienda		
28	Shelf(1_5_2_2_1)	644	518	1	H	Board_10_mm_White_Hacienda				White_Hacienda		
29	Shelf(1_5_2_2_1)	644	518	1	H	Board_10_mm_White_Hacienda				White_Hacienda		
30	Shelf(1_5_2_2_1)	644	518	1	H	Board_10_mm_White_Hacienda				White_Hacienda		
31	Shelf(1_5_2_2_1)	644	518	1	H	Board_10_mm_White_Hacienda				White_Hacienda		
32	Shelf(1_5_2_2_2)	644	518	1	H	Board_10_mm_White_Hacienda				White_Hacienda		
33	Shelf(1_5_2_2_2)	644	518	1	H	Board_10_mm_White_Hacienda				White_Hacienda		
34	Partition(1_5_2_2_3)	1092	503	1	H	Board_16_mm_White_Hacienda				White_Hacienda		
35	Shelf(1_5_2_2_3_1)	314	488	1	H	Board_10_mm_White_Hacienda				White_Hacienda		
36	Shelf(1_5_2_2_3_1)	314	488	1	H	Board_10_mm_White_Hacienda				White_Hacienda		
37	Shelf(1_5_2_2_3_1)	314	488	1	H	Board_10_mm_White_Hacienda				White_Hacienda		

- in this tab you can see the preview of a currently chosen report style
- you can offer two types of reports to your client: standard and detailed
- the report for production may contain illustrations and list of elements with hyperlinks to boards schemes
- reports can be exported to PDF or CSV files
- the exemplary CSV file, presented on illustration, contains data of component formats of a wardrobe
- the CSV file format is read by the CAD Cut application in which you can instantly obtain the optimal cut pattern
- the standard report
- the detailed report
- editable report header

Cooperation with CAD Cut

CAD Cut is an optional module for CAD Decor PRO and CAD Kitchens Standard, and an integral part of the CAD Kitchen MAX system.

The screenshot displays the CAD Cut software interface. On the left, a list of components is shown with columns for Name, Length, Width, and Quantity. In the center, a preview of the sheet cutting pattern is visible, showing the layout of the components on the sheet. On the right, a panel displays optimization results, including the number of sheets used and the percentage of unused material.

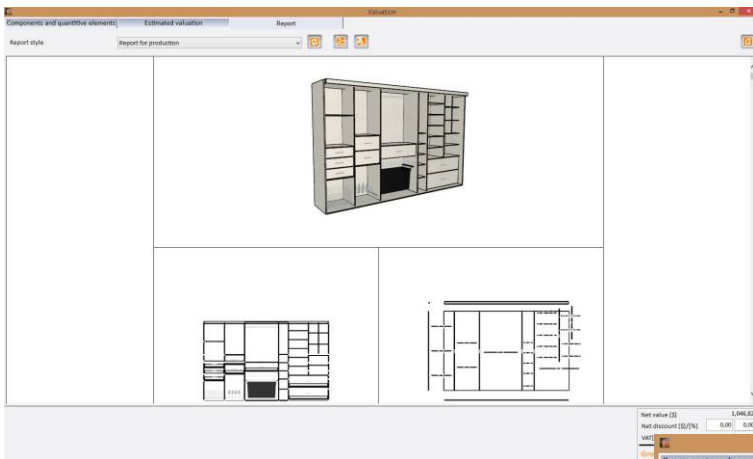
Standard version of the report

Reports for clients

The screenshot displays the CAD Project K&A software interface. On the left, a detailed report for a client is shown, including a list of components with columns for Name, Length, Width, and Quantity. In the center, a 3D model of the wardrobe is visible. On the right, a panel displays the detailed report header, including the project name, date, and contact information.

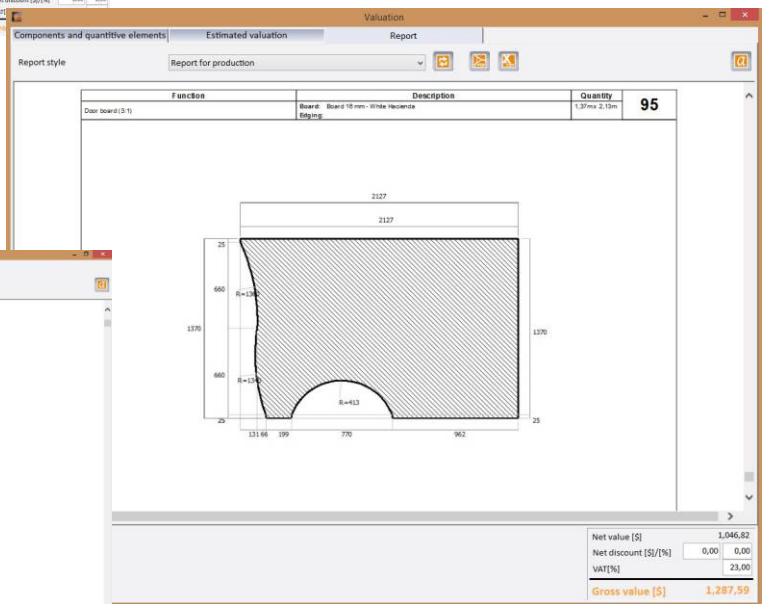
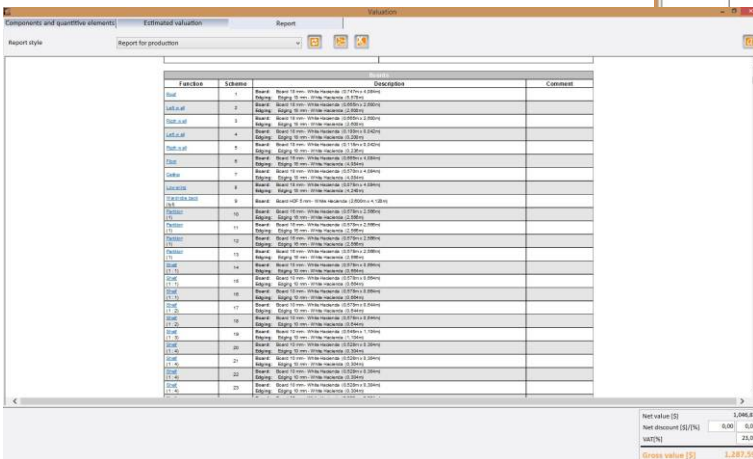
Detailed version of the report

Editable report header



Reports for production

- illustrations present the report for manufacturer
- it contains dimensioned schemes for boards
- if you change the discounts or add new item after generation of the report, you can load the most current data by clicking the 'Refresh report' button
- the list of elements contains hyperlinks allowing to quickly find the technical drawing of a selected board



Price-list editor

- here you can edit the values of the 'sale price' and 'VAT' [%]' entering the new value manually
- in the 'Currency' column you can select the currently used currency
- in the „Net/Gross“ column you can decide about visibility of price without or with the tax

Price-list editor								
Filter	Manufacturer	Model	Material	Currency	Purchase price	Sale price	Net / Gross	VAT [%]
		Wooden board 10 mm (default)	White (default)	zł	0,00	10,00	Gross	23,00
		Glass 5 mm (default)	Transparent white (default)	zł	0,00	10,00	Gross	23,00
		Mirror 5 mm (default)	White mirror (default)	zł	0,00	10,00	Gross	23,00
		Rattan board 10 mm (default)	White (default)	zł	0,00	10,00	Gross	23,00
		Laminated chipboard 10 mm (default)	White (default)	zł	0,00	10,00	Gross	23,00
		Board MDF 10 mm (default)	White (default)	zł	0,00	10,00	Gross	23,00
		Lacobel board 10 mm (default)	Transparent white (default)	zł	0,00	10,00	Gross	23,00
		Bamboo board 10 mm (default)	White (default)	zł	0,00	10,00	Gross	23,00
		Graphics on the board	White (default)	zł	0,00	10,00	Gross	23,00
		Untypical board 10 mm (default)	White (default)	zł	0,00	10,00	Gross	23,00
		Board HDF 3 mm (default)	White (default)	zł	0,00	10,00	Gross	23,00
		Mirror 4 mm	Mirror	zł	0,00	10,00	Gross	23,00
		Glass panel 4 mm	Glass White	zł	0,00	10,00	Gross	23,00
		Glass panel 4 mm	Glass Delicate white	zł	0,00	10,00	Gross	23,00
		Glass panel 4 mm	Glass White pearl	zł	0,00	10,00	Gross	23,00
		Glass panel 4 mm	Glass Medium beige	zł	0,00	10,00	Gross	23,00
		Glass panel 4 mm	Glass Beige	zł	0,00	10,00	Gross	23,00
		Glass panel 4 mm	Glass Orange	zł	0,00	10,00	Gross	23,00
		Glass panel 4 mm	Glass Grey	zł	0,00	10,00	Gross	23,00
		Glass panel 4 mm	Glass Metallic grey	zł	0,00	10,00	Gross	23,00
		Glass panel 4 mm	Glass Intensive aluminum	zł	0,00	10,00	Gross	23,00
		Glass panel 4 mm	Glass Deep grey	zł	0,00	10,00	Gross	23,00
		Glass panel 4 mm	Glass Black	zł	0,00	10,00	Gross	23,00



9.

Create fabulous visualization
of wardrobe in our CAD programs

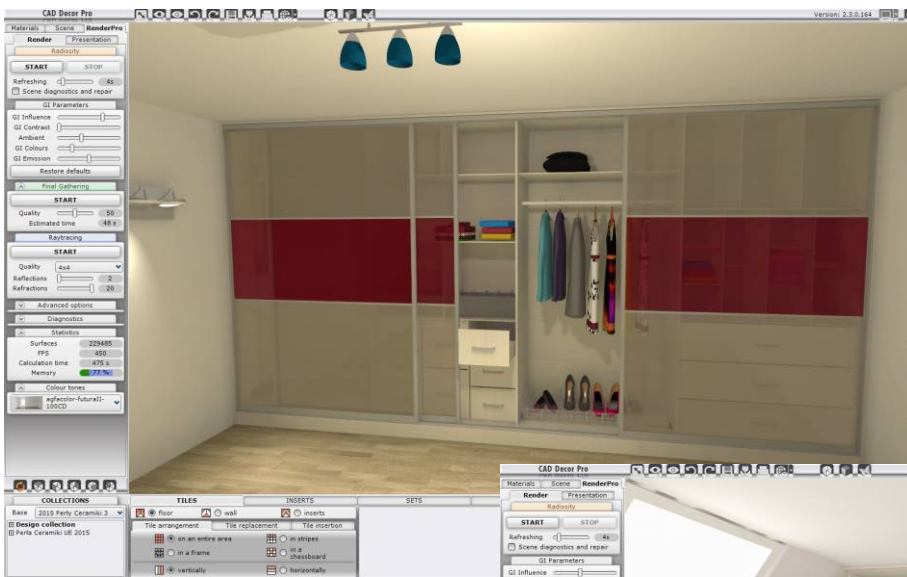


Cooperation between Wardrobe Module and CAD software

- After inserting the wardrobe project in our CAD programs, it will be displayed together with defined materials and properties (graphics, glass, mirror, etc.).
- If you place halogens in the wardrobe's ceiling they will emit light like any other light-sources in the design created in our CAD programs and can be edited in the same way in order to change their parameters (intensity,

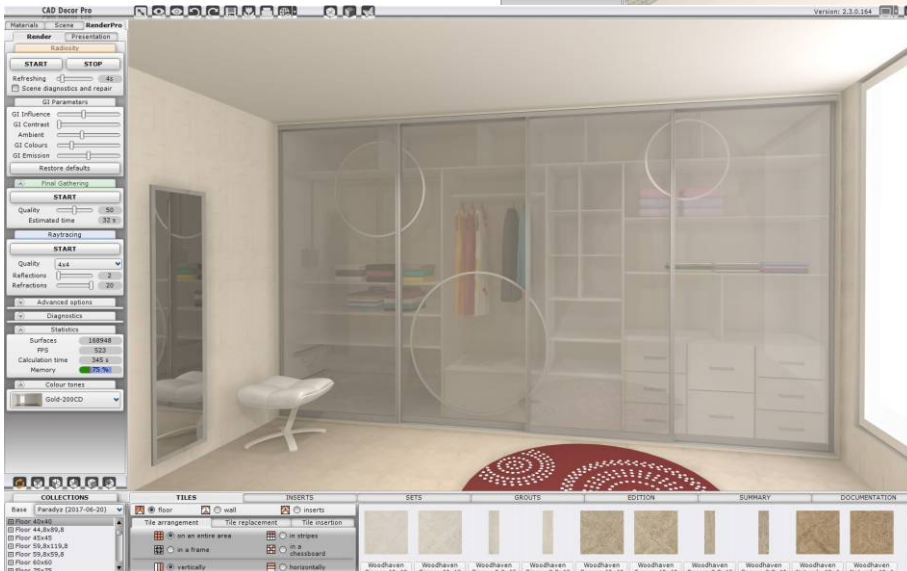
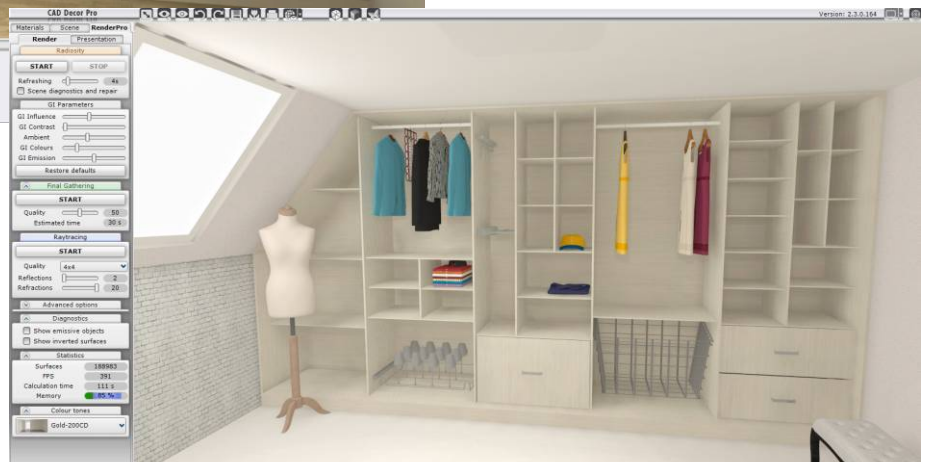
range, cone angle, colour, shape of generated light field-on the basis of IES files).

- What is more, in the optional Professional Rendering Module for our CAD software you will find options, which enable you to obtain the optimal light distribution and photo-realistic look of the room and the wardrobe.



- Wardrobe in visualization generated in CAD Decor PRO with pulled-out drawers, baskets and shelf for shoes

- Wardrobe in visualization created in CAD Decor PRO with bevels and hidden doors, presenting the interior



- Wardrobe in visualization made in CAD Decor PRO with transparent doors



➤ **Wardrobe without doors**
visualization generated in CAD Decor PRO



➤ **Wardrobe with doors**
visualization prepared in CAD Decor PRO



➤ **Wardrobe – simplified visualization**
schematic black-and-white visualization with shadows



➤ **Visualization processed in photo editor**
a combination of colour and black-and-white illustration made in CAD Decor PRO, created in professional tool for processing photographs

Now it's all up to you!
We wish you fluent and pleasant work!



Follow us on these channels



We care about our customers

• trainings

We provide trainings in CAD Projekt K&A's main office in Poznań. We offer individual and group trainings (max. 6 persons) at basic and advanced levels.

Tel. 61 827 98 44, e-mail: szkolenia@cadprojekt.com.pl

• service package

Free Service Package for a period of 12 months from the date of program purchase. It provides software updates and upgrades, technical support and access to new database releases. We also assist our customers via phone or email and remotely.

Tel. 61 642 90 82, e-mail: pomoc@cadprojekt.com.pl

• temporary keys

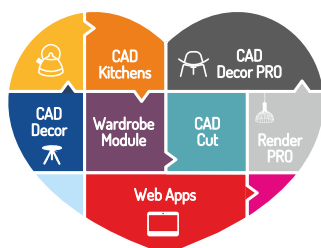
The possibility to work with the full version of our software for a specified time. For only € 55 we offer a 30-day temporary key with full technical support, so you can make your decision after conscious consideration and trial...

• knowledge centre

There is a special page in the Designers Zone at our website where we provide video tutorials, FAQ, examples of tiles layout definitions, current operating manuals of programs and applications and the detailed history of our software updates.

• designers' gallery

(www.cadprojekt.com.pl/strefa_projektantow/galeria_projektantow.html). Designers' profiles along with their contact data listed on our website allow an unlimited number of design visualizations to be displayed for free.



get to know our applications



CAD PROJEKT K&A

CAD Projekt K&A Sp. z o.o.
ul. Rubież 46, 61-612 Poznań
tel. +48 61 662 38 83
e-mail: biuro@cadprojekt.com.pl
www.cadprojekt.com.pl



IntelliCAD and the IntelliCAD logo are registered trademarks of The IntelliCAD Technology Consortium in the United States and other countries.