



CAD PROJEKT K&A

Operation manual

Print project from the CAD environment

CAD Kitchens 8.0, CAD Decor 4.0, CAD Decor PRO 4.0

INTRODUCTION

This manual describes the process of printing your design from 2D environment.

We wish you a pleasant and fruitful work with our software!

CAD Projekt K&A team

Copyright


This document is protected by the intellectual property rights of CAD Projekt K&A. Copying, distribution and / or modification of the following document is allowed under the terms of the license agreement. The license agreement is available in electronic form upon program installation.

Limitation of liability

Information in this document, including URL and other Internet Web site references, is subject to change without notice. CAD Projekt K&A reserves the right to introduce changes to the rules of technical support without prior notice. If it is necessary to change telephone numbers, relevant information will be provided on our website www.cadprojekt.com.pl.

The manual provides instructions and keyboard shortcuts for the previous 32-bit version of the program environment. The program now runs in a 64-bit environment. The commands and keyboard shortcuts may have changed as a result. Additionally, the program's interface has been updated.

1. Introductory remarks

In the program, it is possible to print the design directly from the .4CAD environment. This function is available under the icon  "Print..." on the bar "Standard" and on the main menu "File". → "Print...".

2. Print settings

To print the project in the form of a line drawing, you need to:


- go to the .4CAD environment and select the projection to be printed;
- select the "Print..." command from the "File" top menu or the "Print..." icon  on the "Standard" icon bar .(Illustration 1);
- the "Print" window will open." (Illustration 2);



Illustration 1 Toolbar "Standard"

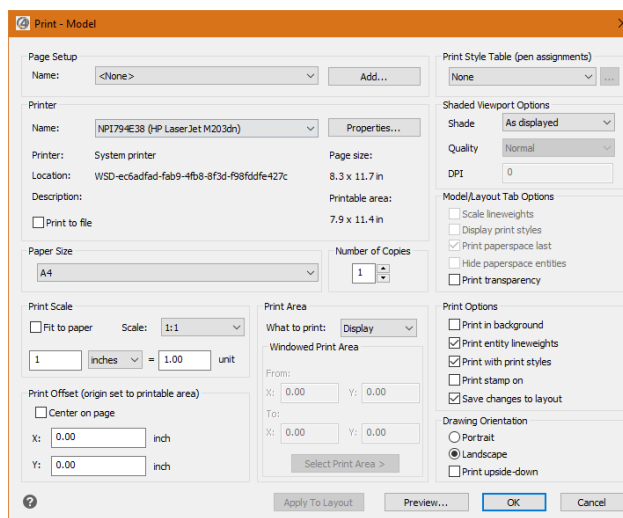


Illustration 2 Window „Print“

- in the "Scale/View" tab, in the "Print area" field, select the "Window" option;
- at the top right of the window, you can check the "Save changes to layout" option to save your print settings for reuse(Illustration 3);

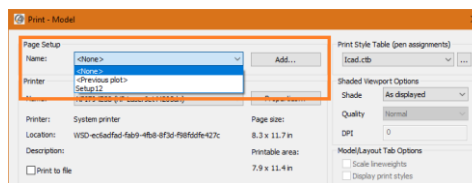


Illustration 3 Selection of print layout - current or previous

- you can also indicate here whether you want to display the settings of the previous or current printout;
- to indicate the area to be printed in the project, click on the "Select Print Area" button and after moving to the project, select from left to right the area covering the entire project;
- in the field "Print Scale" , the item "Scale to fit" should be selected - it is set by default;
- in the field "User Defined Scale" select the unit "Millimetres";
- in this tab, in the "Print Offset" box, check the "Center on page" (Illustration 4) option to center the printout;

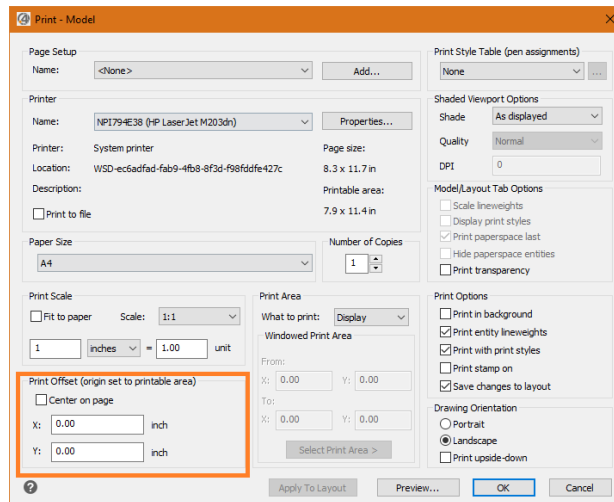


Illustration 4 Print centring

- then set Print Setup button and select the printer, size (e.g. A4, A3) and page orientation (landscape or portrait) (Illustration 5);
- you can start printing - select the "Print" button.

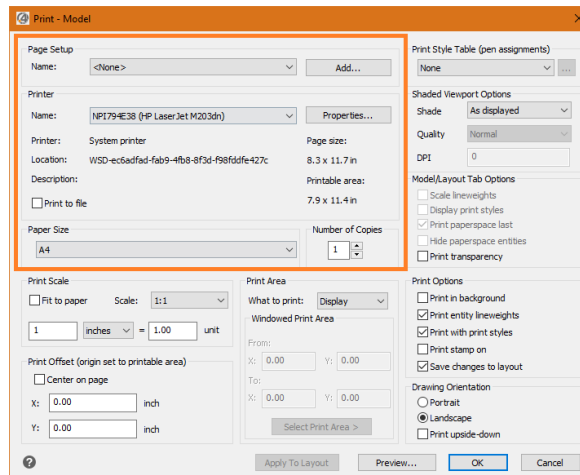


Illustration 5 Print settings

3. Defining line parameters for IntelliCAD 6

In some cases, it is required to change the thickness or color of the lines on the printout (e.g., to meet the requirements of technical drawing or when the lines are drawn in light colors and are not visible after printing).

To do so, it is necessary to:

- in the "Print" window, on the "Advanced" tab, in the "Print style table (Pen Assignments)" field, select from the drop-down menu of the "Name" item: "default.ctb." (Illustration 6);
- then select "Yes" in the .4CAD window and click on the "Edit" button;

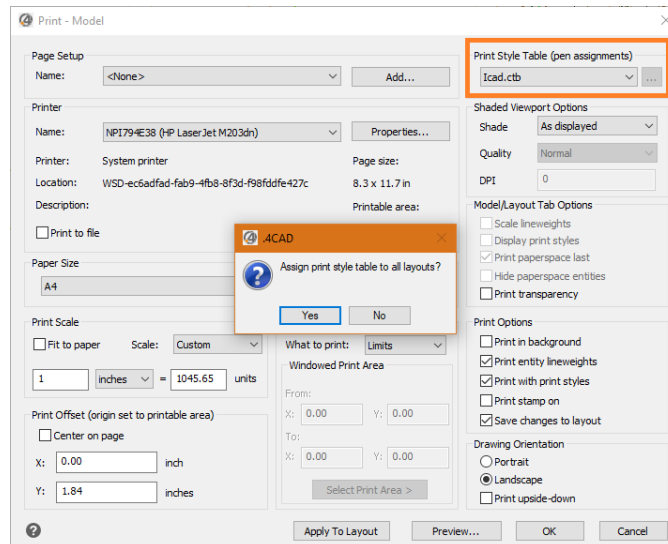


Illustration 6 Function selection: "Print style table"

- in the newly opened dialog box named **"Print Style Table Editor - default.ctb"** (Illustration 7), specifically in the field **"Print styles"**, click on the first item containing color, and then on the last item simultaneously while holding down the **[Shift]** key, so that all items in the list are simultaneously selected (Illustration 8);
- in the **"Style Properties"** section, in the **"Color"** field, select the color black (**"Black"**), and in the **"Lineweight"** field, select a line thickness of 0.100 mm;
- the settings should be confirmed with the **"OK"** button.

For walls, you have the option to set a larger line thickness, such as 0.200 mm. To do this, locate the Color_31 item (which was defined for the wall layer) and assign the new thickness to it.

Note that the settings can be saved to disk by selecting 'Save as' and saved in a CTB file. These settings can be loaded the next time the project is printed in DWG format.

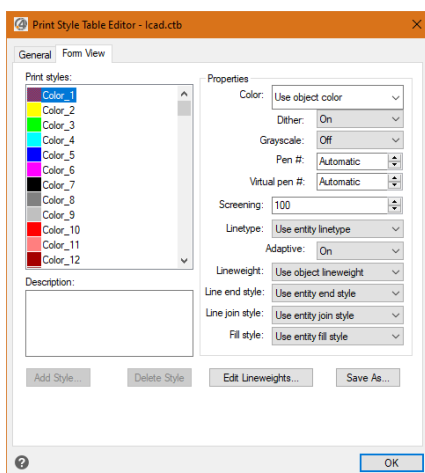


Illustration 7 Window „Print style table...”

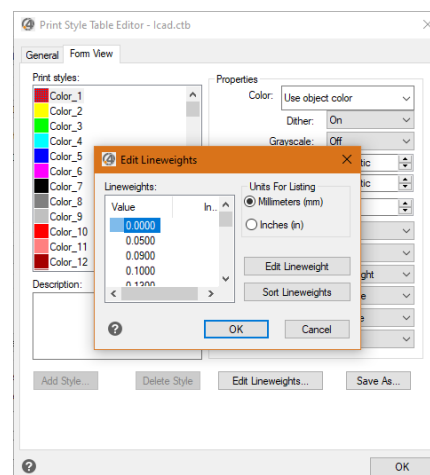


Illustration 8 Line weightediting

Additional information

1. Instructional videos

- Printing the design from the 2D environment

2. Shortcuts and commands

The document compares keyboard shortcuts in the .4CAD and visualization environments and lists the most frequently used commands in versions up to 3.Xi/7.X and version 4.X/8.X (both 34 and 64 bit versions of the environment). Find the document at: <https://www.cadprojekt.com.pl/zasoby/pdf/opisy-techniczne/shortcuts-4-0-8-0-eng.pdf>

This document provides an overview of keyboard shortcuts and commonly used commands in the .4CAD environment for visualization. The shortcuts and commands can be issued using either the mouse or keyboard. It can be accessed at: <https://www.cadprojekt.com.pl/zasoby/pdf/opisy-techniczne/shortcuts-4-0-8-0-64bit-eng.pdf>

In the above list, LPM and RMB stand for left and right mouse buttons, respectively. A command notation with a + sign (e.g. [Ctrl] + [Z]) indicates that both keys should be pressed simultaneously, while a notation with a >> symbol (e.g. [E] >> [Enter] or [Space]) means that you should first type E and then press [Enter] or the space bar.

Technical support

Mon-Fri from 8 a.m. to 5 p.m.

pomoc@cadprojekt.com.pl

tel. +48 61 662 38 83

Contact form

We would like to inform you that we provide training in the use of our programs. For more information, please visit our website: <https://www.en.cadprojekt.com.pl/trainings/>

Training section

szkolenia@cadprojekt.com.pl

tel. +48 505 138 863



CAD PROJEKT K&A

CAD Projekt K&A Sp.J. Dąbrowski, Sterczała, Sławek
ul. Rubież 46 | 61-612 Poznań | tel. +48 61 662 38 83
biuro@cadprojekt.com.pl | www.cadprojekt.com.pl



IntelliCAD and the IntelliCAD logo are registered trademarks of The IntelliCAD Technology Consortium in the United States and other countries.