



CAD PROJEKT K&A

Operation manual

Kitchen Cabinets and Cabinet Editor

CAD Kitchens 8.0, CAD Decor PRO 4.0

INTRODUCTION

This manual provides instructions for using the kitchen cabinets module, including inserting and editing items, as well as using the User Cabinet Editor..

We hope that you will find our software both pleasant and productive to work with. Best regards, the CAD Projekt K&A team

Copyright

This document is protected by the intellectual property rights of CAD Projekt K&A. Copying, distribution and / or modification of the following document is allowed under the terms of the license agreement. The license agreement is available in electronic form upon program installation.

Limitation of liability

Information in this document, including URL and other Internet Web site references, is subject to change without notice. CAD Projekt K&A reserves the right to introduce changes to the rules of technical support without prior notice. If it is necessary to change telephone numbers, relevant information will be provided on our website www.cadprojekt.com.pl.

Table of contents

KITCHEN CABINET INSERT	4
1. INTRODUCTION.....	4
2. SET PREVIEW	6
3. PREVIEW OF CABINETS INCLUDED	6
4. CABINET SELECTION.....	6
4.1. <i>Filters</i>	6
4.2. <i>Browse cabinets by size</i>	7
4.3. <i>Searching for a specific cabinet model</i>	7
4.4. <i>Selection and review of additional cabinet components</i>	8
5. INSERT BASE CABINETS	8
5.1. <i>Inserting the first cabinet based on the "Indicate Point " function"</i>	9
5.2. <i>Inserting the first cabinet based on the function "To corner"</i>	9
5.3. <i>Adding more cabinets</i>	9
6. INSERTING CABINETS WITH HOUSEHOLD APPLIANCES	10
7. INSERTING HANGING CABINETS	11
7.1. <i>Adding more hanging cabinets</i>	12
8. ADDITIONAL CABINET PLACEMENT PARAMETERS	13
9. AUTOMATIC AUXILIARY DIMENSIONING	13
10. CABINET EDITION	14
HOME APPLIANCES	16
1. INTRODUCTORY REMARKS	16
2. DESIGN OF THE HOUSEHOLD APPLIANCE MODULE	16
3. SINKS AND HOTPLATES INSTALLATION	18
3.1. <i>Free-standing equipment installation</i>	18
3.2. <i>Inserting faucets into sinks</i>	18
3.3. <i>Installing built-in equipment</i>	19
4. INSERTING THE HOOD.....	20
CABINET DESIGN AND EDITION MODULE	21
1. INTRODUCTORY REMARKS	21
2. KITCHEN CABINET DATABASE EDITOR.....	21
3. TOP MENU	22
3. <i>Other features of the "Cabinet Base Editor"</i>	23
4. USER CABINET EDITOR.....	24
4.1. <i>Main menu - "Database" tab"</i>	24
4.2. <i>Main menu - "Edit" tab"</i>	25
4.3. <i>Main menu - "About" tab</i>	30
4.4. <i>"Database/New Model" tab</i>	30
4.5. <i>Preview tab</i>	32
4.6. <i>Other features of the "User Cabinet Editor"</i>	32
ADDITIONAL INFORMATION	33

Kitchen Cabinet Insert

1. Introduction

The Kitchen Cabinets module can be found in the programs CAD Kitchen, CAD Kitchen Max and CAD Decor Pro.

In CAD Kitchens and CAD Kitchens Max, when a new project is created, a window for selecting a kitchen base is shown (Illustration 1).

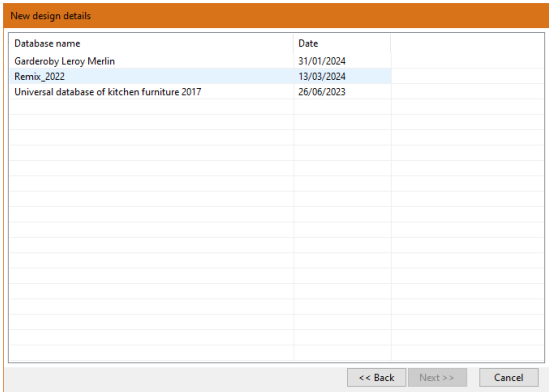


Illustration 1 Kitchen cabinets database selection window

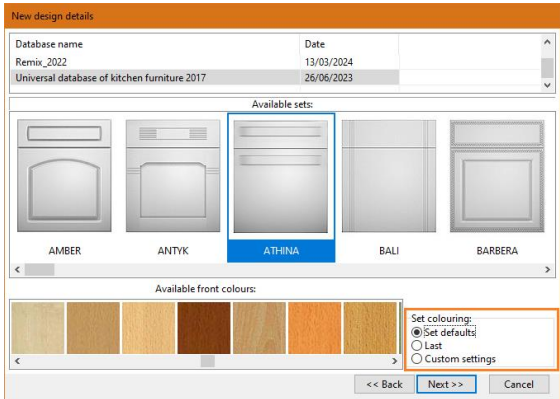


Illustration 2 Set selection in the program

After selecting the base, the **Set Selection** tab opens (Illustration 2). In this window, you can also select the set's color option: **Default Set**, **Last** (last selected color scheme) and **Customization**. After selecting the first two, the program opens a new project. If you select a custom setting, the "Change color scheme" window opens (Illustration 5), which is shown below.

In CAD Decor Pro, after clicking the icon for **"Cabinets"** located on the toolbar in the top menu (Illustration 3), the user is taken to the Kitchen Cabinet Insert module. If this is the first time the Cabinets module is run, the user will be taken to a window where he or she must select one of the available cabinet databases (Illustration 4).

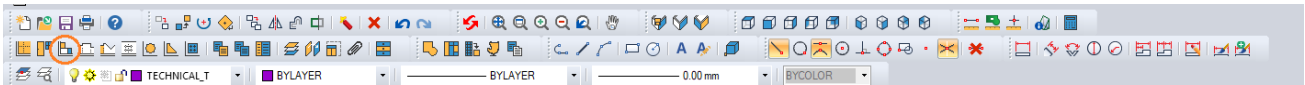


Illustration 3 Top Menu with the Cabinet icon highlighted from Cad Dear Pro

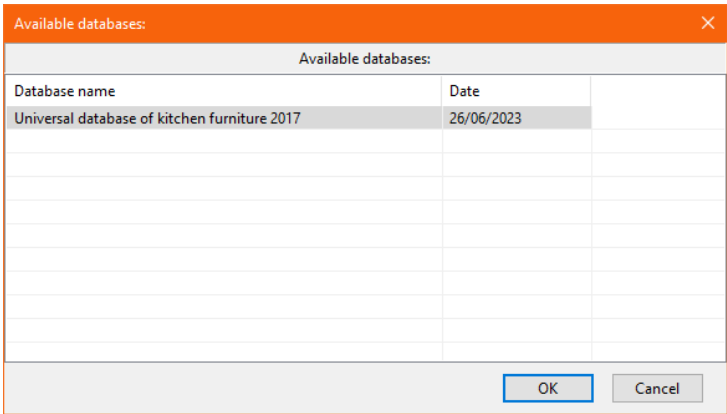


Illustration 4 Kitchen cabinets selection window

After selecting the name of the selected base, confirm the selection by clicking the "Ok" button. The "Colouring change" window will appear (Illustration 5), where you should select a set from the drop-down list (Illustration 6).

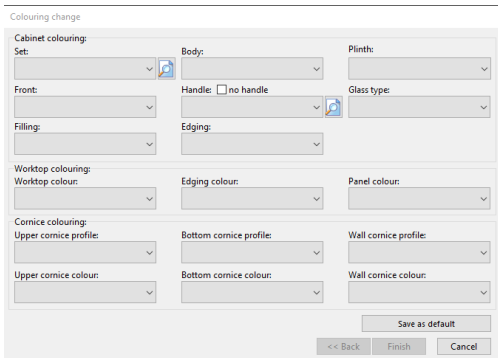


Illustration 5 Choosing a Cabinet Set

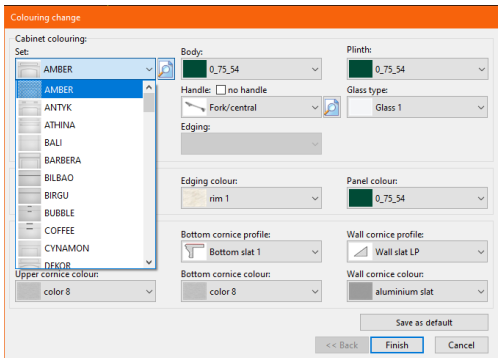


Illustration 6 Selection of a set of Cabinets with an expanded list

After indicating the set, it is possible to choose the color scheme of all cabinet elements (body, plinths, fronts, glass worktops, ,edges, panels, cornice) and the type of handles and molding profiles (Illustration 6 and 7).

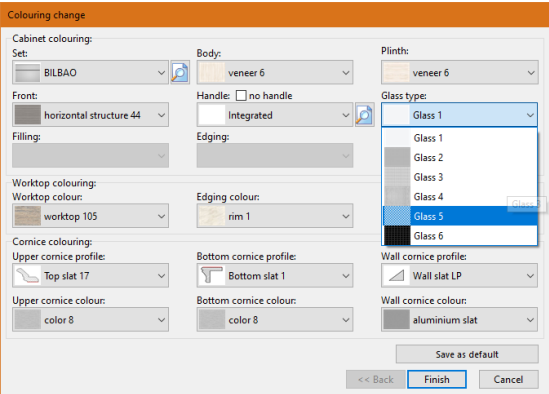


Illustration 7 Selection of colors of cabinet elements

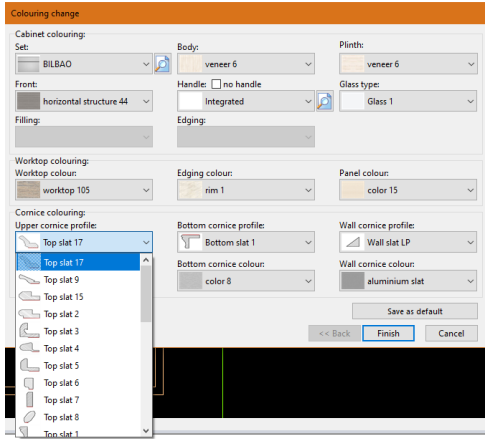


Illustration 8 Selection of colors of cabinet elements

When selecting the color scheme and various cabinet components, you can call up previews of the items marked with the icon - i.e. fronts and handles (Illustration 9 and 10). The previews will appear in the panel on the right side of the window. To hide them, click on the magnifying glass icon again .

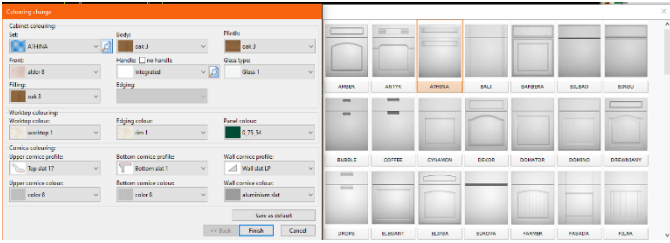


Illustration 9 Front view

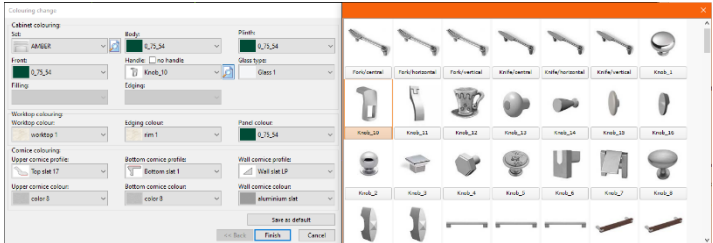


Illustration 10 Handle Preview

To start the design, after selecting and optionally saving the settings as the default for the set (the "Save as Default" button), click the "Finish" button. This will close the "Coloring change" window and automatically open the "Inserting cabinets" window (Illustration 11).

Each time you start the module again, the "Coloring change" window will open.

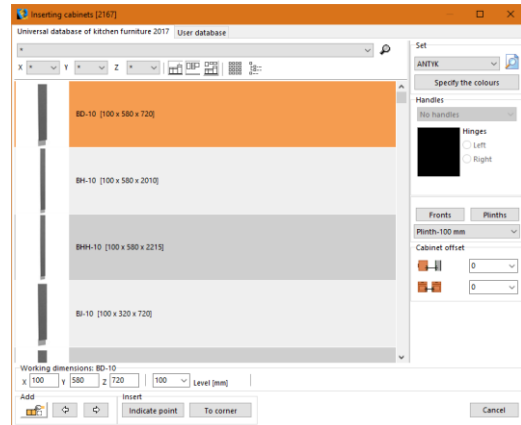





Illustration 11 Coloring change window

2. Set preview

In the "Insert Cabinets" window, you can once again view or change the set that has been selected for the project. To do this, click on the icon  on the right panel of the window in the Sets tab, and then expand the list of available sets (Illustration 12). Below is an option to change the color scheme of the set.

Note: Replacing the entire kitchen set or just its components can also be done using the "Define Set" icon  from the "Interiors 1" bar on the taskbar, which opens the "Coloring change window". Changing the sets will also update the project prices.

3. Preview of cabinets included

The cabinets can be viewed in two ways. To switch from one view to the other, select the  or the  "Change View". The first is a preview gallery of all cabinets without descriptions (Illustration 12). The second type of preview is the display of the cabinets with descriptions (Illustration 13)

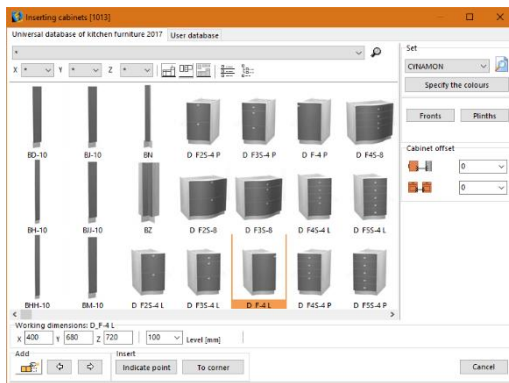


Illustration 12 Cabinet gallery

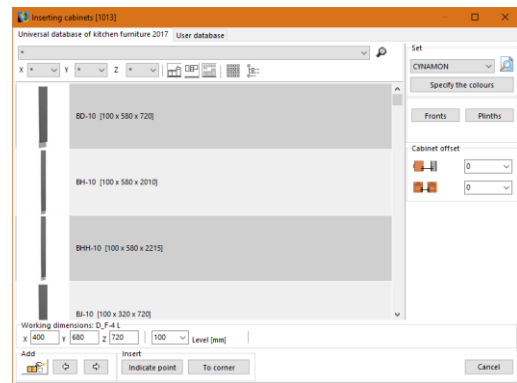





Illustration 13 Preview of cabinets with their descriptions

4. Cabinet Selection

4.1. Filters

With the main filter (Illustration 14), you can select cabinets from a specific group into which the selected set has been divided. The main filter is located at the top of the window and allows you to select, among other things, base cabinets, wall cabinets, medium cabinets, bookcases, etc. You can also apply a filter to show only "bottom cabinets" , "upper cabinets"  or "basic cabinets" .

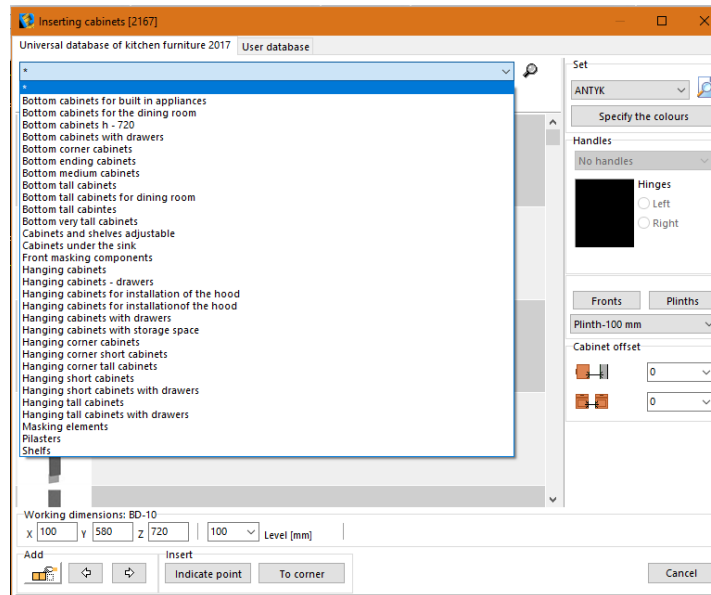


Illustration 14 Filter cabinets by type

Note: The cabinet preview and set filtering functions can be combined. This makes it quicker and easier to find a specific cabinet in the database.

4.2. Browse cabinets by size

Cabinets can also be sorted by specific dimensions. At the top of the "Inserting Cabinets" window, there are coordinates based on which you can search for cabinets with specific dimensions. You need to select the dimensions of the cabinets you are looking for in the X, Y, Z fields, and their previews will appear in the window (Illustration 15 and 16).

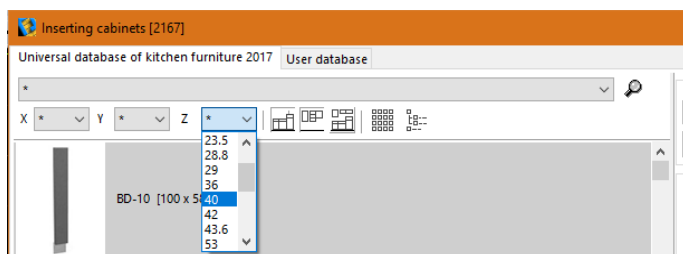


Illustration 15 Filter cabinets by size

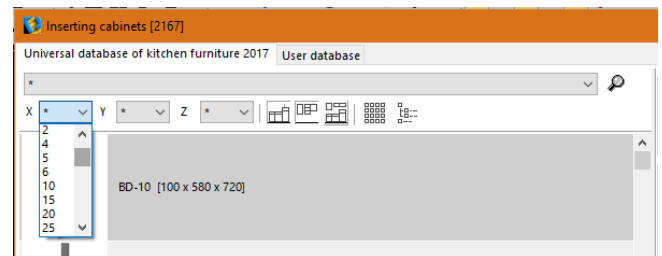


Illustration 16 Filter cabinets by size

Note: The dimensions of cabinets in the X, Y, Z axes can be changed during insertion - a given model will be inserted with changed dimensions. This does not cause any changes to the base, but it may cause distortion of the shape of the fronts and handles if the change in dimension in the X,Y,Z axes exceeds the value of 10% of the initial dimension of the cabinet.

4.3. Searching for a specific cabinet model

If the user knows the name of the cabinet they are looking for, they can use the search function or keyboard shortcut [Ctrl + F] (Illustration 17).

In the "Searching" field, enter the first letters of the code of the item you are looking for, or the whole code (the "Match whole words only" option) of the cabinet you want to find. If the user knows the full name, he can enter it directly in the "Inserting cabinets" window, without using the search option.

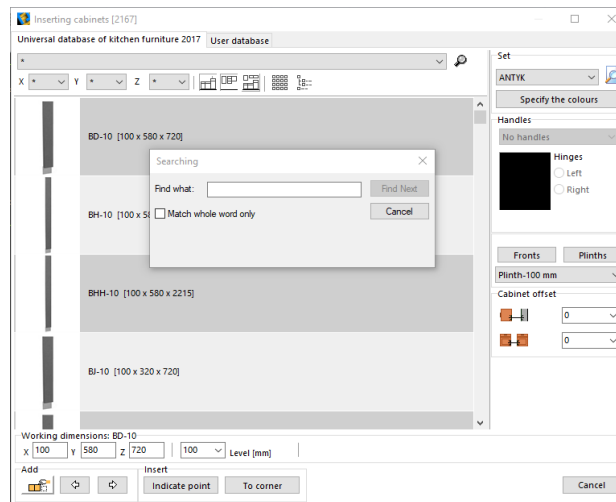


Illustration 17 Filter cabinets by size

4.4. Selection and review of additional cabinet components

While working on the project, the "Inserting Cabinets" window also allows reviewing and supplying additional cabinet elements, such as handles and selecting for a specific cabinet hinges (left or right), plinths or legs (only for selected bases). To add an additional plinth to the inserted cabinet, click on the "Plinths" button, select the appropriate one and mark it (Illustration 18). In some manufacturer bases there is an option to add an additional front.

The procedure for handles is similar. (Illustration 19).

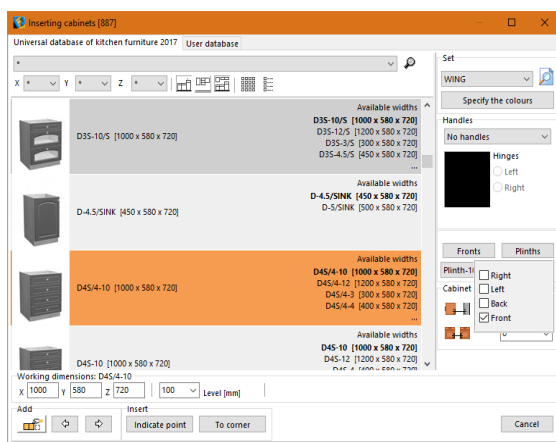


Illustration 18 Inserting an additional plinth

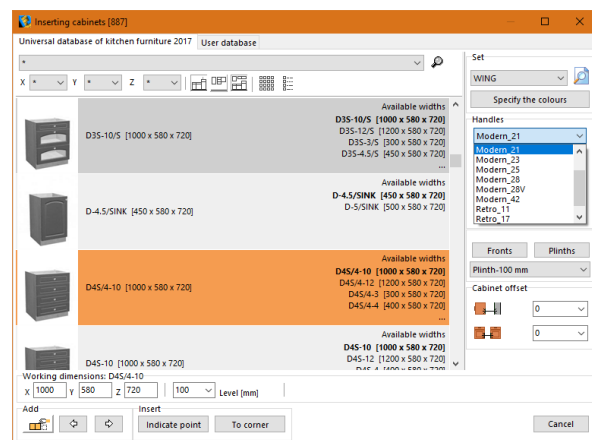


Illustration 19 Inserting Hndles

Note: The ability to install handles is dependent on the cabinet base settings. In certain cabinet models, handle installation may not be possible.

5. Insert Base Cabinets

The insertion of cabinets follows four rules:

- "Indicate point" (user-specified point where the cabinet will be inserted),
- "To corner" (the user indicates the wall at which the cabinet is to stand, and the program places it precisely in the corner),
- "Add to Last,
- "Add to the left/right".

During insertion, you can modify the selected dimensions of the cabinets you place in the project. Details of the use of each method are described in the subsections on the following pages.

5.1. Inserting the first cabinet based on the "Indicate Point" function"

To insert a cabinet in this way, you need to:

- choose a cabinet to insert,
- if necessary, you can change its dimensions (width, depth and height), which are shown at the bottom of the "Inserting Cabinets" window (Illustration 20),

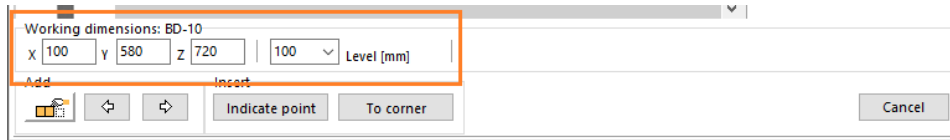


Illustration 20 Working dimensions of the cabinet

- determine the height of the plinth in the "Level" field and press the "Indicate point" button (Illustration 21),
- with the left mouse button, indicate in the design the place where the cabinet is to be inserted and set the angle of rotation, when inserting should be enabled point "attachment to the end point".
- use the left mouse button to confirm the location of the cabinet insertion.

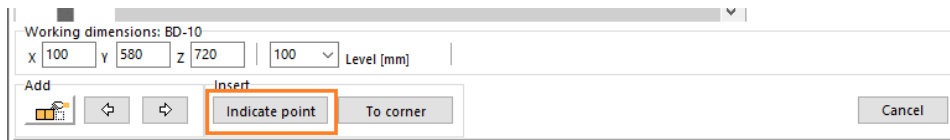


Illustration 21 Indicate Point

5.2. Inserting the first cabinet based on the function "To corner"

To use:

- select the appropriate cabinet and - optionally - change its dimensions,
- set the height of the pedestal in the "Level" field,
- press the "To corner" button (Illustration 22),

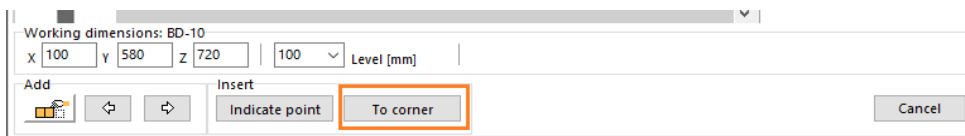


Illustration 23 Indicate Point

- into which corner the cabinet will be inserted depends on which wall you point to (by clicking on its top or bottom edge) or which corner of the wall you point to (Illustration 23).

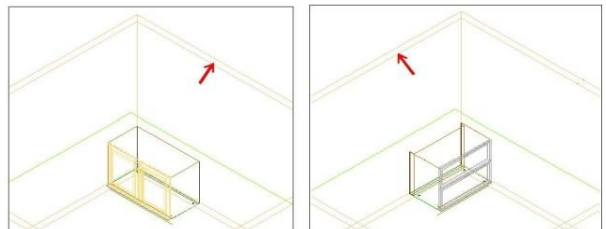


Illustration 22 Insertion of the cabinet based on the function "To corner"

5.3. Adding more cabinets

- **First method**
 - at the bottom of the "Inserting cabinets" window there is a taskbar,

- select "Add to Last"  (Illustration 24),

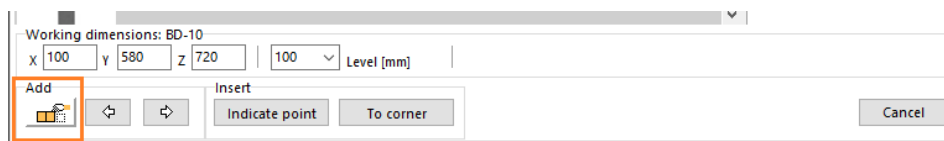






Illustration 24 Add to last

- if another cabinet is to be inserted from the right side of an already inserted cabinet, click the button  "add to right" in order to insert a cabinet from the left side, select the button  "add to left",
- the cabinet will be delivered from the selected side of the last inserted cabinet.

▪ Second method

- click on the button  "add to left" or  "add to right", depending on which side
- already inserted cabinet is to be added another one (Illustration 25),

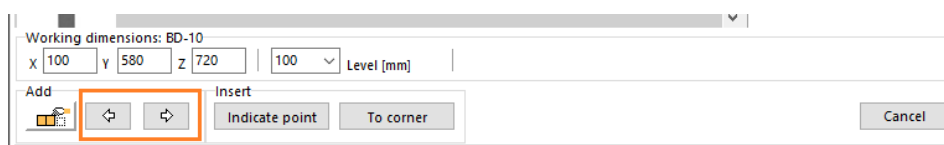


Illustration 25 Insertion- arrows

- click on the edge of the inserted cabinet to which the new one is to be added,
- another cabinet is added to the cabinet already existing in the project on the side indicated by the arrow.

Note: The first method of cabinet supply, described in section 5.3, automatically supplies cabinets in the direction indicated by the user. The program remembers the last inserted object. For example, if cabinets were inserted from the right side, the 'deliver to last left' function cannot be used because the program considers the last cabinet to be the one that was inserted on the right side, resulting in duplicated cabinets. To change the direction of cabinet insertion, turn off the 'Deliver to last' option and proceed with method two.

6. Inserting cabinets with household appliances

Some of the cabinets are designed for the insertion of built-in household appliances. Each such cabinet has a special marking indicating what type of equipment it is designed for (e.g., Sink), and a "Home appliance selection" button appears next to it. After selecting it, the "Selection of built-in household appliances for cabinets" dialog box opens, containing a list of appliances provided for a given cabinet model (for tall cabinets there may be several, such as an oven and microwave) (Illustration 26).

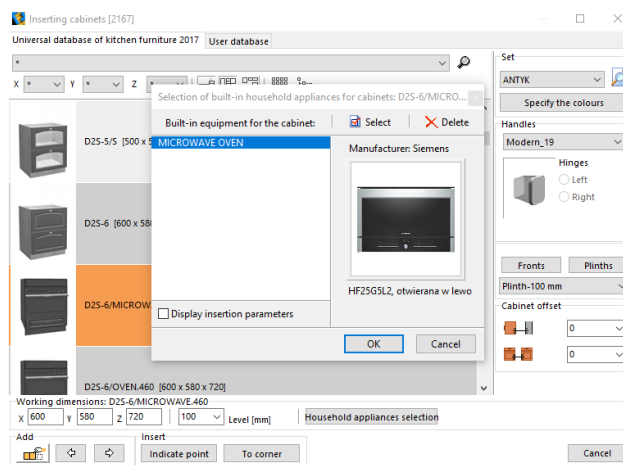
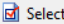


Illustration 26 Selection of household appliances for inset cabinets in the project

Insertion of household appliances:

- double-clicking with the left mouse button on the selected item in the list takes you to the household appliance module, where you can make a model selection,
- the same result will be given by pressing the "Select" button  Select
- the next step is to find the right appliance model (make sure that the dimensions of the cabinet match those of the appliance - you can check them in the description on the left side of the appliance module window or in the installation diagram) (Illustration 27),
- click the "Insert" button,
- the program will return to the " Selection of built-in household appliances for cabinets" window, where you will see a preview of the new model (Illustration 28),

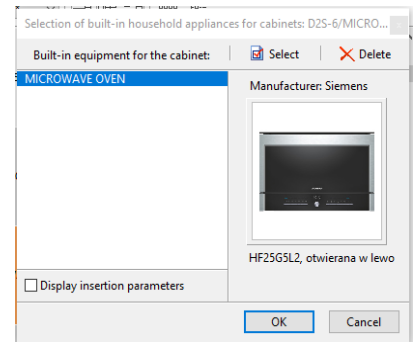


Illustration 27 Selection of household appliances for inset cabinets in the project

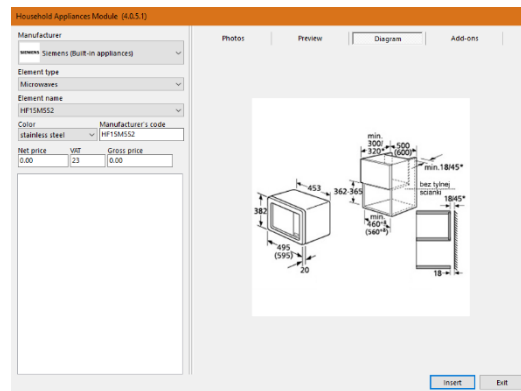



Illustration 28 Selection of household appliances for inset cabinets in the project

- to confirm the selection, click "Ok",
- You can also remove the object from the list for insertion or cancel the entire action,
- after approval, the user is taken back to the "Inserting cabinets" window - after selecting the method of insertion, the cabinet will be placed in the project with the selected household appliance.

Note: The insertion of household appliances is described in detail later in the part of this manual.

7. Inserting hanging cabinets

Wall cabinets are inserted in the same way as bottom cabinets (Illustration 39):

- select the icon  "Cabinets" from the Icon Menu, the "Inserting Cabinets" window will appear,
- from the filter, choose the category of upper cabinets, and then select the cabinet,
- choose the handle for the cabinet and the type of hinges - left or right,
- determine the level of the cabinet insertion,

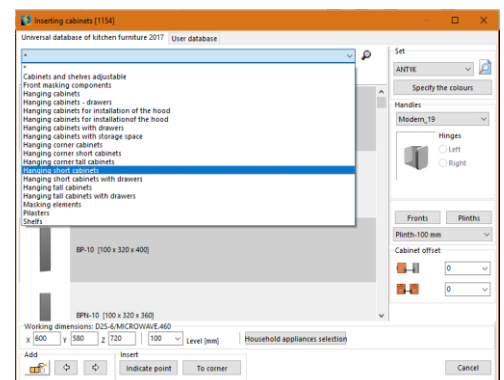


Illustration 29 Choice of upper cabinets for insertion

- the drop-down list offers several standard height options to choose from (Illustration 30),

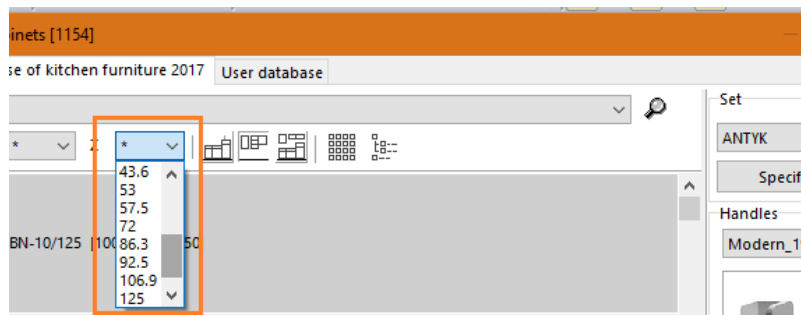


Illustration 30 Choice of upper cabinets for insertion

- the user can also specify the height himself by entering the desired value in the "Level (mm)",
- you can also change the dimensions in the X, Y and Z axes,


Note: If the change in dimension in the x, y, and z axes exceeds 10% of the initial dimension of the cabinet, it may cause distortion of the shape of the fronts and handles.

- after setting the parameters, choose the insertion option - "To corner" or "Indicate point",
- depending on the selected option, point the cursor to the corner of the wall where you want to hang the cabinet or to the insertion point and set the angle of rotation of the cabinet (the outline of the cabinet visible in the design changes its position analogously to the movement of the mouse),
- when the cabinet is in the correct position, click the left mouse button to confirm; the cabinet will be suspended at the height set by the user.



7.1. Adding more hanging cabinets

- First method**

Inserting more wall cabinets is done in the same way as for bottom cabinets, added to the last inserted one:

- in the "Inserting cabinets" window, indicate the selected wall cabinet,
- the system remembers the suspension level of the previous cabinet - so you don't have to define it each time,
- click on the button  "Add to last",
- depending on whether the cabinet is to be inserted to the left or right of the previous one, click on the button marked with arrows facing left or right.

- Second method**

Cabinets can also be inserted using buttons  "add to left" or  "add to right". To do this, you need to:

- indicate with the cursor the cabinet to which the next one is to be added,
- the selected cabinet will be added to it,
- proceed in a similar manner with subsequent cabinets.

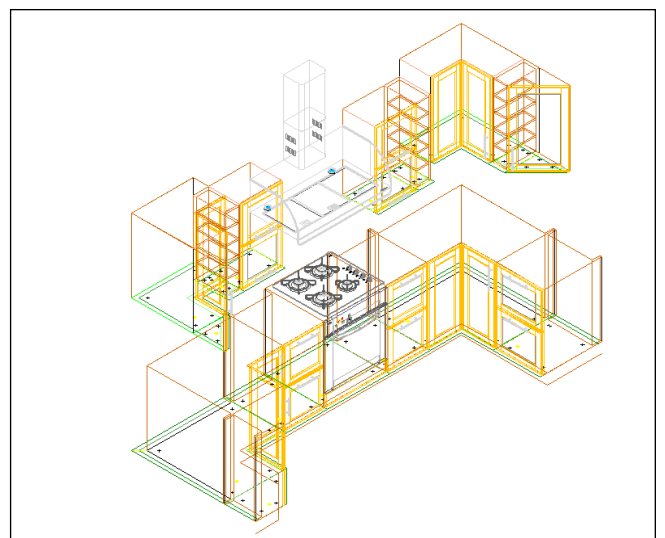


Illustration 31 Kitchen cabinets inserted in the project

8. Additional cabinet placement parameters

When inserting cabinets using any method, it is possible to define a specific value for the offset of the cabinet from the wall, as well as the offset of the cabinet from the neighbouring cabinet. To determine the offset value, click on the offset edit box, which is located under the plinth selection button (Illustration 32).

The first edit field of the offset value defines the offset from the wall, the second defines the offset from the previous cabinet. When determining the offset of a cabinet, you can use ready-made values, as well as enter your own parameters by clicking in the edit field and typing the desired value. For example, to have the cabinets offset from the wall by 100 mm, select the appropriate value from the drop-down list (Illustration 33).

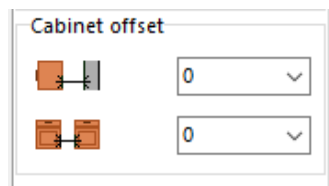


Illustration 32 Cabinet offset

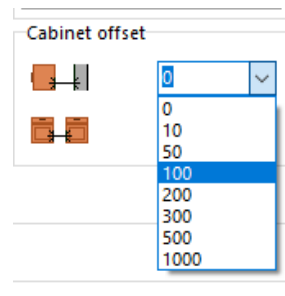


Illustration 33 Offset from wall 100 mm

Then insert the cabinet using any of the methods discussed earlier. The cabinet will be inserted at a distance of 100 mm from the wall (Illustration 34).

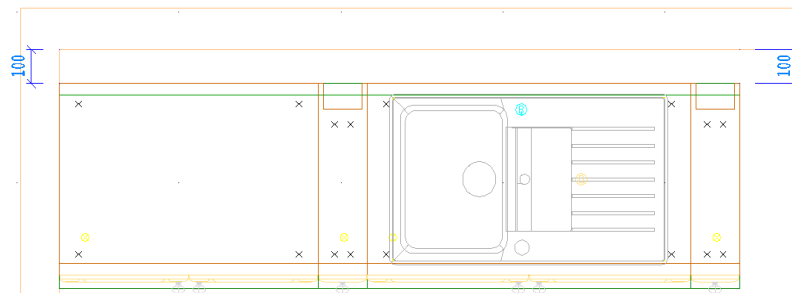


Illustration 34 Cabinets inserted 100mm from the wall - each successive cabinet has the same offset value

When inserting subsequent cabinets, the program will position them at the same distance from the wall as the first cabinet - unless the user changes the offset value. The same principle is used to insert cabinets with a certain offset value from the previous cabinet.

9. Automatic auxiliary dimensioning

When inserting cabinets by any method, the program automatically displays an auxiliary dimensioning (Illustration 35), which makes it easier to insert more cabinets.

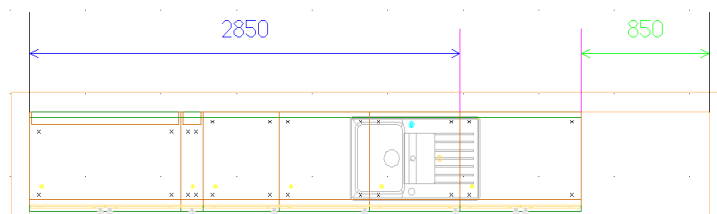


Illustration 35 Auxiliary dimensioning

The auxiliary dimensioning is generated based on the currently inserted cabinet and disappears when the project is refreshed. Individual dimensions are shown using different colors:

- **blue** - determines the distance from the current cabinet to the wall opposite to the side where the cabinets are inserted,
- **green** - determines the distance left to insert more cabinets,
- **red** - specifies the same distance as green, however, turning green into red means that the cabinet you intend to insert next will not fit (Illustration 36).

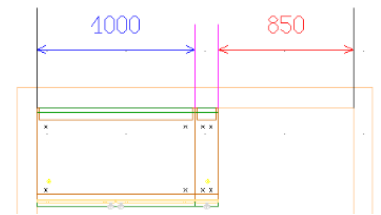


Illustration 36 No space to insert a cabinet width, exceeding 850mm

Automatic auxiliary dimensioning also appears when editing cabinets.

10. Cabinet Edition

Each of the inserted cabinets can be edited. To do so, please:

- select by click or area the cabinet to be edited,
- right-click to bring up the pop-up menu (Illustration 37) and select the "Edit" function from it,
- the "Cabinet edition" window will appear (Illustration 38),

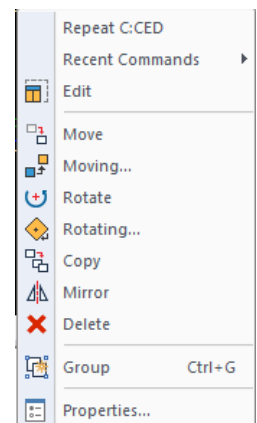


Illustration 37 Expandable menu

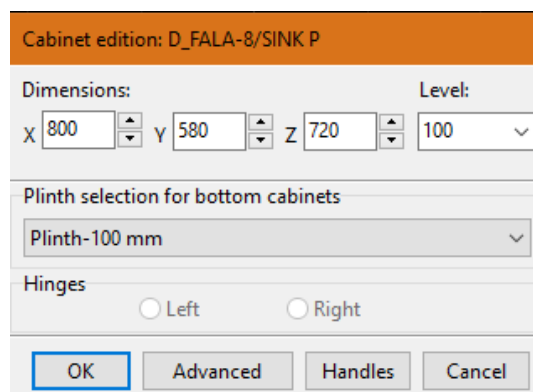


Illustration 38 Cabinet edition

- in this window you can change the basic parameters of the cabinet: width, depth, height, insertion level and position of the hinges (left or right),
- If the changes are to be made, accept them by clicking the „OK” button.

Here you can also go to advanced editing of items. To do this, select the "Advanced" button, which will bring up the "Inserting Cabinets" window, where you can make the following changes:

- width, depth and height modifications,
- changes in the level of cabinet insertion,
- change of left or right hinges,
- replacement of handles with other ones,
- adding or subtracting plinths,
- add or subtract fronts (applies to selected bases),
- cabinet swaps within a single set,
- swapping cabinets within two different sets.

To make changes, you must approve them by clicking on the **"Change"** button.

From the cabinet editing position, you can also edit the handles. This is done with the "Handles" button, after clicking on which a new window will appear (Illustration 39).

In the **"Handle edition"** window, select the handle. to be modified (the selected handle will be highlighted in green in the project), and then you can move the handle - horizontally or vertically, and rotate the handle - by multiples of 90° or by any defined angle.

After making changes to the position and rotation of the handle, select the **"Confirm changes"** button.

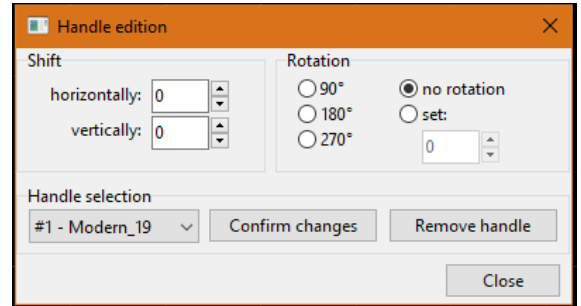



Illustration 39 Handle edition

Home appliances

1. Introductory remarks

Icon  "Home Appliances" is located on the "Interiors 1" bar. It opens the „Household Appliances” module (Illustration 40) and allows you to insert 3D models of built-in or free-standing appliances from the databases of home appliance manufacturers, either included in the program or made available on our website. They will find catalog listings from many well-known brands, along with previews, technical descriptions, installation diagrams and suggested prices, as well as, optionally, provided add-ons for the product.

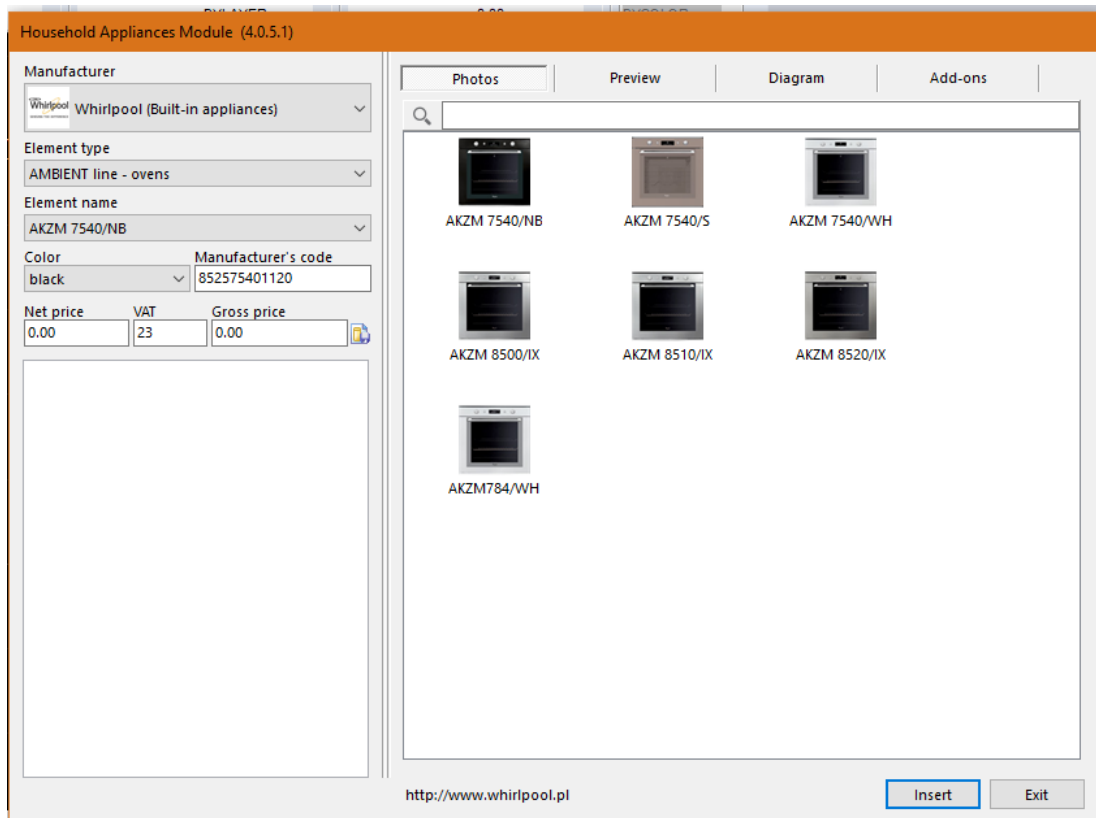


Illustration 40 Appearance of the household appliances module window

2. Design of the household appliance module

In the "Manufacturer" field, you can select a brand from the bases included in the program (Illustration 41).

The "Element type" field is for selecting a specific group of models, such as only sinks or only cooker hoods (Illustration 42). After selecting the manufacturer and the item type, indicate the specific model (by selecting it in the "Element name" field or based on the photographs, located on the right side of the window) by clicking on it.

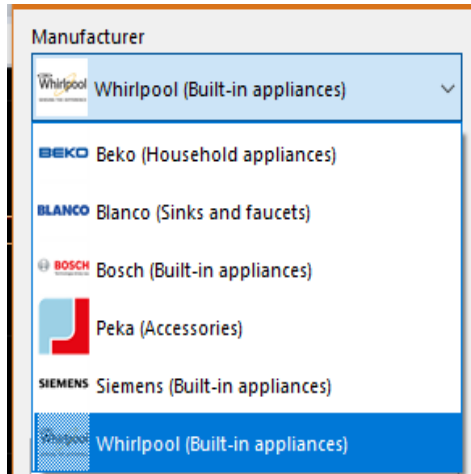


Illustration 41 Manufacturer Selection

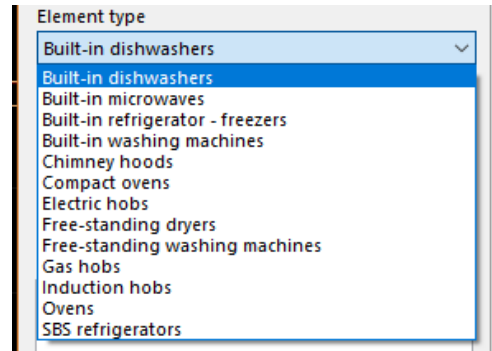


Illustration 42 Element type selection

Every model has:

- manufacturer code, prices (net and gross) and catalog description,
- optional: color scheme (in the "Color" field and under the illustration of the equipment),
- preview (allowing you to view the model in higher resolution– Illustration 43),
- installation diagram of the device (Illustration 44),
- optional: add-ons that can be inserted together with the equipment (Illustration 45).

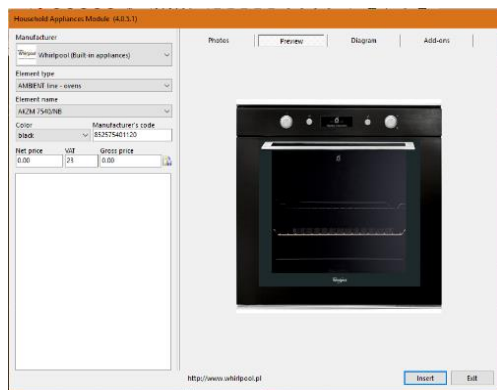


Illustration 43 Element preview

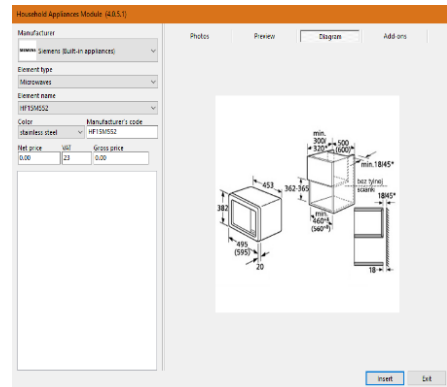


Illustration 44 Installation diagram of the device

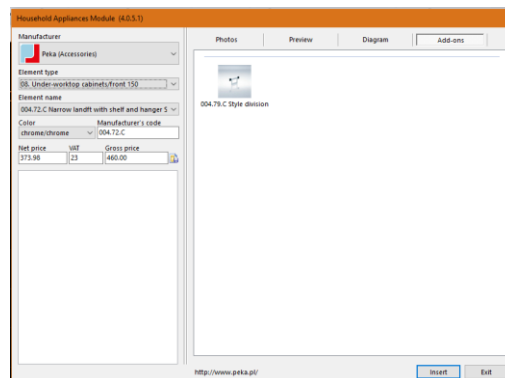


Illustration 45 Add-ons for household appliances

3. Sinks and hotplates installation

To install this type of equipment, follow these steps:

- choose a model of sink or hotplate,
- in case more than one color is available for the model, you can indicate one of them - the inserted element will have the selected color,
- you can select the accessories to be inserted with the equipment, if the manufacturer has provided for them,
- then click "**Insert**",
- "**Element in the worktop**" window (Illustration 46) appears, where you can set the parameters for inserting the element:
 - **x, y** - offset from the side/back of the cabinet,
 - "**Center horizontally**" - the program inserts the model exactly in the center of the cabinet,
 - „**Auto level**" - The height at which the item will be placed is measured by the program, the user does not need to invoke any additional operations; however, the level can be changed by entering a new numerical value (in millimetres) in the appropriate edit field,
 - „**Set rotation angle**" - function useful for elements inserted on corner cabinets,
 - „**Under the worktop**" - function useful for under-counter sinks
- after defining the parameters in the "**Element in the worktop**" window, press the "**Insert**" button, and then indicate with a click the front of the cabinet on which the element is to be superimposed,
- sink or hotplate will be inserted in the project.

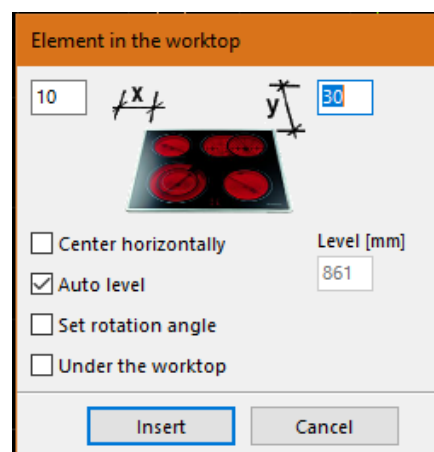


Illustration 46 Window for setting item parameters on the countertop

3.1. Free-standing equipment installation

The process for selecting standalone items is the same as previously described:

- after selecting the equipment, press the "**Insert**" button,
- in the "**Various Elements**" window, set the model insertion level (Illustration 47),
- if the object is to be positioned in a corner, select the "**Set rotation angle**" option and specify the angle value,
- after setting the parameters, click "**Insert**",
- click in the project to indicate where the object should be placed,
- element is inserted.

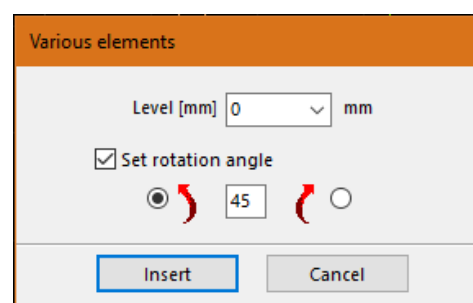


Illustration 47 Various Elements Window

3.2. Inserting faucets into sinks

If the user does not install the provided faucet with the sink (applies to selected bases), they can choose to install it later or select a faucet from another manufacturer's base. To accomplish this, follow these steps:

- search for a battery according to the scheme described above and select the "**Insert**" button,
- indicate with the cursor the sink on which the faucet is to be placed,
- the battery is inserted.

3.3. Installing built-in equipment

Some of the cabinets in the furniture bases have been prepared to insert models of household appliances from specific manufacturers. Each such cabinet has a special marking indicating what type of equipment it is designed for. In addition, a button appears that says " Home appliance selection".

For an already inserted cabinet, you can insert the selected model of built-in appliances. To do this, you need to:

- select the brand, type of component and model, paying attention to the match between the dimensions of the cabinet and the device (available in the description or on the installation diagram) (Illustration 48),
- click "Insert",
- in the project, indicate with a click the front of the cabinet into which the model is to be inserted, such as an oven or microwave oven,
- the equipment is inserted into the cabinet.

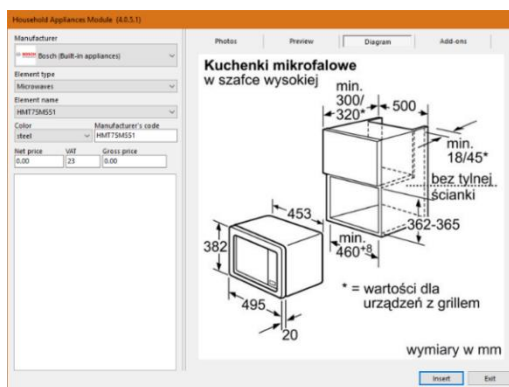


Illustration 48 Choosing built-in household appliances

If a cabinet is adapted to accommodate two appliances (it has two slots, i.e. empty spaces for an oven and a microwave, for example) in user-created cabinets, you can decide which appliance will be placed where by indicating its level in the window that opens when inserting household appliances (Illustration 49). Once you indicate the front of the cabinet with a click, the equipment will replace the default dummy, appearing at the selected level (Illustration 50).

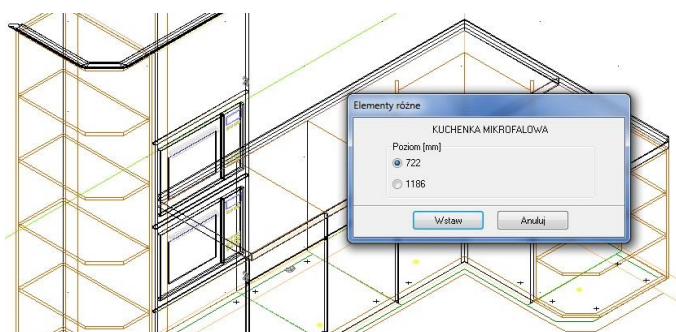


Illustration 49 Insert household appliances from the base - level selection, two default dummies visible

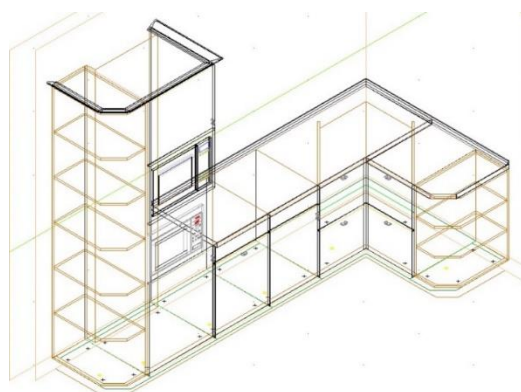


Illustration 50 The selected equipment from the manufacturer's household appliance base was inserted at the indicated height (722 mm)

Note: For ovens designed to be completed with hotplates, the plates are inserted using the method described in [section 3 "Insertion of sinks and hotplates"](#).

4. Inserting the hood

To insert a hood into project, you need to:

- search for the appropriate hood model in the household appliance module,
- click on the "Insert" button,
- the "Hood" window appears (Illustration 51);
- default height for inserting eaves is 1540 mm (measured from the floor to the bottom edge of the model),
- the user can change the level by typing a value in the edit box, then insert the model into the design when selecting one of the "Indicate a unit" or "Indicate a point" options,
- in the first case, indicate with a click the cabinet over which the absorber is to be inserted,
- the hood will be inserted in a central position above the indicated cabinet,
- when using the second method, indicate with the cursor the first and last points on the cabinet between which the absorber is to be suspended,
- the hood will be inserted in a central position over the cabinet so indicated.

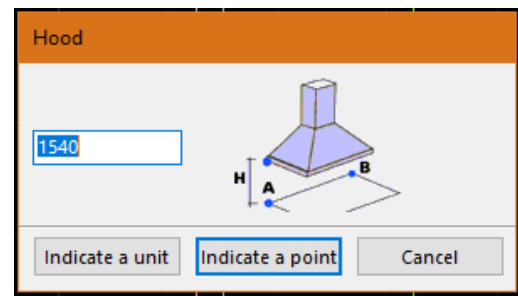




Illustration 51 Window „Hood“

Cabinet Design and Edition Module

1. Introductory remarks

Clicking on the "Cabinet Editor" icon  on the "Interiors 1" bar launches the **Edit and Create Custom Cabinets module**, allowing you to modify existing cabinets and design new ones of your choice.

The CAD Decor PRO software includes this module as standard, while in CAD Kitchens it is an optional add-on.

After selecting the icon  in the "Data edition" window, there are two options to choose from (Illustration 52):

- „ **Kitchen Cabinet Database Editor**" that allows you to edit cabinets from the database,
- "**User Cabinet Editor**" create a new design for any cabinet.

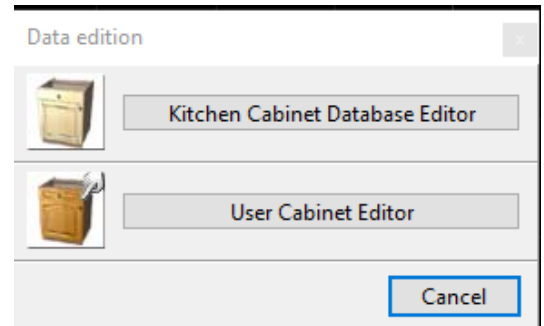


Illustration 52 Cabinet editor window

The "**User Cabinet Editor**" allows flexible 3D modeling for creating any custom cabinets using a very simple and fast parametric method. It involves selecting a cabinet type and setting its parameters. The model is generated automatically. In this way, any number of unusual cabinets, absent from other bases, can be designed in a short time.

2. Kitchen Cabinet Database Editor

The module allows you to edit already existing cabinets, located in the databases installed together with CAD Decor PRO or downloaded from our website.

Options are available for assigning or subtracting cabinets from sets, changing the parameters and data of cabinets, restoring cabinet dimensions throughout the database and editing set names (Illustration 53).

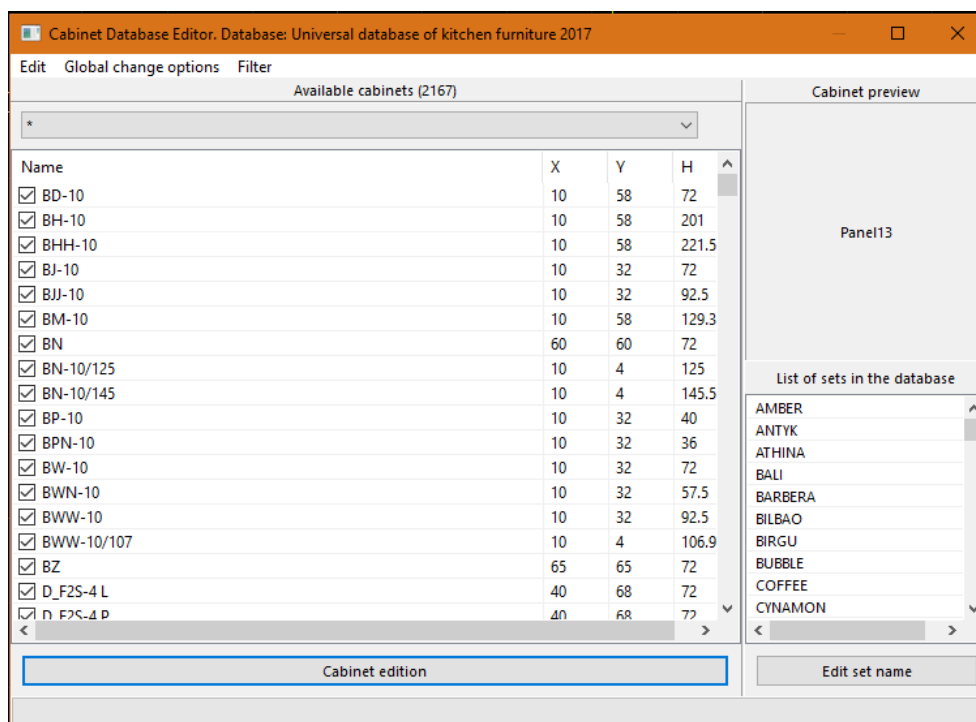


Illustration 53 Kitchen cabinet base editor

3. Top Menu

"Edit" tab - one option is available here: "Search". It allows you to find a cabinet in the database for editing after entering the cabinet symbol (Illustration 54). The function is also available under the keyboard shortcut **[Ctrl+F]**.

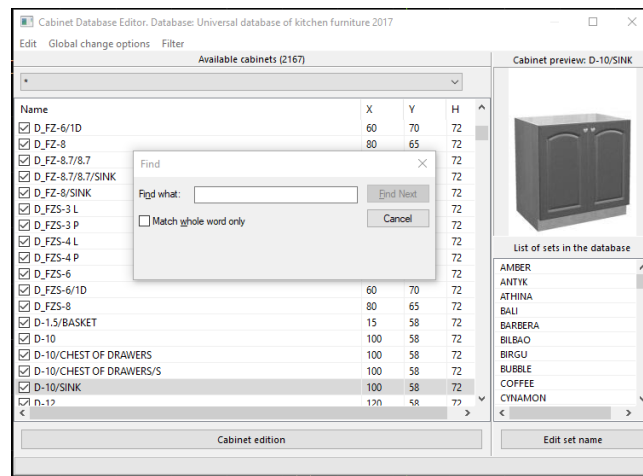


Illustration 54 Cabinet search

Tab "Global change options" - available functions:

- „**Select/Deselect all sets for all cabinets**“: assigns or subtracts all base cabinets from all sets.
- „**Quick assignments**“: assigns the selected cabinets to the indicated sets. After entering the assignments, confirm the changes with the **"Enter changes"** button (Illustration 55).
- „**Restore default cabinet dimensions**“: restores factory parameters to cabinets across the base.

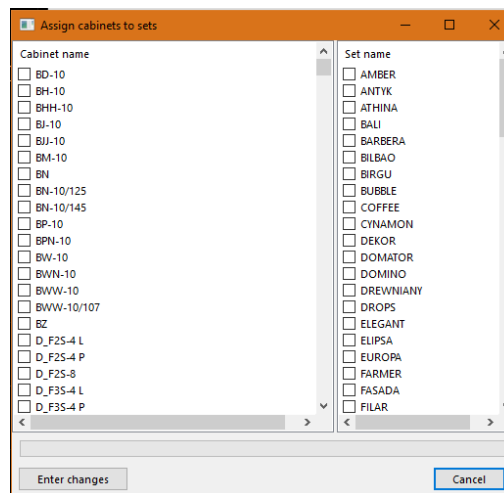


Illustration 55 Assigning cabinets to a set

"Filter" tab - the option **"Show unused cabinets"** is available there - if selected, unused cabinets will be displayed.

3. Other features of the "Cabinet Base Editor"

"Available cabinets" field - contains all cabinets included in the selected base (Illustration 56).

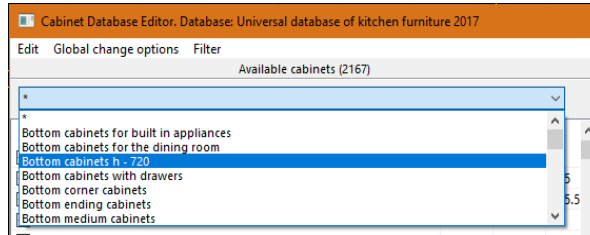


Illustration 56 Field "Available cabinets - list of cabinet categories in the database"

Cabinet filter - thanks to the filter, you can select a specific group of cabinets for display, such as only fascia fronts, base cabinets, etc.

Preview - clicking on the selected cabinet in the list displays its preview in the upper right corner of the "Cabinet Base Editor" window (Illustration 57).

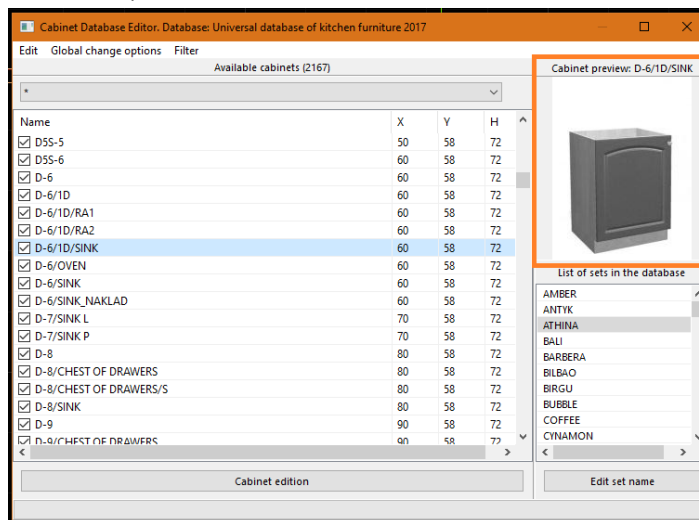


Illustration 57 Cabinet preview view

"Cabinet edition" button - available functions are:

- cabinet name change,
- assigning a cabinet to another group of cabinets, available in the database filter,
- addition or subtraction of cabinets from the basic group,
- changing the dimension of the cabinet,
- assigning the cabinet to selected sets (Illustration 58).

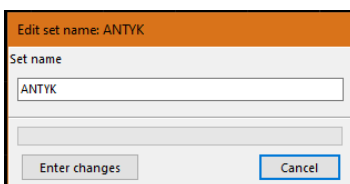


Illustration 59 „Edit set name” window

"Edit set name" button

Each of the cabinet base set names displayed in the "List of sets in the database" can be changed in the window shown in the illustration on the following page (Illustration 59). To do this, first click on the name to be changed and then click on the "Edit Set Name" button. After specifying the new set name in the "Set name" edit box, press the "Enter changes" button to approve the modification.

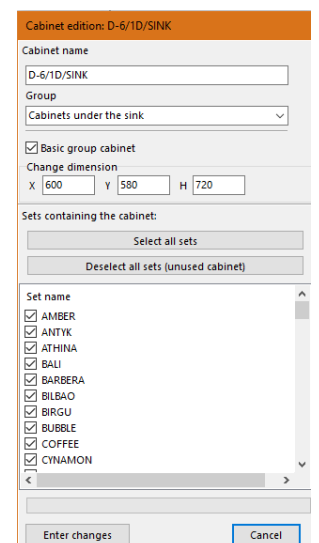


Illustration 58 Cabinet editing window

4. User Cabinet Editor

With this module (Illustration 60), users can create their own arbitrary cabinets using a simple 3D parametric modeling method. The cabinets can then be added to their own database and used when creating designs, and they can quickly create lists of their structural elements for the CAD Cut application, where optimal material cutting patterns can be obtained.

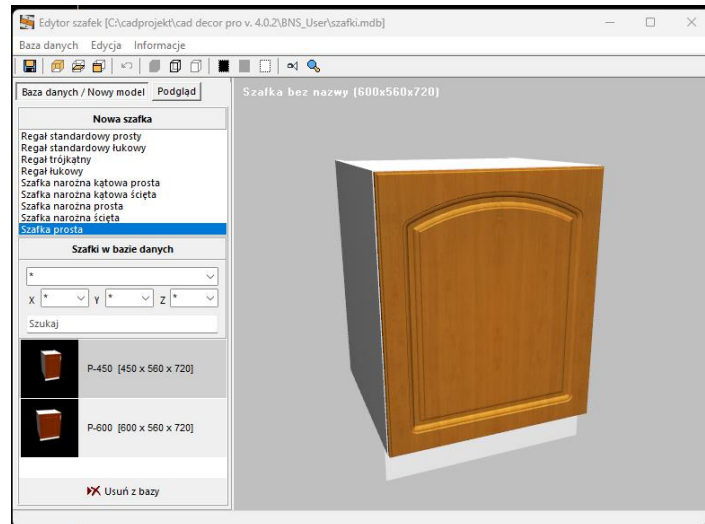


Illustration 60 User cabinet editor

4.1. Main menu - "Database" tab"

After clicking on the "Database" button, a drop-down menu will appear with the following options available: "Save changes made to the cabinet" <Ctrl+S>, "Save cabinet as..." and "Set edition". The first allows you to save the changes made for a cabinet previously saved in the user's database, the second allows you to add a cabinet to the database under a new name. The third function opens a new window "Sets" (Illustration 61).

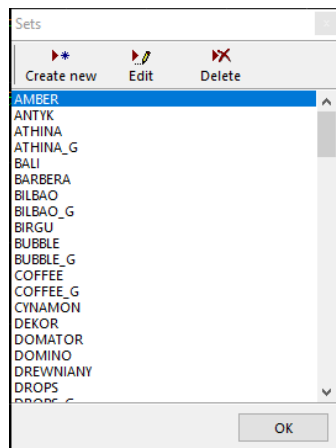


Illustration 61 "Sets" window

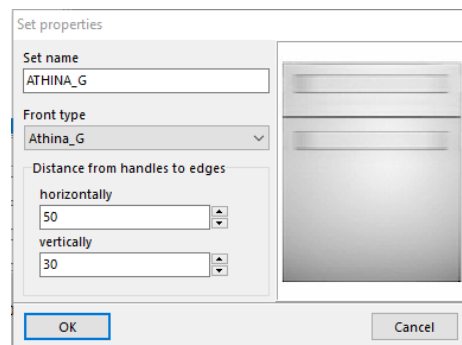


Illustration 62 Edit the set in the user's cabinet database

In this window, the user can add a new set to the cabinet database (using the "Create New" button), change the parameters of an existing set (using the "Edit" button), or remove the selected set from the database (using the "Delete" button). Both of these options open the same window.

The "Set edition" function allows you to change the name of a set, replace the front with another, set a new distance of handles from the edge of the cabinet vertically and horizontally. To do this, after selecting the "Edit Sets" option, indicate on the list of sets with a click the set to be edited, and then in the newly opened "Set properties" window change the selected parameters (Illustration 62).

4.2. Main menu - "Edit" tab

Clicking on the second tab of the main menu of the "User Cabinet Editor" window brings up the following submenu (Illustration 63).

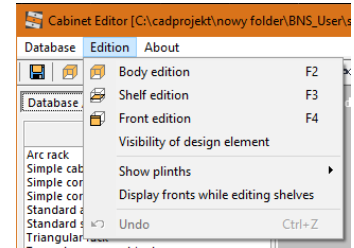



Illustration 63 Functions available in the "Edit" tab

After selecting the first option: "Body edition" (also under the icon  and the [F2] key) opens the "Body parameters" window with four tabs, where you can set any body dimensions (including back thickness) (Illustration 64), specify additional parameters (Illustration 65) and truncations depth (Illustration 66). The last tab contains a summary (Illustration 67).

In the "Dimensions" tab, it is also possible to define the cabinet as a bottom or wall-mounted one, as well as to specify the distance of the cabinet from the wall - in the "Offset from the wall" field.

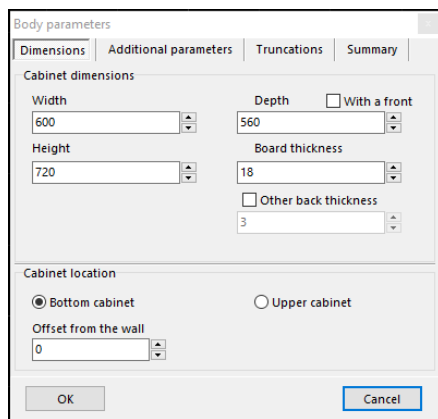


Illustration 64 Changing the dimensions of the body

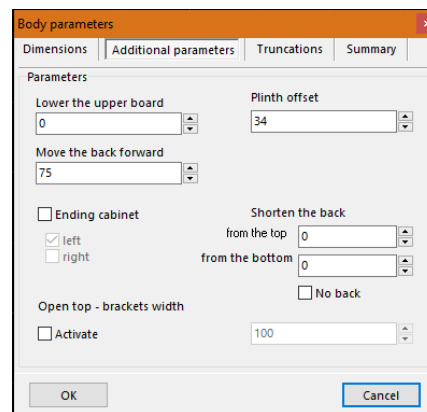


Illustration 65 Additional parameters

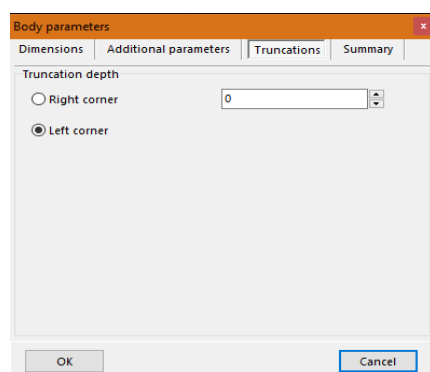


Illustration 66 Truncations depth

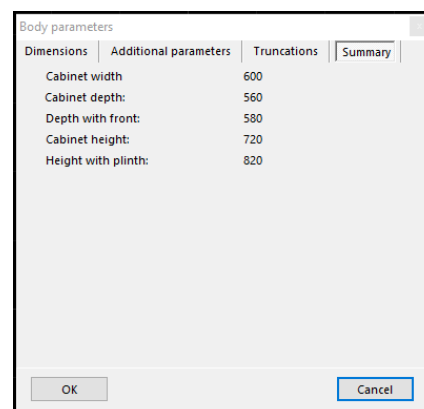






Illustration 67 Summary

The second option under the "Edition" tab is "Shelf edition" (also available under the icon  and [F3] key) (Illustration 68). Allows you to add horizontal and vertical shelves, remove them and edit them, changing the position, setback, thickness and material (plate or glass) (Illustration 69 and 70). The first time you open the "Shelf edition"

window, the list of shelves to insert is empty. To add them, click the button  and complete the required fields in the "Add" window.

To add or remove a shelf you can use the buttons  and  (options also available under the right mouse button, after selecting an item in the list). Orientation (horizontal or vertical) depends on the option selected in the "Type" field.

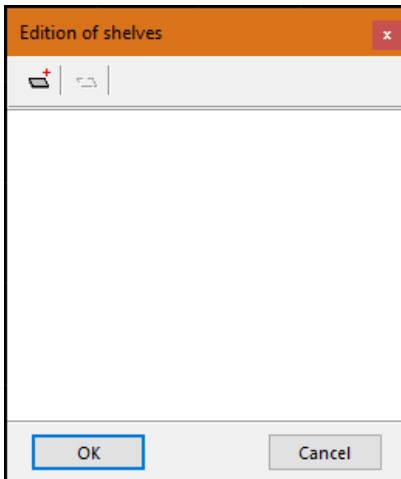


Illustration 68 Shelf edition window

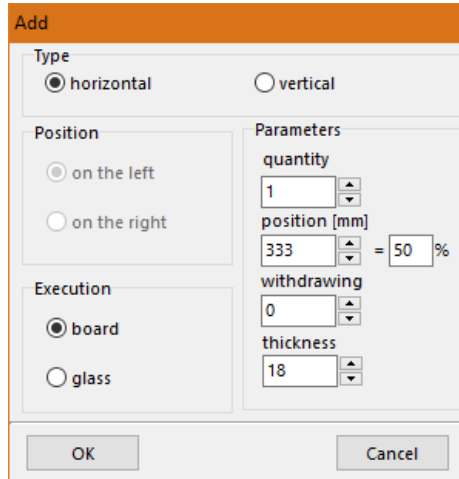


Illustration 69 Adding a horizontal shelf

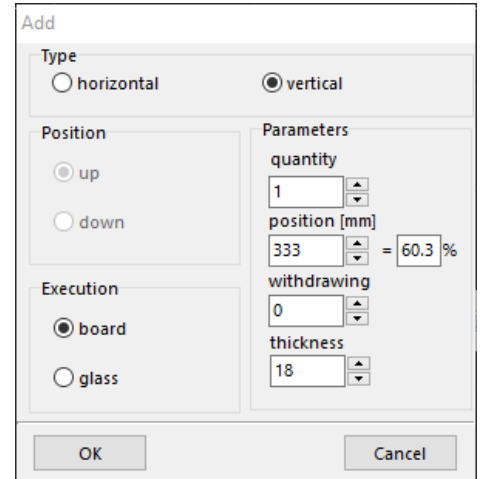


Illustration 70 Adding a vertical shelf

For shelves, it is possible to add more shelves at once (the default is three shelves at a time). Each time you add shelves, they will appear in the list in the "Shelf edition" window. When you click on an item in the list, the corresponding shelf will highlight in red (Illustration 71).

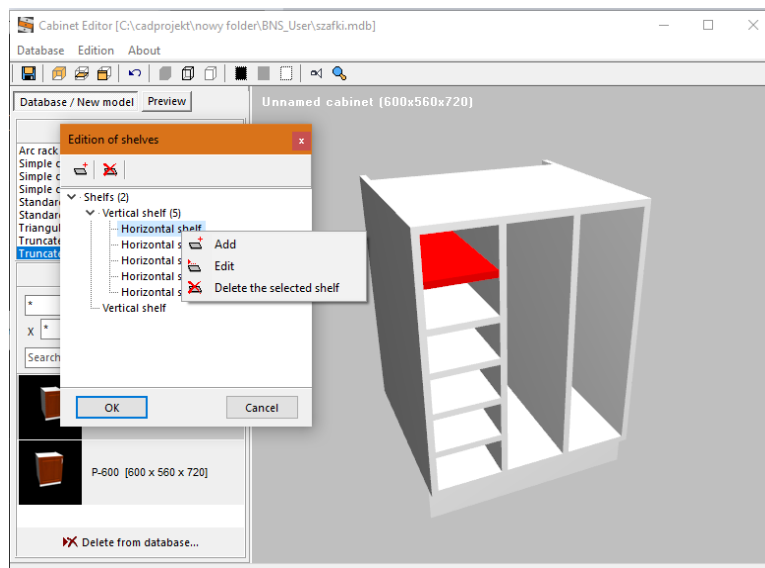





Illustration 71 Shelf edition – adding, deleting, editing

The third function is "Front edition" (also under the icon  and the [F4]).

The first window "Select front for edition" shows the fronts that are active for that cabinet.

In the field "Active fronts" it is possible to select which front (front, back, left and right), will be active for a given cabinet. In the panel next to it, you can define the position of the hinges (undefined - suitable, for example, for drawers, from the left or from the right).

In order to proceed to the actual editing of fronts, indicate with a click the front in the list to be edited (Illustration 72) and click the active button "Edit".

To access the next window, click on 'Edition of fronts' (Illustration 73). To modify a front, simply select it from the list.. The first action is to divide the front panel - vertically or horizontally - using the  or  and in the menu under the right mouse button (Illustration 74).

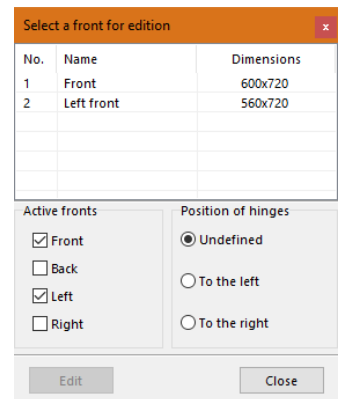


Illustration 72 Selecting the front end for edition

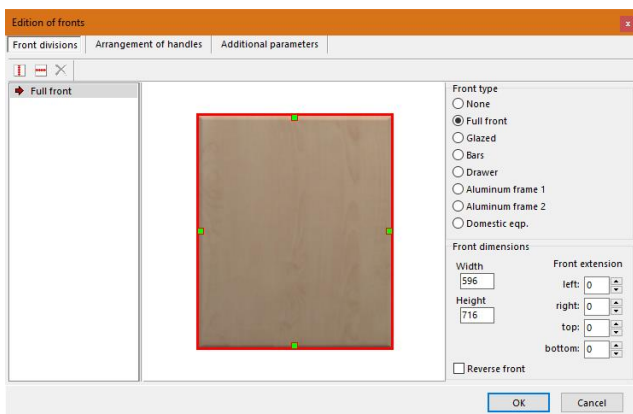


Illustration 73 Edition of fronts

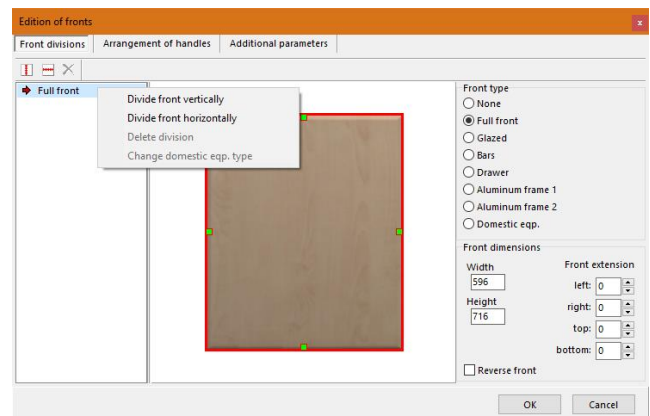


Illustration 74 Front divider functions

Selecting any of these options brings up a new window where you should:

- determine the number of divisions (two or more parts - with a larger number, it should be determined by entering a value in the edit box),
- in case of division into two parts - indicate the place of division of the front - in percentage or in millimetres (Illustration 75 and 76),

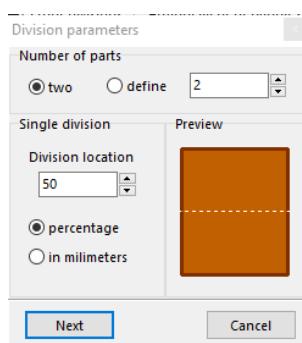


Illustration 75 Parameters of division of fronts horizontally

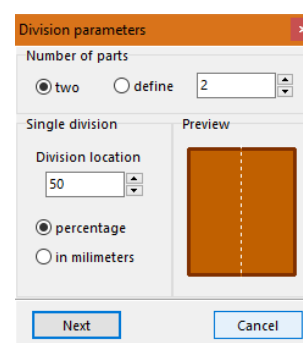


Illustration 76 Parameters of division of fronts vertically

- for more divisions it is impossible to indicate the place of division - it is determined by the program automatically,
- therefore, if the user wants to divide the front into several parts of different dimensions, he must make the divisions one by one,

- the effects of the divisions will be visible on the preview in the central part of the window,
- to remove the front divisions, select the given front group in the list, right-click and select the "**Delete division**" button from the drop-down menu (Illustration 77), and then select "**Yes**" in the message box requesting confirmation of the removal of front divisions in the indicated group (Illustration 78).

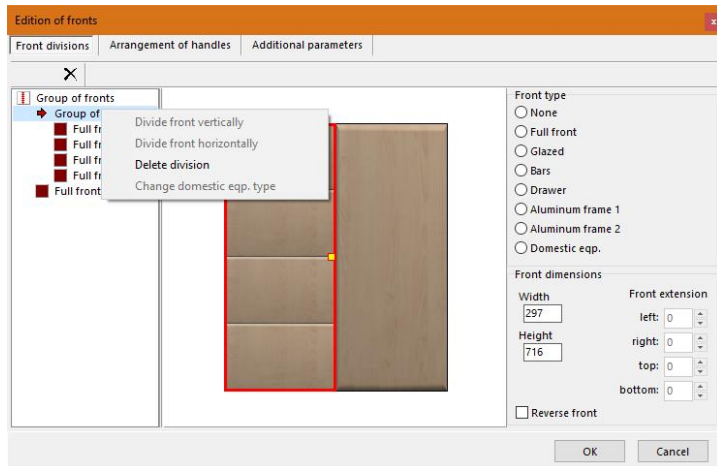


Illustration 77 Deleting the division of the front

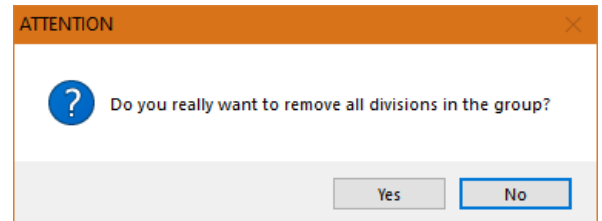


Illustration 78 Message that appears when deleting front division

Once the divisions have been made for each part, you can define the type of front by clicking on the part and selecting the desired type in the box on the right side of the window (Illustration 79).

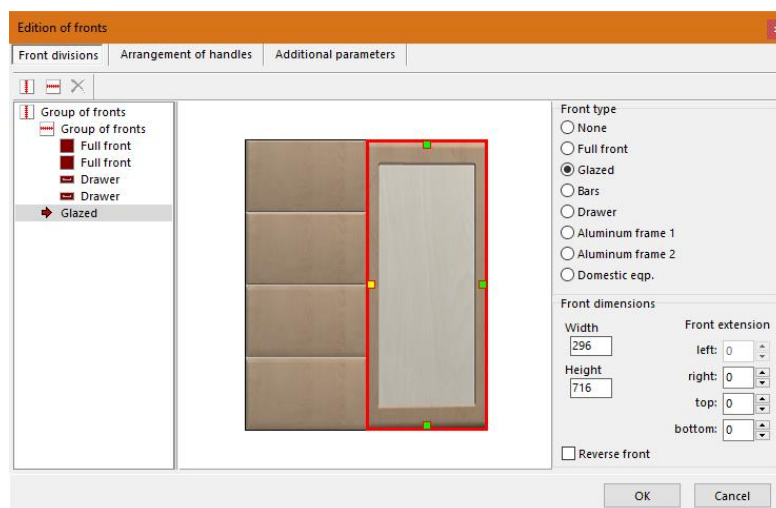


Illustration 79 Selecting the front type for the different parts of the front of the cabinet

You can choose from the following types of fronts: **none** (empty), **full front**, **glazed**, **bars**, **drawer**, **aluminum frame 1** and **2**, **domestic eqp.** (suitable for inserting appliances). After defining a particular part of the front as suitable for household appliances, the user will be asked to specify the type of equipment that is intended for the cabinet (Illustration 80).

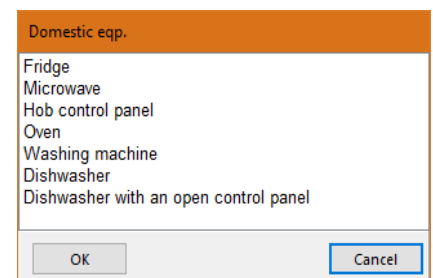


Illustration 80 Choosing the type of household appliances

There are two more tabs in the "**Edition of fronts**" window.

The '**Additional parameters**' tab allows you to set the size of the front plane margins and define the distance between the fronts in a group (Illustration 81).

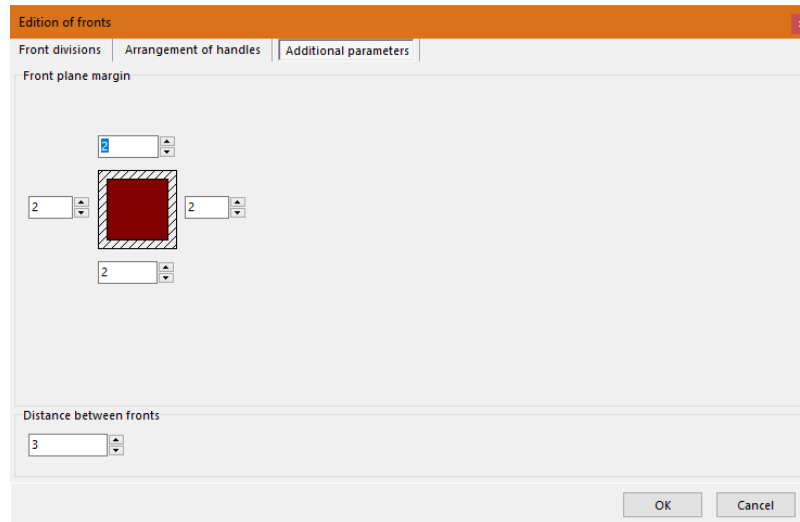


Illustration 81 "Additional parameters" tab

The "**Arrangements of handlers**" tab (Illustration 82) allows you to:

- defining the number and location of handles on the front,
- saving the arrangement of handles in the form of 3 diagrams, which can be used as different options for the same cabinet when working with the project later.

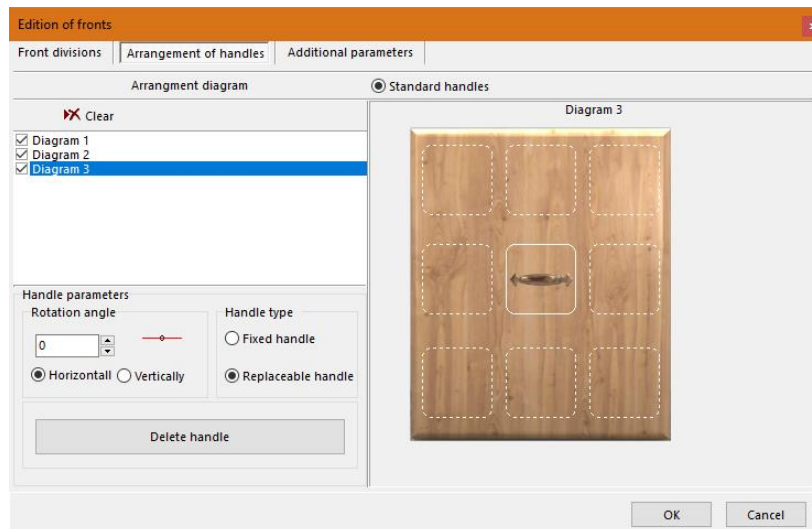


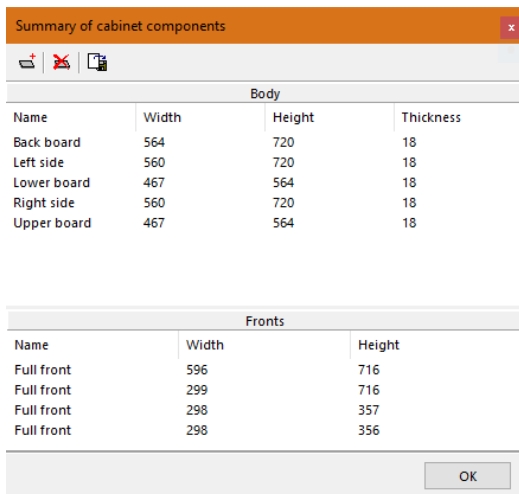
Illustration 82 Defining Handle Arrangements

Handles are placed on the front-end grid by clicking with the left mouse button in the selected field marked with a dashed line. In the "**Handle parameters**" field, you specify the handle rotation angle, handle position (vertical or horizontal) and handle type (fixed or replaceable). You can also delete an already inserted handle using the "**Delete handle**" button. When the user has finished editing a front, he will be returned to the "**Select front for edition**" window, where he can specify the next front to edit. However, if the user has already finished editing fronts, he/she should select the "**Close**" button, which is equivalent to accepting the settings made.

4.3. Main menu - "About" tab

The "About the program" option displays information about the current version of the module.

In the „Summary of cabinet components” the user can generate a list of structural elements of the just-created cabinet and save it to a file format readable by CAD Cut, in which you can then obtain a list of formats for a given cabinet and carry out optimization of their cutting on the available sheets (you can learn more about the CAD Cut add-on module from the separate operating instructions for this module). The listing contains information about the cabinet components, including sides, bottom and top plates, backs, shelves, and types of fronts. (Illustration 83).



Body			
Name	Width	Height	Thickness
Back board	564	720	18
Left side	560	720	18
Lower board	467	564	18
Right side	560	720	18
Upper board	467	564	18

Fronts		
Name	Width	Height
Full front	596	716
Full front	299	716
Full front	298	357
Full front	298	356

Illustration 83 Summary of cabinet components

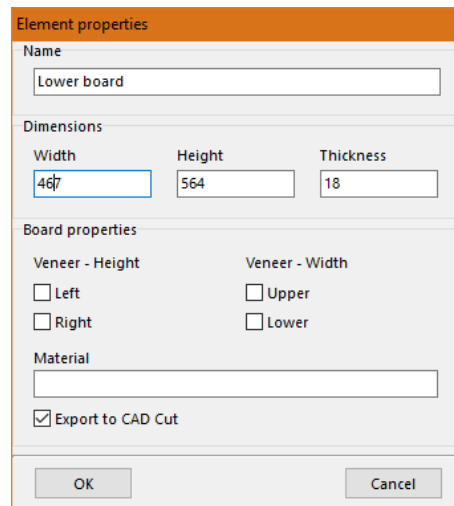



Illustration 84 Properties of the structural element


This information is grouped separately, since the statement for fronts is not used by CAD Cut (fronts are not subject to cutting).

Statement elements can be added, removed, or edited, such as changing their names, dimensions, or specifying materials. No new content should be added beyond the original text. They can also be edited: change their names, dimensions, add veneer, specify material, and optionally omit them when exporting to a file in a format readable by the CAD Cut program (Illustration 84).

To save the statement to a format recognized by CAD Cut, select the button  "Save the summary to CAD Cut file". This file can be imported into the CAD Cut program and obtain the optimal cutting pattern of the material needed to build the cabinet in question.

4.4. "Database/New Model" tab

This tab allows you to start creating a new cabinet. To do so, you should:

- in the "New cabinets" field, select the type of cabinet,
- to save a new cabinet in the user's database, click the button  "Save cabinet as..." (function also available under the key combination [Ctrl+S]), this will open the "Save the cabinet to the database" window, where you can complete the data (name the cabinet, assign it to the appropriate group, optionally specify the level and assign it to base cabinets, and select default handles) ("Basic data" tab) (Illustration 85).

- in the **"Series of types"** tab (Illustration 86), you assign the cabinet to the appropriate groups in terms of the width in which it is available,

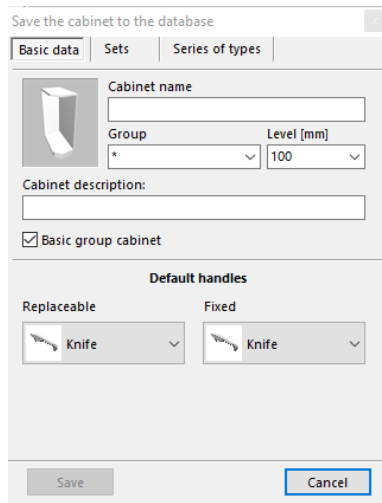


Illustration 85 Data entry

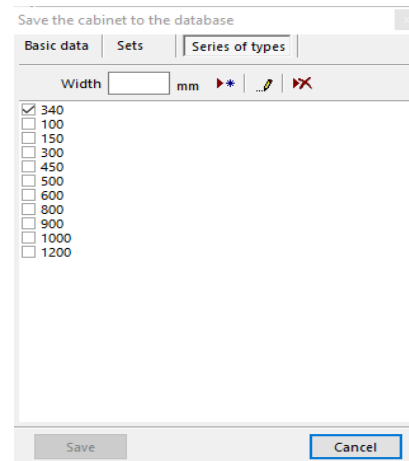


Illustration 86 Determination of type

- in the case of saving to several series, cabinets will be added to the base proportionally stretched (e.g., when selecting widths of 500, 1000 and 1500 for the same model, three cabinets will be added with the same configuration of fronts and other elements, but with different widths),
- in the **"Sets"** tab (Illustration 87), you can assign a given cabinet to specific sets in the database (e.g., with appropriate front ornamentation) and also set the price for the cabinet - the same for all sets or individually, for each set separately (Illustration 88),

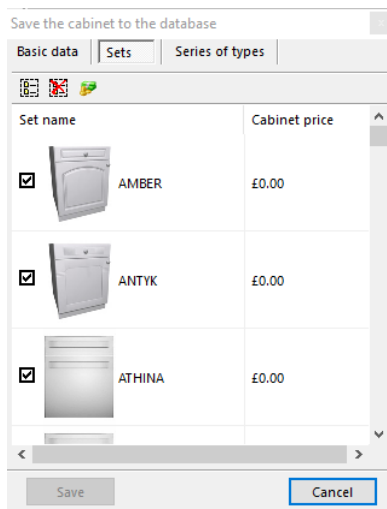


Illustration 87 Assigning cabinets to sets

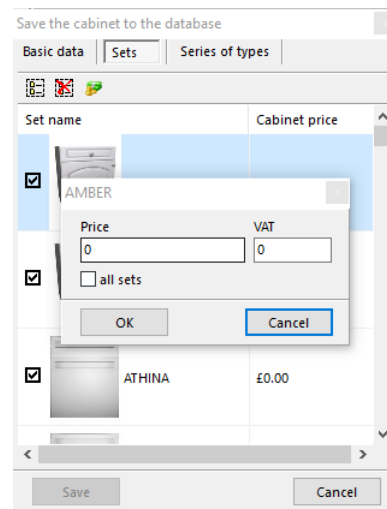


Illustration 88 Determining the price of the cabinet

- when the settings are completed, click **"Save"** to approve them.

Note that each newly created cabinet must be assigned to at least one set; otherwise, it cannot be saved.

Once a cabinet is saved in the database, it can be modified. By double-clicking on a cabinet in the **"Cabinets in the database"** list, the cabinet will be activated, its picture will be displayed in the preview field and it will be possible to edit it and then save changes to it or add a new cabinet, thus created, to the database (options: **"Save changes to the cabinet"** and **"Save cabinet as"**). Cabinets can also be deleted from the database using **"Delete from database..."** button

Delete from database...

4.5. Preview tab

The tab allows you to view the created cabinets with different front carvings depending on the set indicated (Illustration 89).

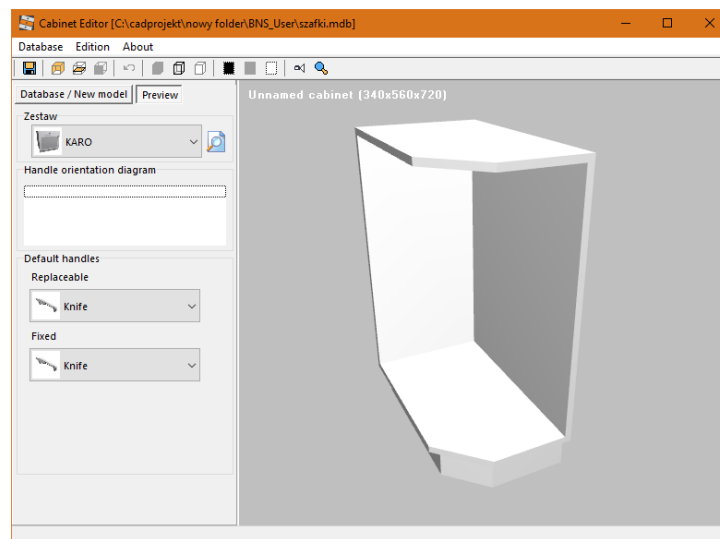






Illustration 89 Set preview

In this tab, it is also possible to change the handle arrangement scheme and to change the default handle to another one from among those available in the database.

4.6. Other features of the "User Cabinet Editor"

-  **"Undo"** - undoes the last operation,
-  **„Shaded model with textures”, "Grid model", "Grid model with shading"**. - determine how the model is displayed (Illustration 91),
-  **"Change background"** - changes the background color to black, gray or white (Illustration 90),
-  **„Set cabinet central view"** - directs the camera to the center point of the model (function also available under the key [F5]).

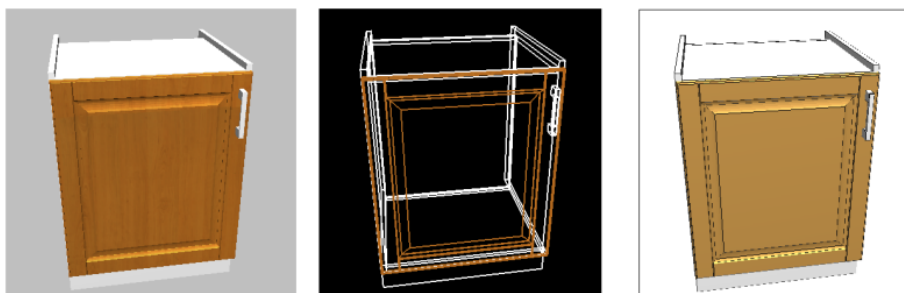


Illustration 90 Different ways to display the model in the "User Cabinet Editor" module

Additional information

1. Instructional videos

- Playlist Kitchen cabinets | countertops | moldings | stucco.
- Creating non-standard cabinets
- Creating custom cabinets with built-in coffee maker and warming drawer
- Opening kitchen cabinets in CAD Kuchnie and CAD Decor PRO programs

2. Shortcuts and commands

The document compares keyboard shortcuts in the .4CAD and visualization environments and lists the most frequently used commands in versions up to 3.Xi/7.X and version 4.X/8.X (both 34 and 64 bit versions of the environment). Find the document at: : <https://www.cadprojekt.com.pl/zasoby/pdf/opisy-techniczne/shortcuts-4-0-8-0-eng.pdf>

This document provides an overview of keyboard shortcuts and commonly used commands in the .4CAD environment for visualization. The shortcuts and commands can be issued using either the mouse or keyboard. It can be accessed at: <https://www.cadprojekt.com.pl/zasoby/pdf/opisy-techniczne/shortcuts-4-0-8-0-64bit-eng.pdf>

In the above list, LPM and RMB stand for left and right mouse buttons, respectively. A command notation with a + sign (e.g. [Ctrl] + [Z]) indicates that both keys should be pressed simultaneously, while a notation with a >> symbol (e.g. [E] >> [Enter] or [Space]) means that you should first type E and then press [Enter] or the space bar.

Technical support

Mon-Fri from 8 a.m. to 5 p.m.

pomoc@cadprojekt.com.pl

tel. +48 61 662 38 83

Contact form

We would like to inform you that we provide training in the use of our programs. For more information, please visit our website: <https://www.en.cadprojekt.com.pl/trainings/>

Training section

szkolenia@cadprojekt.com.pl

tel. +48 505 138 863



CAD PROJEKT K&A

CAD Projekt K&A Sp.J. Dąbrowski, Sterczała, Sławek
ul. Rubież 46 | 61-612 Poznań | tel. +48 61 662 38 83
biuro@cadprojekt.com.pl | www.cadprojekt.com.pl



POWERED BY
IntelliCAD and the IntelliCAD logo are registered trademarks of The IntelliCAD Technology Consortium in the United States and other countries.