



CAD PROJEKT K&A

# installation manual

CAD Decor PRO 4.0, CAD Decor 4.0, CAD Kitchens 8.0



[www.cadprojekt.com.pl](http://www.cadprojekt.com.pl)

## THANK YOU FOR PURCHASING A PROGRAM FROM CAD PROJEKT K&A!

We are glad that you are beginning your adventure with one of our programs! This document will help you get through the installation process quickly and efficiently. We make sure that the installation and use of our software goes smoothly. Should you nevertheless experience any problems, our **Technical Support** is available at the following number: **+48 61 662 38 83** and at the following address e-mail: [pomoc@cadprojekt.com.pl](mailto:pomoc@cadprojekt.com.pl). You can also use the contact **form** available at [www.en.cadprojekt.com.pl](http://www.en.cadprojekt.com.pl) in the **support** section.

## FREE SERVICE PACKAGE

When you purchased the program, we provided **you with a free service package**, active for **12 months**. After this time, you can buy a prolongation. **To activate the package, contact our Technical Support**. The active package guarantees:

- software updates and upgrades via the Internet, including updating the CAD environment,
- access to new databases and their updates,
- technical support via phone or e-mail in terms of: assistance in installation, software service, reporting errors and bugs, as well as having problems resolved remotely by our service technicians after connecting to your computer (note: technical support does not include instructions of how to use the program),

## TRAININGS

We encourage you to participate in our trainings, during which you can learn how to work with our software in the most pleasant and effective way. We offer individual and group trainings, stationary or remote, at various levels of advancement. For more information visit [www.en.cadprojekt.com.pl](http://www.en.cadprojekt.com.pl) and check **offer/pricelist** and **offer/trainings** sections.

**We wish you pleasant and productive work with our software!**  
**CAD Projekt K&A Team**

### **Copyright**

*This document is protected by the intellectual property rights of CAD Projekt K&A. Copying, distribution and / or modification of the following document is allowed under the terms of the license agreement. The license agreement is available in electronic form upon program installation.*

### **Limitation of liability**

*Information in this document, including URL and other Internet Web site references, is subject to change without notice. CAD Projekt K&A reserves the right to introduce changes to the rules of technical support without prior notice. If it is necessary to change telephone numbers, relevant information will be provided on our website [www.cadprojekt.com.pl](http://www.cadprojekt.com.pl).*

# Table of contents

|  |    |
|--|----|
| 1. System and hardware requirements .....          | 4  |
| 1.1. System requirements .....                     | 4  |
| 1.2. Recommended hardware requirements .....       | 4  |
| 1.3. Other requirements and recommendations .....  | 5  |
| 2. Software installation .....                     | 6  |
| 2.1. Introduction to software installation .....   | 6  |
| 2.2. Database server version .....                 | 9  |
| 2.3. The full installation of the program .....    | 9  |
| 2.3.1. Selection of installation elements .....    | 9  |
| 2.3.2. Selection of installation location .....    | 10 |
| 2.3.3. dot4CAD environment version .....           | 11 |
| 2.3.4. Copying system files and databases .....    | 11 |
| 2.3.5. Installation of additional components ..... | 12 |
| 3. Launching the program .....                     | 14 |
| 4. Entering registration codes .....               | 14 |
| 5. Uninstalling the program .....                  | 15 |

## 1. System and hardware requirements

For customers with an active service package, we provide technical support for our software on hardware that complies with the requirements listed below. Older, outdated versions of our software may not function properly on new graphics cards, as well as on other computer components or versions of Windows whose release date precedes the distribution date of your software.

### 1.1. System requirements

System requirements include: Windows 10 or Windows 11 64-bit operating system (our software does not work with Linux or Mac OS), .4CAD software (provided with our programs at no additional charge), and Microsoft Access Database Engine 16.05.5044.1000 x64 database driver (installed automatically with the program).

### 1.2. Recommended hardware requirements

Our software does not function on graphics cards other than NVIDIA GeForce. Below are the recommended hardware requirements. If you have an older-generation graphics card, please verify its performance against the list below. If in doubt, please contact Technical Support (see [contact details](#) at the end of this manual).

- |  |  |
|--|--|
| <b>Hardware requirements for CAD Decor PRO and programs with the Render PRO module</b> | <ul style="list-style-type: none"><li>▪ 3 GHz quad-core processor, 3 MB Cache with support for SSE 4.1 instructions (SSE 4.1 instructions are available for Intel processors released from 2010 and AMD processors released from 2015);</li><li>▪ RAM memory: 16 GB ;</li><li>▪ graphics card (as per the following table):<ul style="list-style-type: none"><li>- NVIDIA GeForce ***** or better (recommended);</li><li>- NVIDIA GeForce ***** (minimal).</li></ul></li></ul> |
| <b>Hardware requirements for programs without Render PRO</b>                           | <ul style="list-style-type: none"><li>▪ 3 GHz dual or more core processor, Cache 3MB</li><li>▪ RAM memory: 8 GB ;</li><li>▪ graphics card NVIDIA GeForce *** or ** (as per the following table).</li></ul>   |

#### NOTE

We inform that older, out-of-date versions of CAD Projekt K&A's software may not work properly on new off-the-shelf NVIDIA GeForce cards, as well as on other new computer components whose release date precedes the distribution date of your software.

#### NOTE

For Windows 8/8.1, 10 and 11 operating systems, do not install programs in the folders:  
C:\Program Files or C:\Program Files x 86

**Exemplary recommended cards for desktop computers**

- \*\*\*\*\* NVIDIA GeForce GTX/RTX 2070 super, 2080, 1080 Ti, 2080 super, 2080 Ti, 3060 Ti, 3070, 3070 Ti, 3080, 3080 Ti, 3090, RTX 4070 Ti, 3090 Ti, 4080, 4090
- \*\*\*\*\* NVIDIA GeForce GTX/RTX 1660 Ti, 3050, 1070, 1070 Ti, 2060, 1080, 2060 super, 3060, 2070
- \*\*\*\* NVIDIA GeForce GTX 1050 Ti 4 GB, 1650, 1060 3 GB, 1650 SUPER, 1060 6 GB, 1660
- \*\*\* NVIDIA GeForce GTX 1050
- \*\* NVIDIA GeForce GTX 1030
- \* ---

**Exemplary recommended cards for laptops**

- \*\*\*\*\* NVIDIA GeForce GTX/RTX 2080, 3070, 3070 Ti, 3080, RTX 4070, 3080 Ti, RTX 4080, RTX 4090
- \*\*\*\*\* NVIDIA GeForce GTX/RTX 1660 Ti, 1070 Max-Q, 2060, 1070, 2070 Max-Q, 1080 Max-Q, 2070, 2080 Max-Q, 1080, 3060
- \*\*\*\* NVIDIA GeForce GTX/RTX 1050 Ti, 1650 Max-Q, 1650, 1060, 2060 Max-Q, 3050, 1660 Ti Max-Q, 3050 Ti
- \*\*\* NVIDIA GeForce GTX 1050
- \*\* NVIDIA GeForce GTX MX150
- \* NVIDIA GeForce GT MX130

### 1.3. Other requirements and recommendations

Adequate hard disk space should be provided (amount estimated, depends on program selected and number of databases installed) and at least periodic access to the Internet to perform software updates.

**NOTE**

To ensure the correct operation of our software, designs should be properly optimized. The models used have the greatest impact on the rendering speed and the correct operation of the program.

## 2. Software installation

Before installing the program on Windows 10 or Windows 11 make sure you have administrator rights. In the following subsections, we describe how to prepare for the software installation process and how all the steps of the process work.

### 2.1. Introduction to software installation

Before starting the installation, it is recommended to close all applications running on the computer. The installation begins by inserting the installation flash drive (Fig. 1) into the USB port of the computer. A window should open on the screen with the contents of the flash drive (Fig. 1) If this has not happened, you must open it yourself through 'This computer'. The program installer does not start automatically. To run it, double-click the Setup / Setup.exe icon (Fig. 2).



Fig. 1 - Installation flash drive

After running the **Setup.exe** file, the *Installation Wizard* window opens (Fig. 3). Once you have familiarized yourself with the information shown in the window, click on the '**Next**' button to proceed to the next installation stage. To terminate the installer at this stage, select the '**Cancel**' button in the bottom left corner of the window.

#### NOTE

Before starting the installation, **do not plug in** the HASP security dongle, due to the installation of its drivers at the beginning of the installation process. The program will prompt you to plug it in at the appropriate time.

The installation can be discontinued at any time, but please note that the installed program will not work properly in this case. After selecting the '**Cancel**' button, the user will be asked to confirm the termination of the installation (Fig. 4).

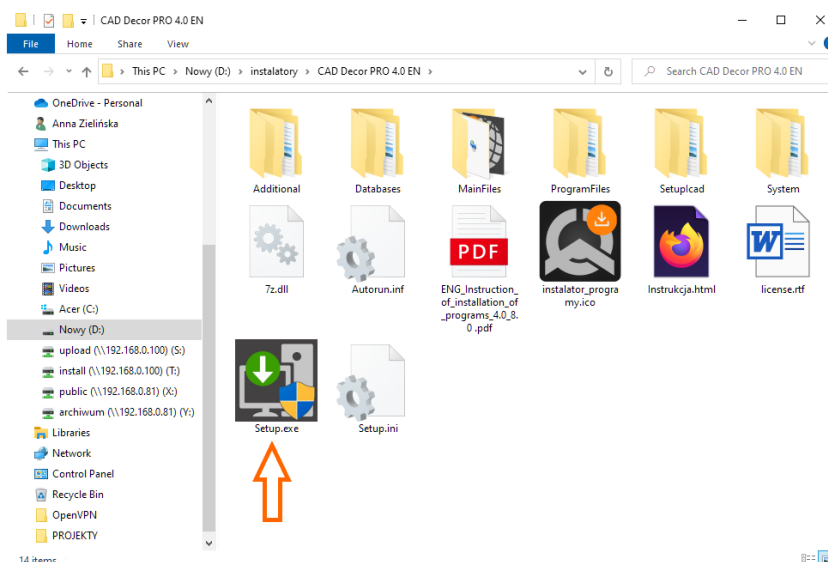


Fig. 2 - window with the contents of the installation pendrive, which opens after inserting it

After clicking the 'Next' button, the Wizard will automatically initiate the installation of HASP drivers (Fig. 5). This may take a few seconds, after which the program will proceed to the next installation step. You should **now plug the HASP key** into the computer's USB port.

#### NOTE

In the new version of the installation wizard, the registration code for CAD Decor PRO, CAD Decor or CAD Kitchens must be entered. You will be able to enter the codes for additional modules in the program after the installation is completed.

If the installer detects the installed HASP key drivers, it will display a message that the key needs to be plugged in to proceed to the next installation step.

A message will appear in the window informing you about the need to enter activation codes for your software (Fig. 6). The code for CAD Decor PRO, CAD Decor or CAD Kitchens must be entered. The codes for additional modules and CAD Cut can be entered after installation and start of the software. Based on the code provided, the Wizard will identify which program the user owns and adjust the messages in the subsequent installation steps accordingly. After entering a valid registration code, the wizard will display a confirmation message and the 'Next' button in the bottom right corner will become active (Fig. 7).

#### NOTE

If you have more than one program from CAD Projekt K&A, make sure to provide codes for the appropriate program.

For example, after extending CAD Kitchens to CAD Decor PRO, you need to specify the codes you received for CAD Decor PRO during installation.

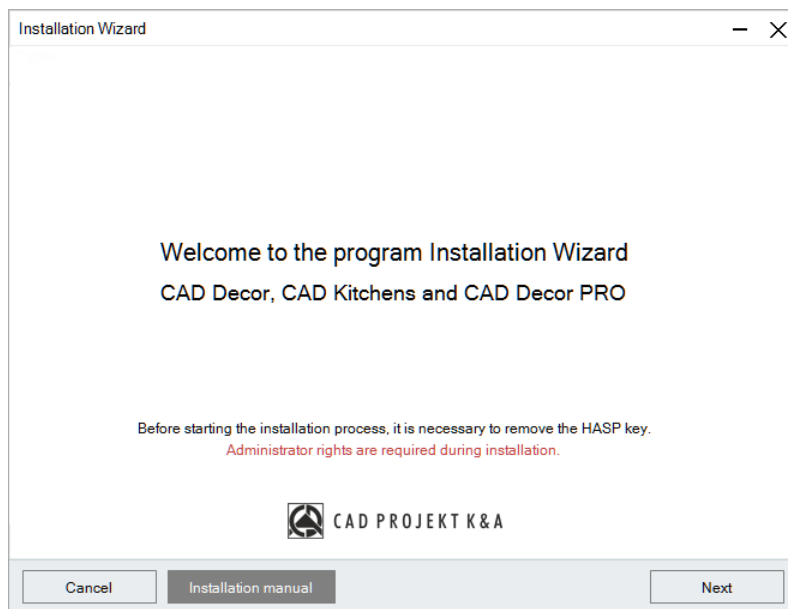


Fig. 3 - Welcome screen of the Installation Wizard

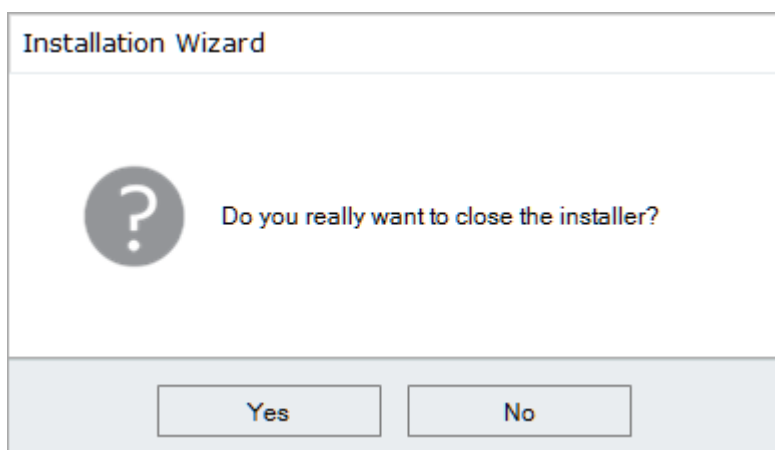


Fig. 4 - Confirmation of installation discontinuation

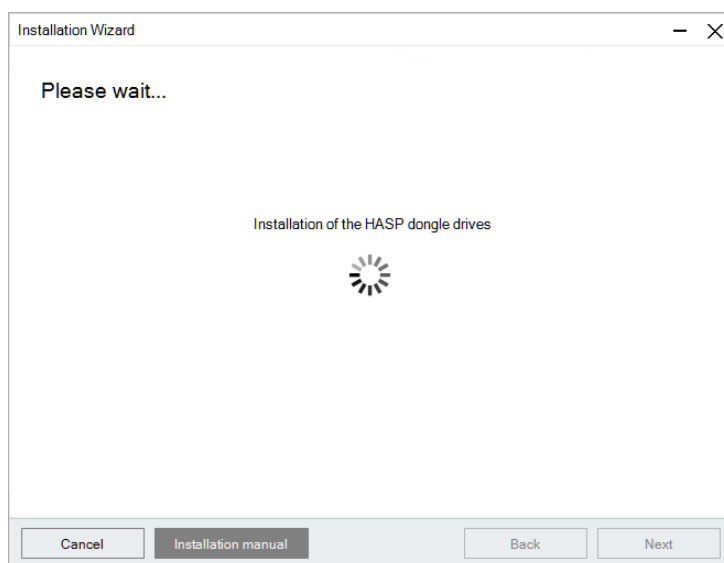



Fig. 5 - Installation of HASP drivers

When you go to the next step, the Wizard will display the contents of the license agreement in the window (Fig. 8). In order to be able to proceed with the installation, once you have read the agreement, you must accept it in the bottom left corner and click 'Next'. The agreement can be printed by clicking on the  'Print license agreement' in the bottom-right corner of the window. If the user does not agree with the terms and conditions, they can terminate the installation by clicking 'Cancel'.

After accepting the content of the agreement and clicking 'Next', in the next window you should choose the type of installation (Fig. 9):

- **'Full program installation'** - invokes the procedure for a standard full program installation.
- **'Installation of selected databases'** – allows databases to be added to an existing program; this option is not available during initial installation; once selected, the program will calculate the size of the databases available for installation in order to check whether it exceeds the amount of free disk space (the required amount is approximately 14 GB; the exact amount depends on the number and size of databases to be installed).
- **'User manual for the program in PDF format'**– installs the program manual in the electronic version.

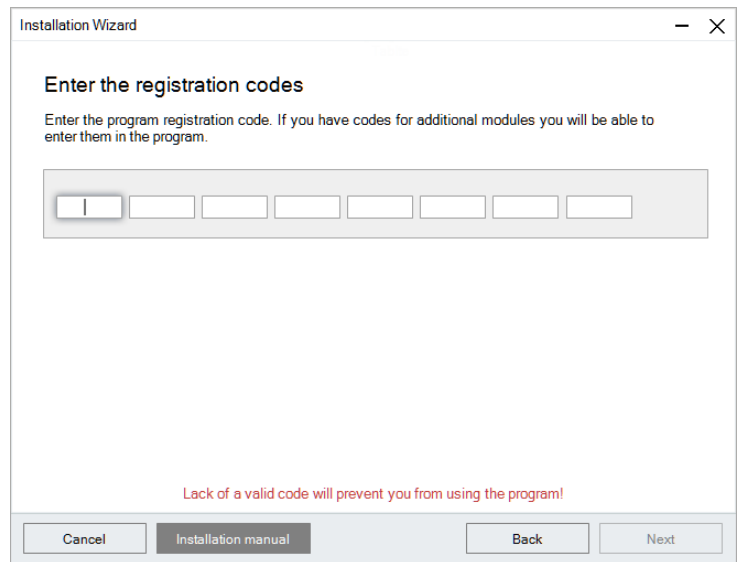


Fig. 6 - Screen with request for program codes

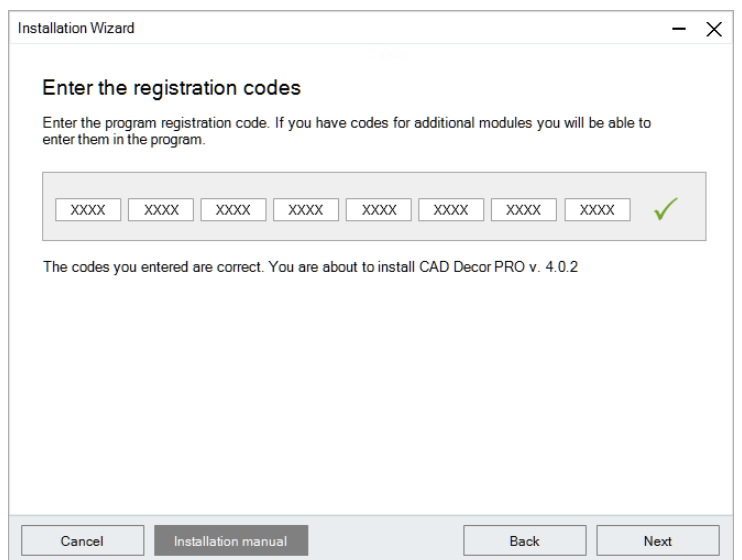


Fig. 7 - Entering a valid registration code



Fig. 8 - Read the license agreement



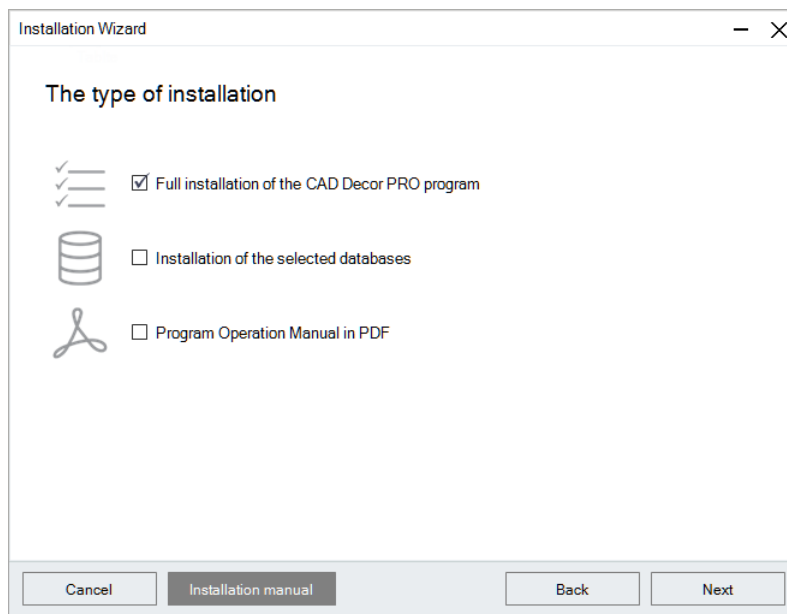


Fig. 9 - Choose the type of installation

## 2.2. Database server version

The next step is to install the Firebird database server. If this is the first installation on your computer, the process will run automatically.

If an Inter Base or Firebird server version older than 2.5.9 32 bits is installed on the computer, which was installed by another program owned by the user, after selecting the type of installation and clicking '**Next**', the program will inform about it and offer a solution: uninstall the unsuitable server version. In this case, you should **contact technical support**. Uninstalling the database server on your own carries the danger of malfunctioning other programs on your computer.

## 2.3. The full installation of the program

Full installation includes: selecting the elements to be installed, recognizing, and possibly installing the appropriate version of the .4CAD environment, copying and registering system files (program components and standard databases), installation of selected databases (tiles, interior furnishings and materials), installation of additional components: MDAC environment, Firebird database server and Visual C++ Redistributable (VC Redist) packages.

### 2.3.1. Selection of installation elements

After starting the full installation of your software and click on '**Next**', you can select the databases to be installed, using which projects will be created. The list shows the categories of databases available on the installation pendrive (Fig. 10). Here, you can also select the instruction manual in the PDF file in the Other installation items category.

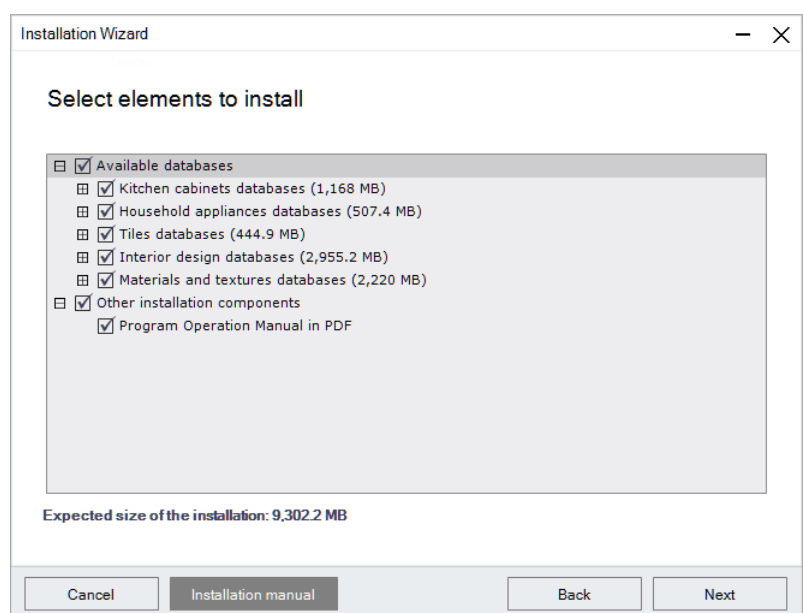
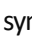
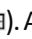


Fig. 10 - Selection of installation components

To expand the list of available databases, click on the symbol  next to a particular category. To collapse the list, click in the same place (the symbol will change its look: ). All items are checked by default. To opt one out, deselect it. You can select and deselect items in groups by left clicking on superior categories.

### 2.3.2. Selection of installation location

The next step is to choose a location on the computer's disk where the program files are to be saved, that is to indicate the path for the installation (Fig. 11). After clicking the **'Browse'** button, the **'Browse for folder'** window will appear (Fig. 12) where you can select the save location. If the user does not manually indicate the installation location, the program will install by default on the C drive, in the CAD Projekt directory, in a subfolder with the program name (Fig. 11).

If the program you are currently installing has been installed before, the program will install itself by default at the location of the previous installation. If the installation destination already contains program files (e.g. from a previous installation), the installer will inform you of this fact and ask if you want to install it again in the same directory, overwriting its contents (Fig. 13).

#### NOTE

As a reminder, **do not install** the program in the locations C:\Program Files or C:\Program Files (x86).

After selecting the **'Yes'** button, the files in the indicated directory will be overwritten, i.e. the program version installed there will be replaced with the currently installed one. After selecting **'No'**, the installer will return to the path selection window, giving the possibility to select a different location (it is recommended, as overwriting files may cause problems with the functioning of the program; however, if the user decides to overwrite the contents of the indicated installation directory, make sure that the currently installed version is newer than the one already installed). A similar message will appear if there are any files in the indicated location, which are not, however, files from an earlier version of the installed software. To indicate a different installation directory, select the **'No'** option.

If user databases (tiles, interior furnishings, kitchen cabinets or tile layouts) are detected in the indicated location, the **'Files from previous installations'** window will appear (Fig. 14), where you can decide whether these databases should be left in their current shape or whether new databases are to be installed from the installation pendrive, not containing any elements (if there are no user databases in the indicated installation location, this step will be skipped).

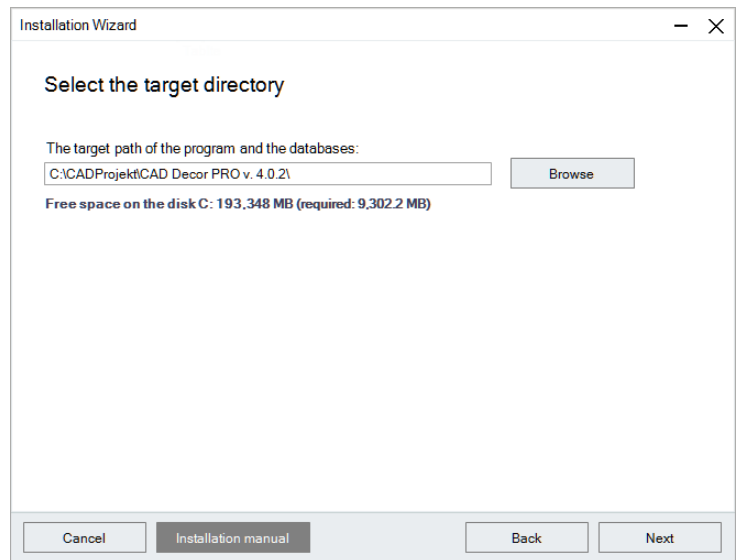


Fig. 11 - Selection of installation location

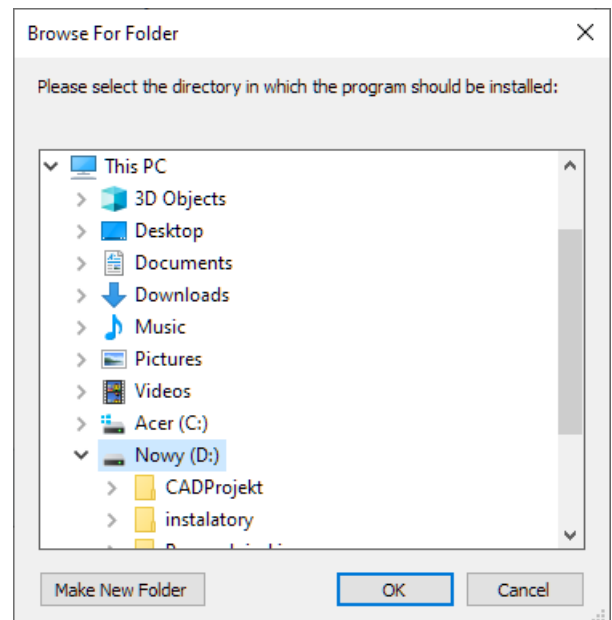


Fig. 12 - Browse for folder

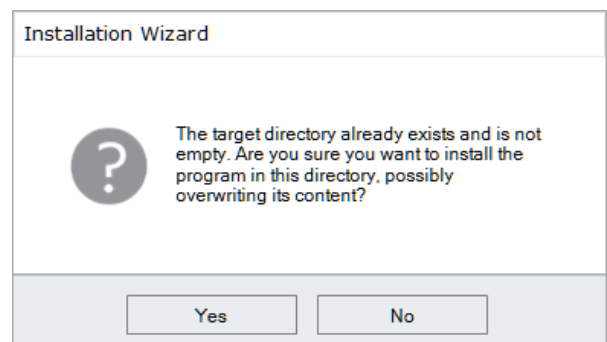


Fig. 13 - Destination directory is not empty

Two options are available:

- **‘Leave existing databases’** – selecting this option causes that the user's database remains intact in the target location, which will protect them against losing the content that has been saved in them so far (i.e., self-added tiles, interior design models, kitchen cabinets or created layouts).
- **‘Install new, empty databases’** – new user databases will be installed from the installation pendrive that do not contain any elements that will replace the existing databases (their content will be lost).

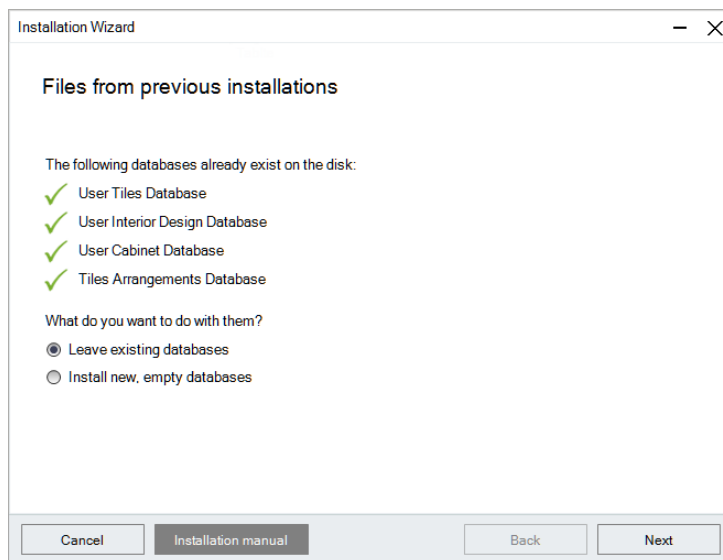


Fig. 14 - Files from previous installations

### 2.3.3. dot4CAD environment version

After completing the installation of user databases, the installer will search the computer's disks in search of our software working environment, called the dot4CAD (.4CAD program), our proprietary version of the IntelliCAD platform (Fig. 15). This environment is necessary for the installation and operation of our software.

If the environment is not found then its installation will start automatically from the installation flash drive. In a situation where an earlier version of the environment is already installed on the computer, the program installer will inform you about it and display the available versions. If, at this point, the user decides to install the new version from the installation flash drive, he or she should check the **‘Install a new version of IntelliCAD environment’** option in the checkbox.

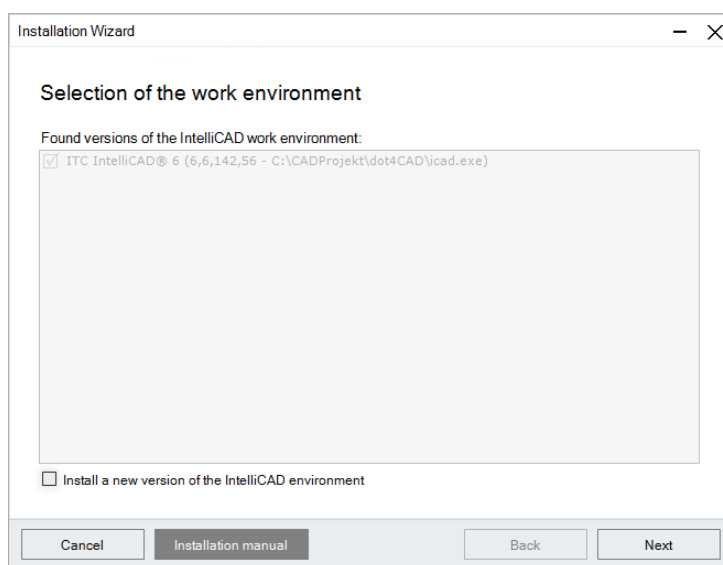


Fig. 15 - Selection of working environment

Installation of dot4CAD environment is automated and takes a few tens of seconds. While the installer is running, installation progress messages appear (Fig. 16)

If the dot4CAD environment found is the latest version, the installer will go straight to the next installation steps.

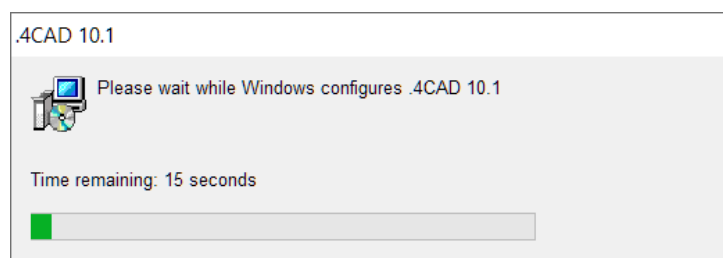


Fig. 16 - Automatic installation of dot4CAD environment

### 2.3.4. Copying system files and databases

If the dot4CAD environment does not have to be installed, then after selecting the elements for installation, system files will be copied and registered: program components, e.g., EXE, INI, DLL files, databases, e.g., JPG, DWX, DWG files, PAL, user manual in PDF file. In this step, the installer will upload the previously selected databases of producers of kitchen furniture, household appliances, interior design elements, tiles and materials. On the next screens, the user is informed how much free disk space is left and which database is currently being installed. You can also follow the installation progress on the bar at the bottom of the window (Fig. 17).

The installation of databases is automated. However, if the program has been installed on a given computer before and the installer detects a database on the disk with the same name as the database currently being installed, user action will be required.

Possible solutions in such case are (Fig. 18):

- **‘Install a new database and save the existing one under a new name’** – the newer version of the database will be installed, but will not replace the previous one; the older version will be renamed automatically; this will allow the simultaneous use of both versions of the database in the program in the case of interior (accessories) and kitchen (cabinets) databases, and will also create backups in the case of tile databases (note: the older version of the tile database will not be available for use in the program at the same time as the new one).
- **‘Install a new database, overwriting the existing one’** – the older version will be replaced with the new, currently installed version of the database.
- **‘Do not install a new database’** – the installation of the new version is skipped; the older version of the database will remain unchanged on the disk.

If the same solution is to be applied to all databases, you can select the **‘Apply to all remaining new databases’** option. The installer will then stop asking questions every time it detects an older version of the database but will apply the selected command to all subsequent databases.

### 2.3.5. Installation of additional components

After completing the copying of system files and databases, the **‘Installation of additional components’** screen will appear, showing the completed, currently running, and pending installation steps (Fig. 19). At this stage, the MDAC environment, Firebird database server and Visual C++ Redistributable (VC Redist) packages are uploaded and the License Manager is installed. During the installation of additional components, the installer will **display a warning about a possible automatic reboot** of the computer that may occur while this process is in progress (Fig. 20).

If you agree to continue, the VC Redist packages are installed, which may result in the computer shutting down and restarting by itself. It will happen without another warning, so make sure all files and applications are closed

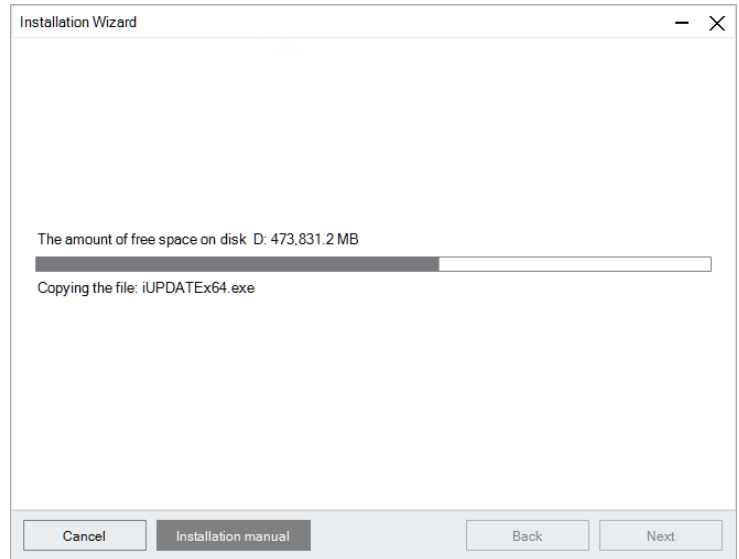


Fig. 17 - Installation progress

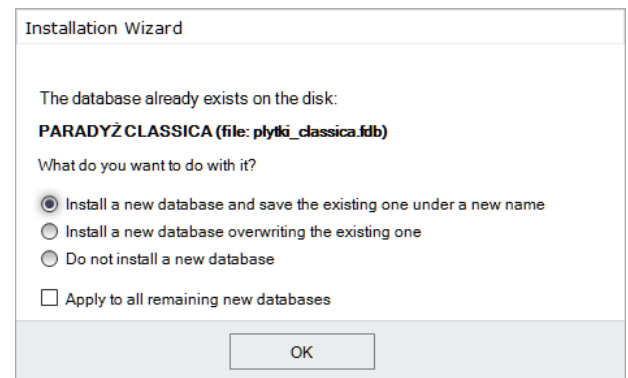


Fig. 18 - What to do with the installed base

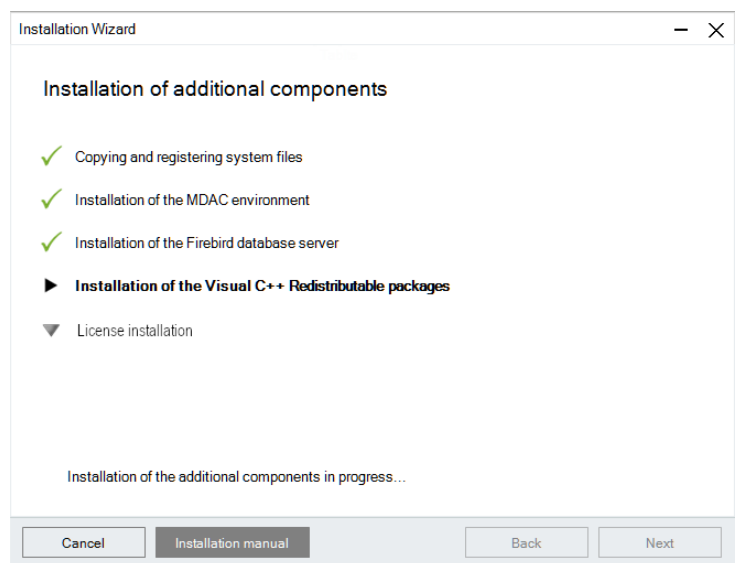


Fig. 19 - Installation of additional components

before beginning the installation of the VC Redist packages. After restarting the computer, you can start working with the installed program. If the computer does not restart automatically, immediately after the installation of Visual C++ Redistributable packages and installing the License Manager, you will see a message board indicating that the installation is complete (Fig. 21).

You can follow the steps of component installation on the list. Item marked with ► is an operation currently in progress, ▼ means that the operation is pending and ✓ that operation is completed.

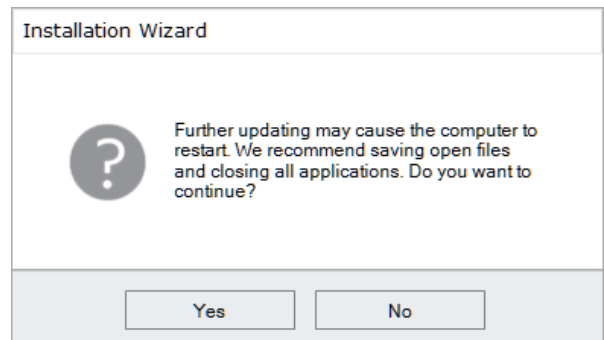


Fig. 20 - Warning of a possible restart

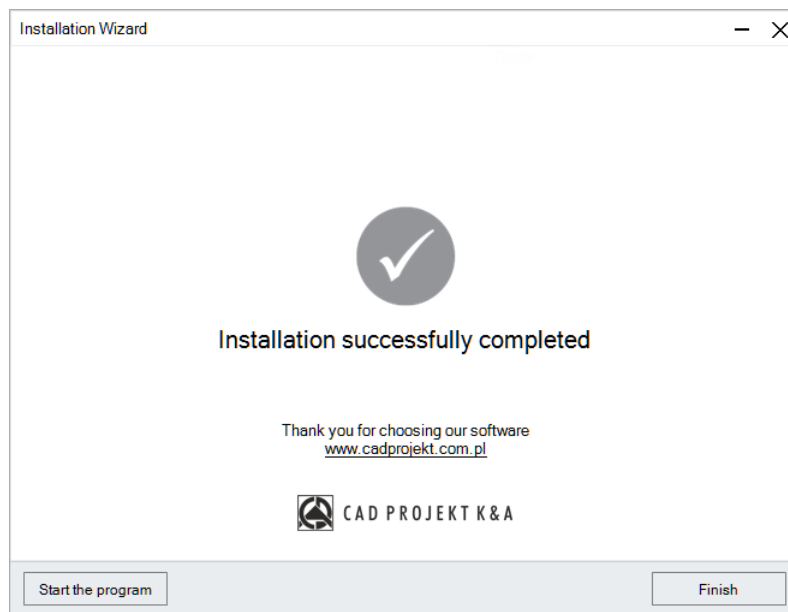


Fig. 21 - Information on completion of installation

If the installation of a component fails (e.g. the user does not agree to the installation of VC Redist packages), a cross will appear next to the item ✗, and a message will appear at the bottom of the window, suggesting reinstallation (Fig. 22).

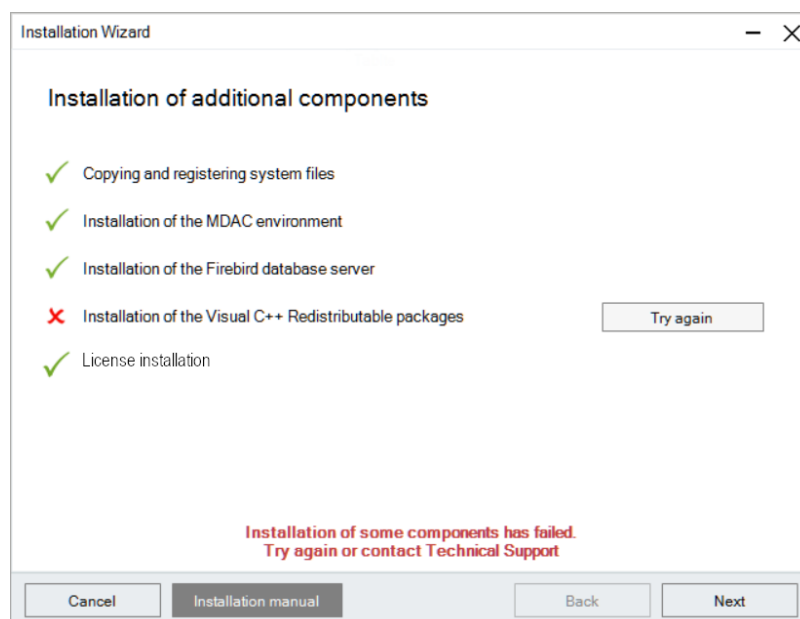


Fig. 22 - Installation of some components has failed

If the component is still not installed correctly after the second attempt, please contact Technical Support ([contact details](#) at the end of the manual).

#### NOTE

For software with a Render PRO Module, when the user does not agree to the installation of VC Redistributable packages, it will be possible to run the installed program, but the **hum reduction function** for the Path tracing algorithm in the Render PRO module will remain inactive until the packages are installed.

Regardless of whether all the components have been installed correctly or not, after clicking the 'Next' button, the information about the completion of the installation will appear.

### 3. Launching the program

In order to start the program, you must insert the HASP key in the USB port of the computer. Otherwise, a message about its absence will appear (Fig. 23), and the program will not start. If the LED of the USB key, which indicates its correct operation, does not light up, change the key to another port or replace it with another USB device. If these steps do not help, check that the USB manufacturer's drivers are properly installed. You can start the program by selecting the program icon from the Start menu, double-clicking the shortcut icon on the desktop or by running the .exe file in the **V4\_I10x64** subfolder in the program installation location.

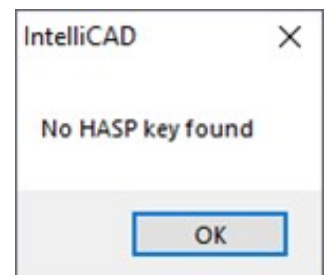


Fig. 23 - Missing HASP key message

### 4. Entering registration codes

When you start the installed program for the first time,, a window will open informing you that you need to enter the codes for the program and any additional modules (Fig. 24).

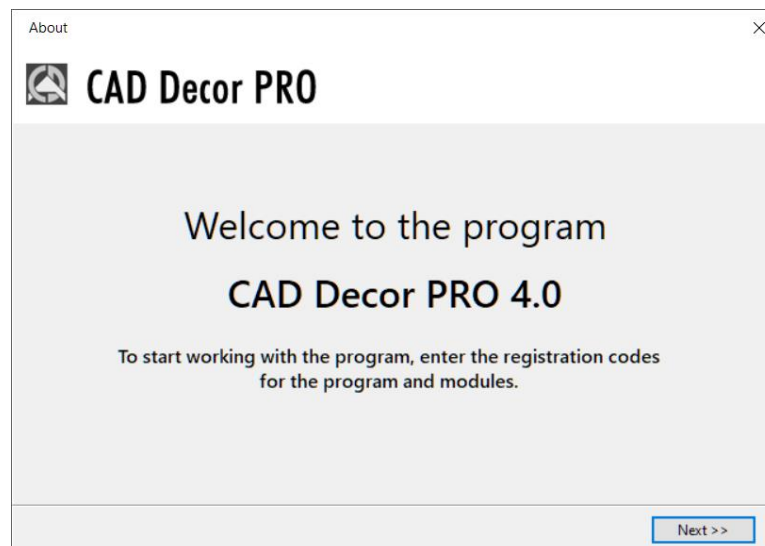


Fig. 24 - Welcome screen when starting the program for the first time

Click 'Next>' and in the next window (Fig. 25) enter the codes from the Registration Card that you received when you purchased the software. To enter the code for the Wardrobe Module, expand the panel with its name using the arrow ▼. If the code is entered incorrectly, a red cross will appear: ✖, however, if the code is entered correctly, a green 'tick' will be displayed: ✔. After confirming it with the 'Ok' button, you can start working with the program. If the activation codes are not provided or are incorrect, the program will shut down.

**NOTE**

It is not necessary to enter the codes for additional modules when the program is started for the first time – you can provide them later.

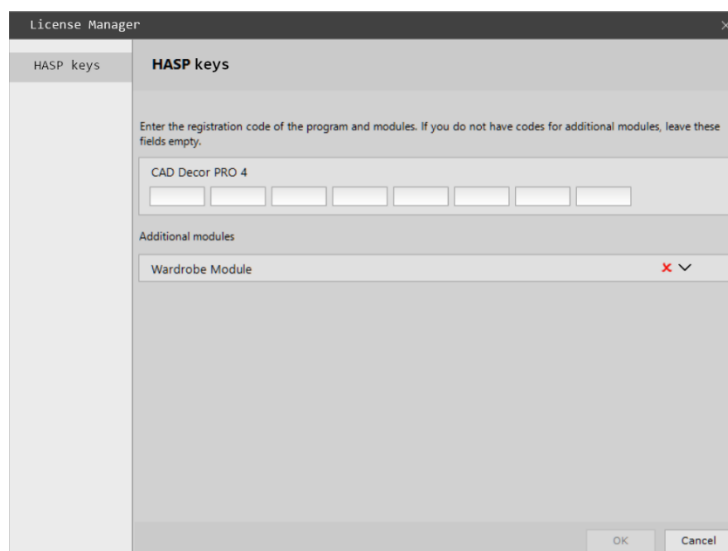


Fig. 25 - Window for filling in the program registration codes

**NOTE**

The registration code for the CAD Cut program is entered separately when the program is launched for the first time. An **'Encoding'** window will open, in which you should type the code from the Registration Card and click **'Ok.'** Immediately after confirming the correct code, you can start working with the CAD Cut program.

## 5. Uninstalling the program

If you need to uninstall CAD Decor PRO, CAD Decor or CAD Kitchens go to the Control Panel and select **'Uninstall a program'** option (Fig. 26). Then, in the newly opened **'Programs and Features'** window, select the desired program and click the **'Uninstall/Change'** button at the top of the window (Fig. 27).

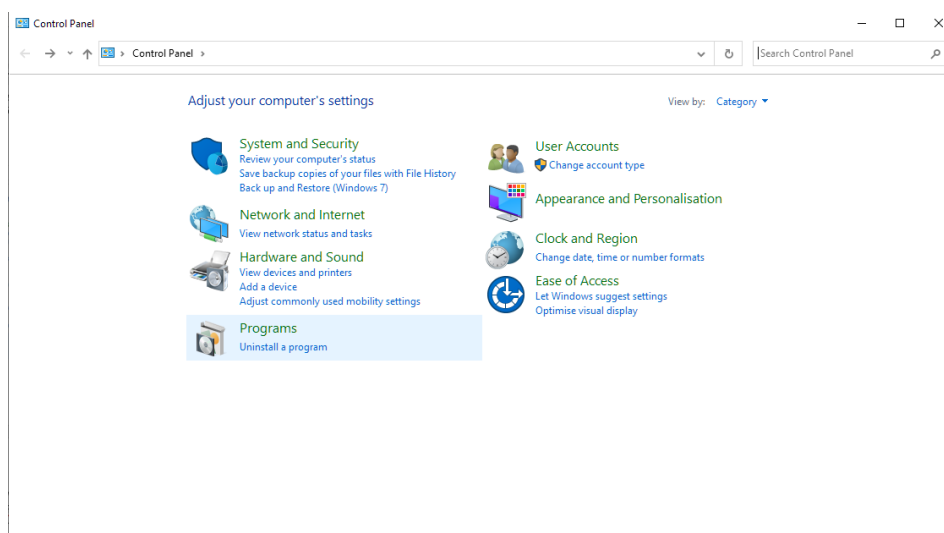


Fig. 26 - Selecting the 'Uninstall a program' option in Windows Control Panel

You will be asked to confirm that you want to uninstall the program (Fig. 28). After approval, program will be uninstalled. You can follow the process on the progress bar (Fig. 29). After successful uninstallation, a message will be displayed confirming that the program has been uninstalled from your computer (Fig. 30).

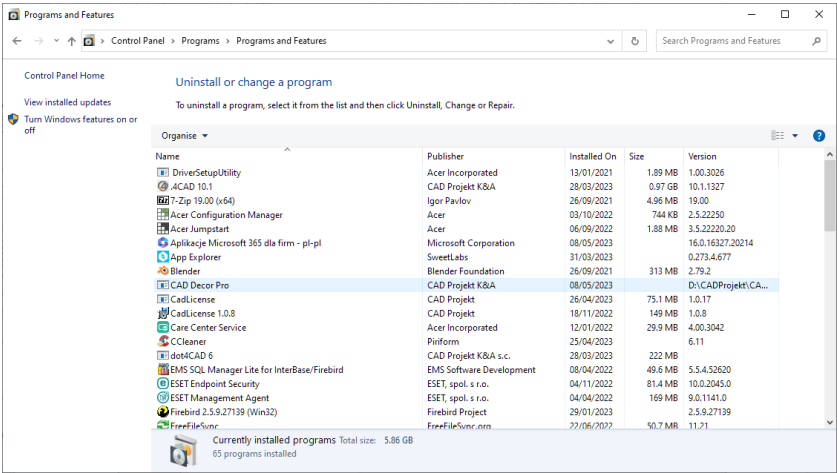


Fig. 27 - Indication of CAD Decor PRO to be uninstalled

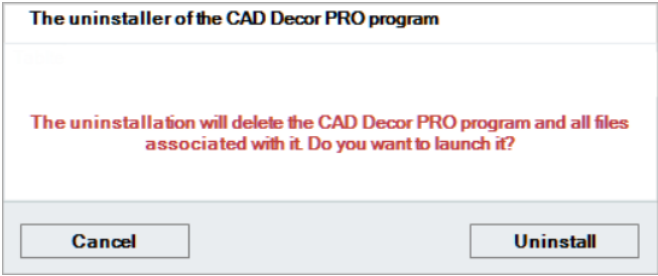


Fig. 28 - Request for confirmation of the uninstallation of the program

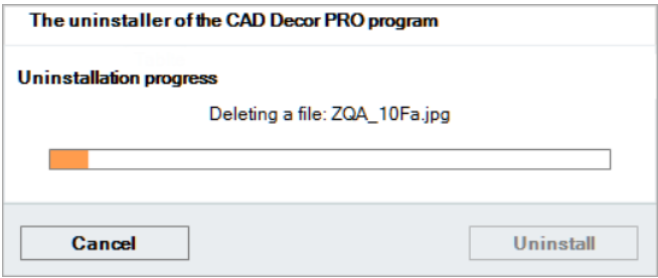


Fig. 29 - Process for uninstalling CAD Decor PRO

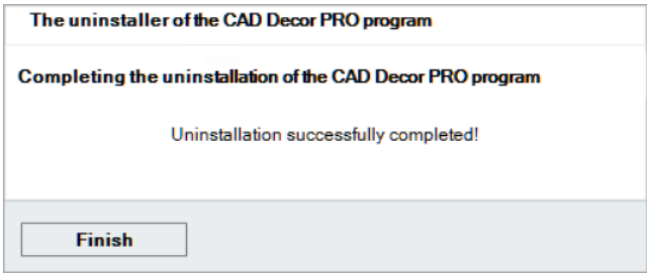


Fig. 30 - CAD Decor PRO has been uninstalled



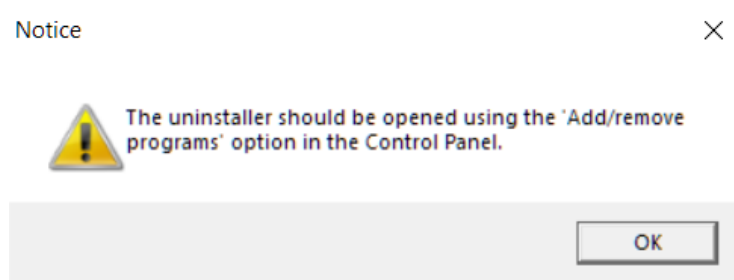


Fig. 31 - Start the uninstallation from the Control Panel

**NOTE**

Do not uninstall the program by running the uninstall.exe file in the program directory. In such a case, the user will be informed about the necessity to invoke the uninstallation process from the level of the Windows Control Panel (Fig. 31)

Tel. + 48 61 662 38 83



**TECHNICAL SUPPORT**

**Any questions or concerns?**

Contact our technical support

e-mail: [pomoc@cadprojekt.com.pl](mailto:pomoc@cadprojekt.com.pl)

or [www.cadprojekt.com.pl](http://www.cadprojekt.com.pl)



**CAD PROJEKT K&A**

CAD Projekt K&A Sp.J. Dąbrowski, Sterczała, Sławek  
ul. Rubież 46 | 61-612 Poznań | tel. +48 61 662 38 83  
[biuro@cadprojekt.com.pl](mailto:biuro@cadprojekt.com.pl) | [www.cadprojekt.com.pl](http://www.cadprojekt.com.pl)



IntelliCAD and the IntelliCAD logo are registered trademarks  
of The IntelliCAD Technology Consortium in the United States  
and other countries.